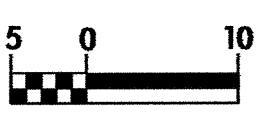
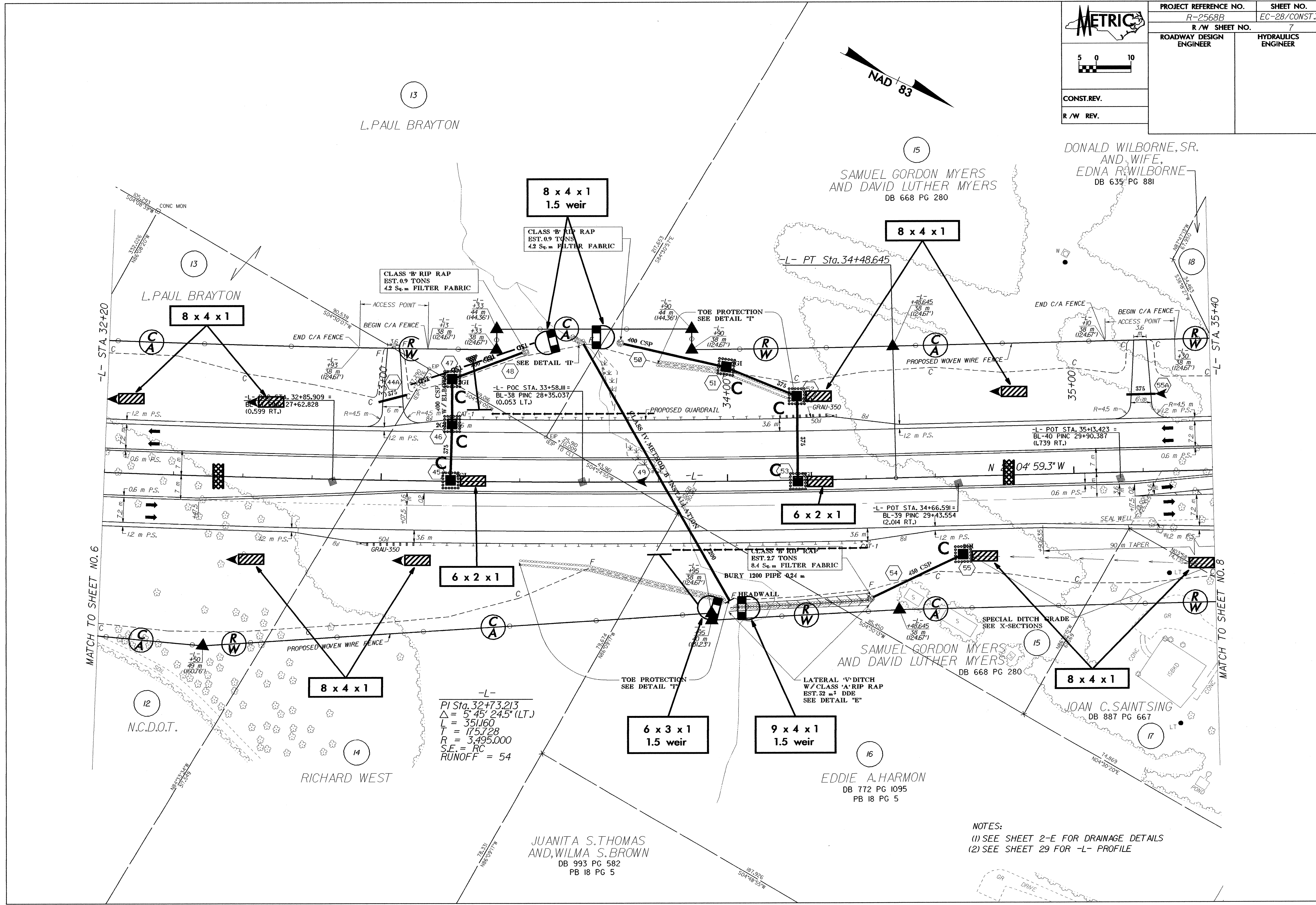
	PROJECT REFERENCE NO.	SHEET NO.
	R-2568B	EC-28/CONST.7
	R/W SHEET NO.	7
	ROADWAY DESIGN ENGINEER	HYDRAULICS ENGINEER
CONST. REV.		
R/W REV.		



-L-
 PI Sta. 32+73.213
 $\Delta = 5^{\circ} 45' 24.5''$ (LT.)
 $L = 351.160$
 $T = 175.728$
 $R = 3,495.000$
 $S.E. = RC$
 $RUNOFF = 54$

NOTES:
 (1) SEE SHEET 2-E FOR DRAINAGE DETAILS
 (2) SEE SHEET 29 FOR -L- PROFILE