

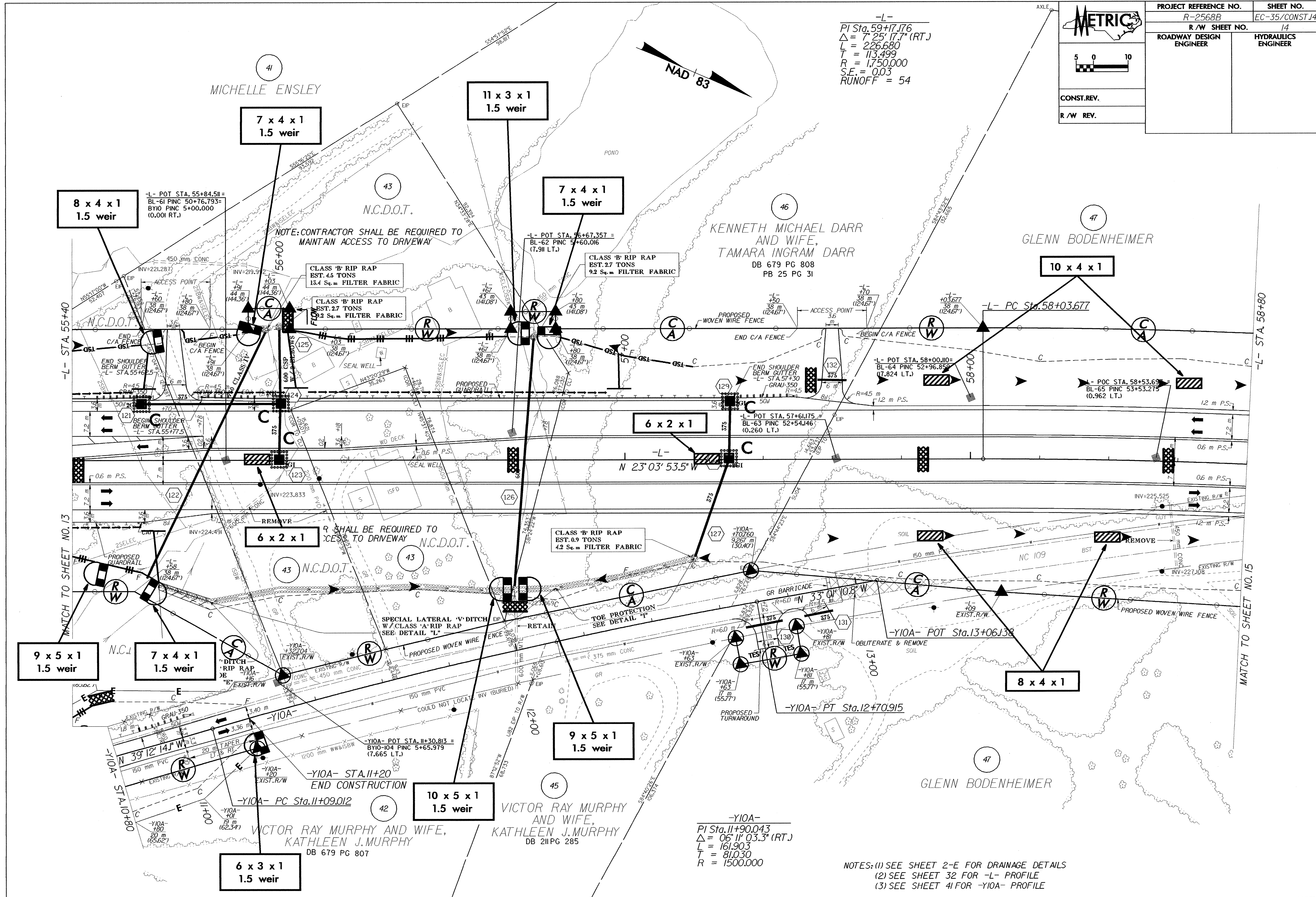
5 0 10

CONST. REV.

R/W REV.

PROJECT REFERENCE NO.	SHEET NO.
R-2568B	EC-35/CONST.14
R/W SHEET NO.	14
ROADWAY DESIGN ENGINEER	HYDRAULICS ENGINEER

-L-
 PI Sta. 59+17.176
 $\Delta = 7' 25" 17.7" (RT.)$
 $L = 226.680$
 $T = 113.499$
 $R = 1,750.000$
 $S.E. = 0.03$
 RUNOFF = 54



-Y10A-
 PI Sta. 11+90.043
 $\Delta = 06' 11" 03.3" (RT.)$
 $L = 161.903$
 $T = 81.030$
 $R = 1500.000$

NOTES: (1) SEE SHEET 2-E FOR DRAINAGE DETAILS
 (2) SEE SHEET 32 FOR -L- PROFILE
 (3) SEE SHEET 41 FOR -Y10A- PROFILE