

METRIC

5 0 10

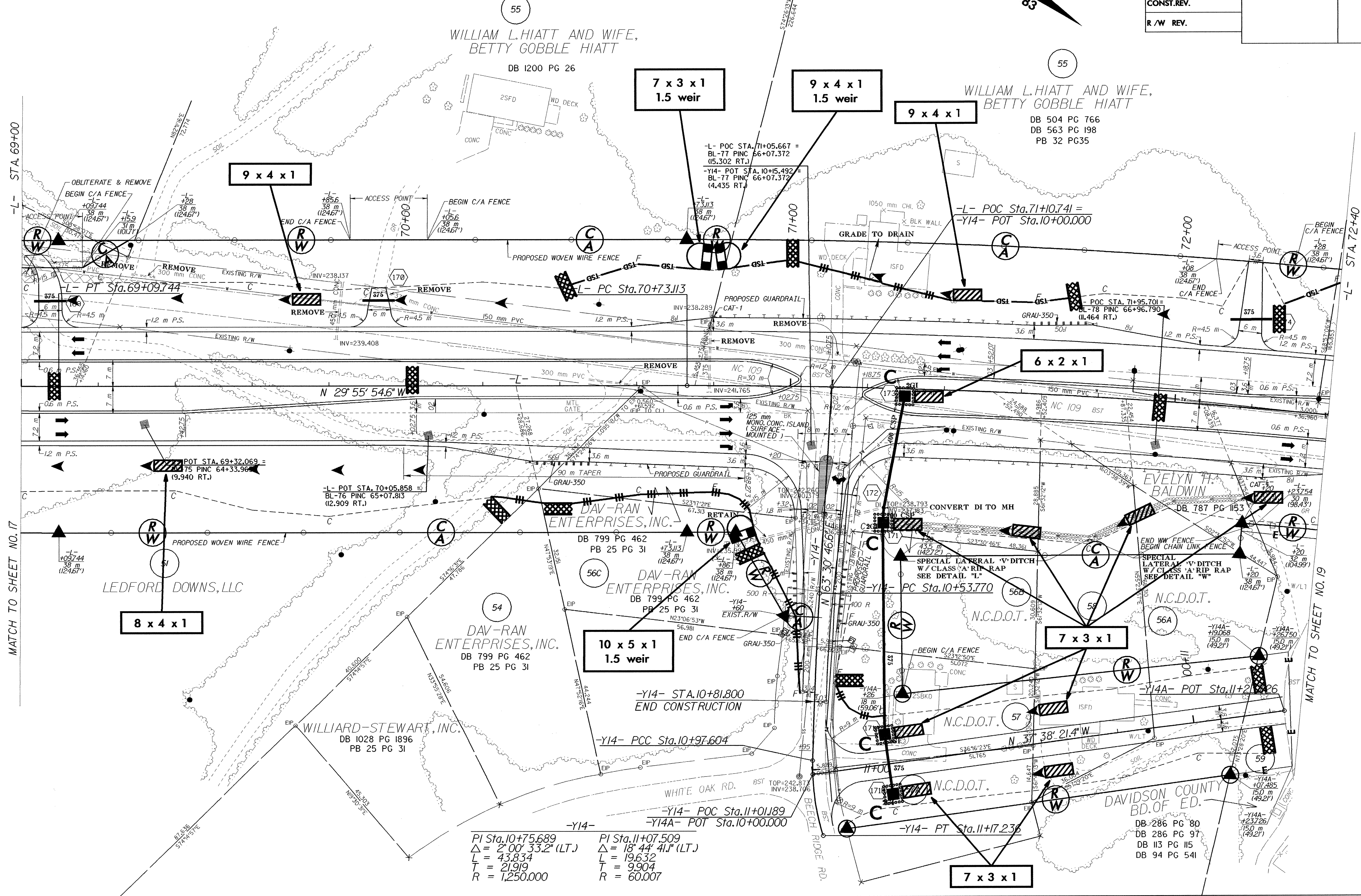
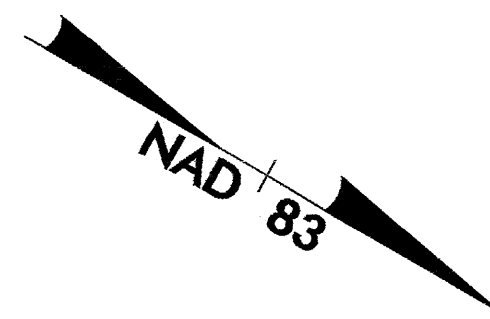
CONST. REV.

R/W REV.

PROJECT REFERENCE NO.	SHEET NO.
R-2568B	EC-39/CONST. JB
R/W SHEET NO.	18
ROADWAY DESIGN ENGINEER	HYDRAULICS ENGINEER

-L-

PI Sta. 68+05.000	PI Sta. 71+65.41
$\Delta = 6' 52" 01.1" (LT.)$	$\Delta = 6' 0" 13.8" (RT.)$
L = 209.740	L = 183.885
T = 104.996	T = 92.027
R = 1,750,000	R = 1,750,000
S.E. = 0.03	S.E. = 0.03
RUNOFF = 54	RUNOFF = 54



-L- STA. 69+00

MATCH TO SHEET NO. 17

MATCH TO SHEET NO. 19

-Y14-

PI Sta. 10+75.689	PI Sta. 11+07.509
$\Delta = 2' 00" 33.2" (LT.)$	$\Delta = 18' 44" 41.1" (LT.)$
L = 43.834	L = 19.632
T = 21.919	T = 9.904
R = 1,250,000	R = 60,007

DAVIDSON COUNTY
BD. OF ED.
DB 286 PG 80
DB 286 PG 97
DB 113 PG 115
DB 94 PG 541