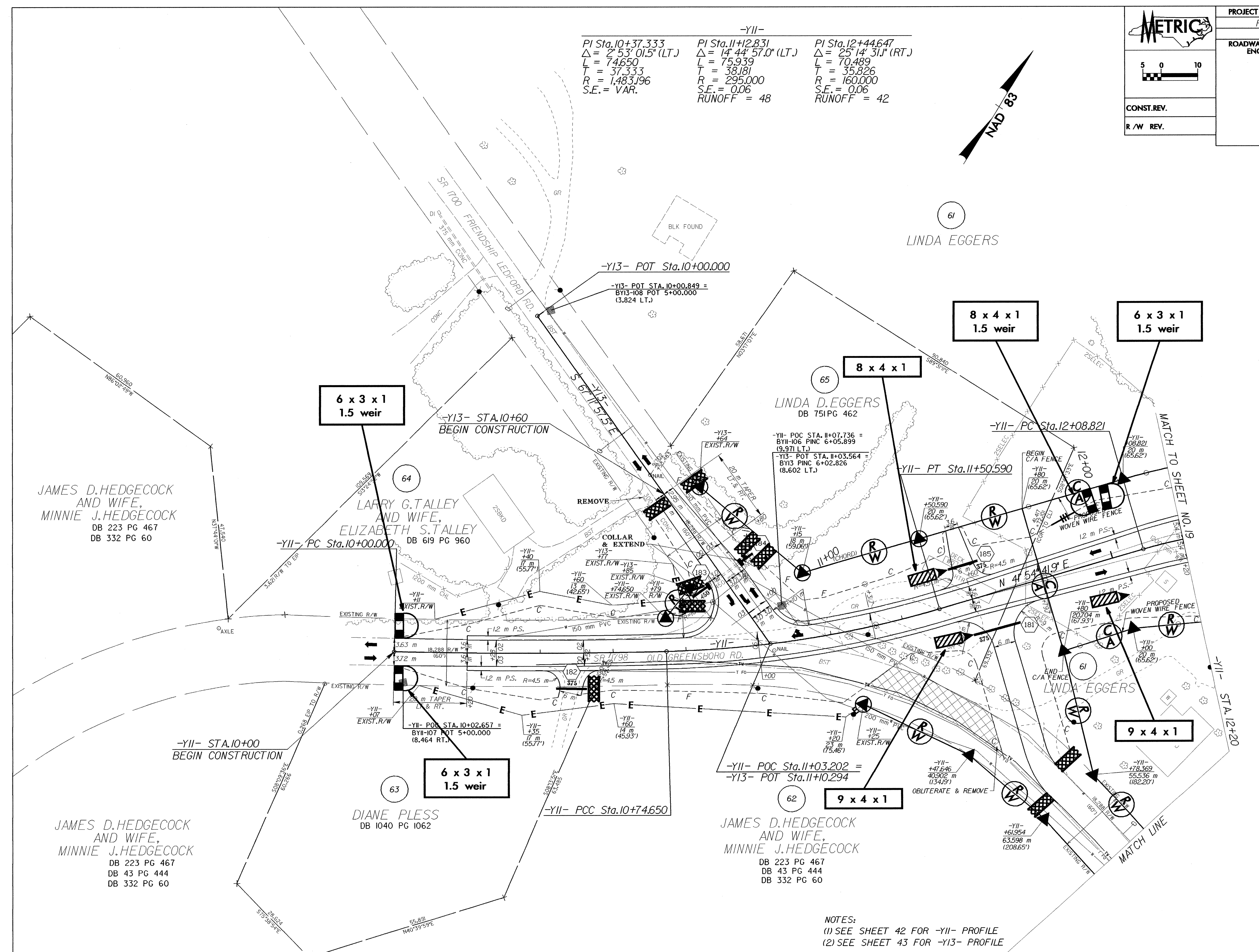
	PROJECT REFERENCE NO.	SHEET NO.
	R-2568B	EC-44/CONST.23
	R/W SHEET NO.	23
ROADWAY DESIGN ENGINEER	HYDRAULICS ENGINEER	
CONST. REV.		
R/W REV.		

-YII-		
PI Sta. 10+37.333 Δ = 2° 53' 01.5" (LT.) L = 74.650 T = 37.333 R = 1,483.196 S.E. = VAR.	PI Sta. 11+12.831 Δ = 14° 44' 57.0" (LT.) L = 75.939 T = 38.181 R = 295.000 S.E. = 0.06 RUNOFF = 48	PI Sta. 12+44.647 Δ = 25° 14' 31.1" (RT.) L = 70.489 T = 35.826 R = 160.000 S.E. = 0.06 RUNOFF = 42



NOTES:
 (1) SEE SHEET 42 FOR -YII- PROFILE
 (2) SEE SHEET 43 FOR -YI3- PROFILE