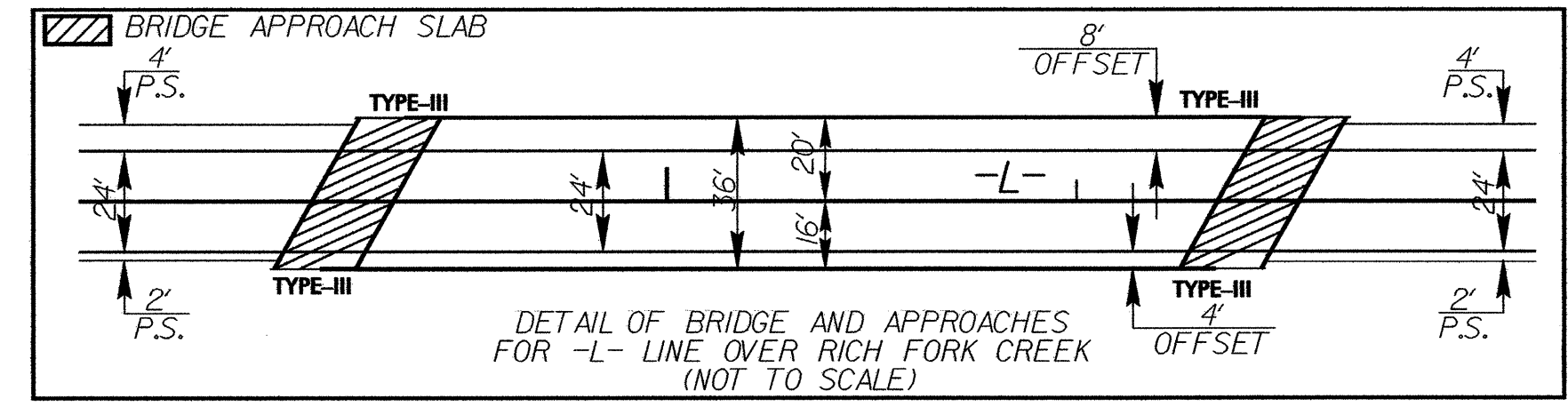
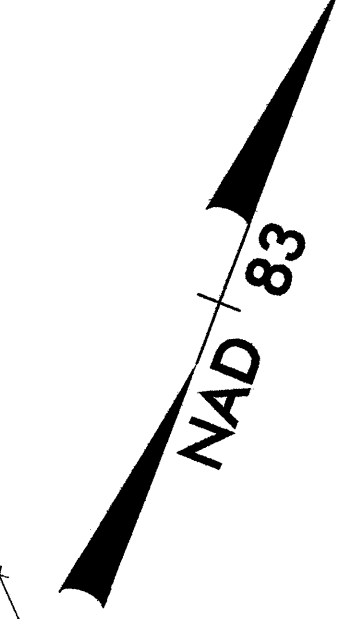


PROJECT REFERENCE NO.	SHEET NO.
B-4096	EC-4/CONST.5
R/W SHEET NO.	
ROADWAY DESIGN ENGINEER	HYDRAULICS ENGINEER

SEE SHEETS 4-A & 4-B FOR DETOUR  
SEE SHEET 5 FOR PROFILE



NOTE: THERE IS CONCRETE PAVEMENT LAYER UNDER THE EXISTING ASPHALT PAVEMENT. PAVEMENT REMOVAL FOR BOTH THE ASPHALT AND THE CONCRETE PAVEMENT WILL BE PAID FOR AT CONTRACT LUMP SUM PRICE FOR GRADING.



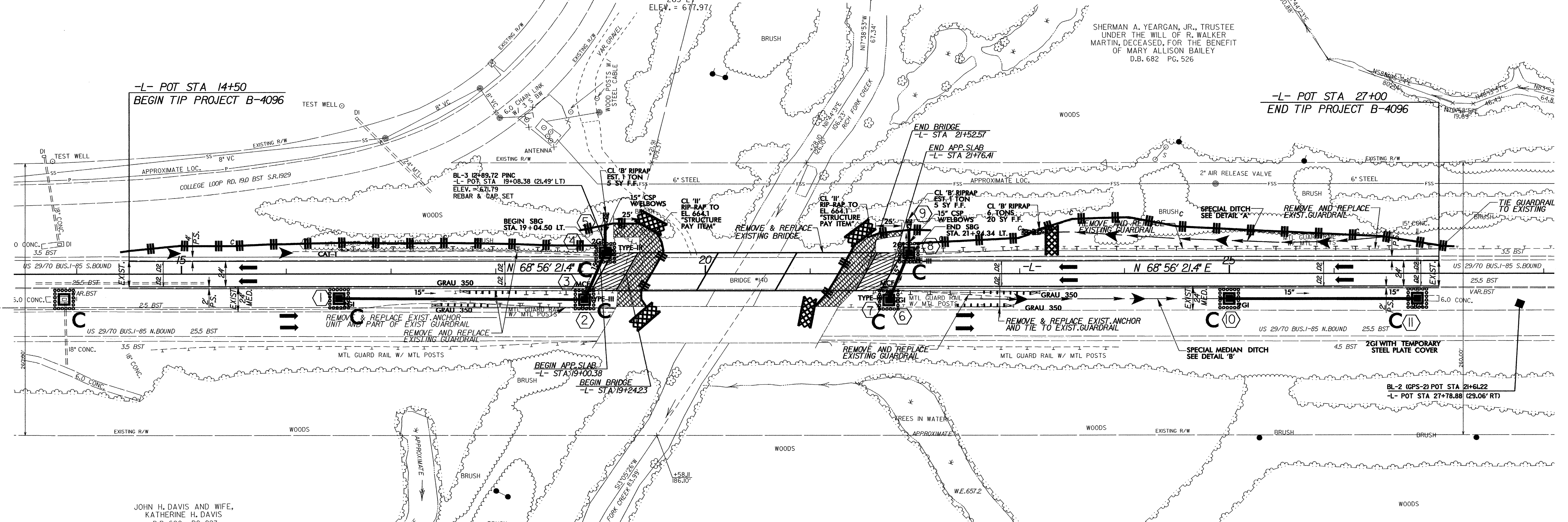
DAVIDSON COUNTY COMMUNITY COLLEGE  
D.B. 415 PG. 66

JOHN H. DAVIS AND WIFE,  
KATHERINE H. DAVIS  
D.B. 600 PG. 923

SHERMAN A. YEARGAN, JR., TRUSTEE  
UNDER THE WILL OF R. WALKER  
MARTIN, DECEASED, FOR THE BENEFIT  
OF MARY ALLISON BAILEY  
D.B. 682 PG. 526

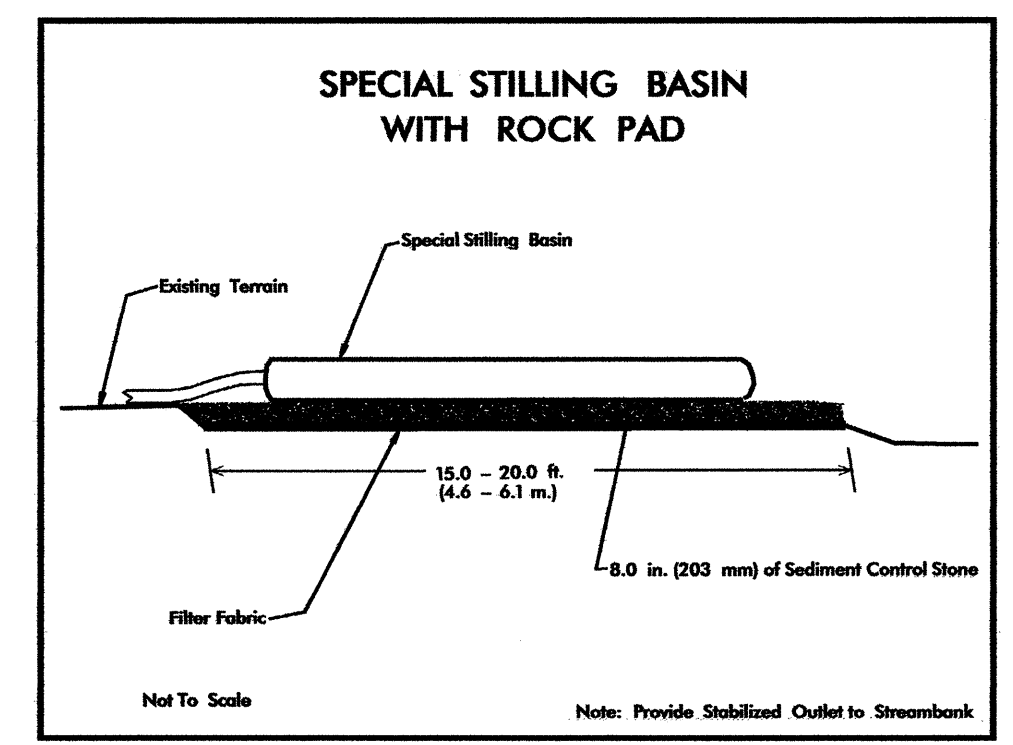
-L- POT STA 14+50  
BEGIN TIP PROJECT B-4096

-L- POT STA 27+00  
END TIP PROJECT B-4096

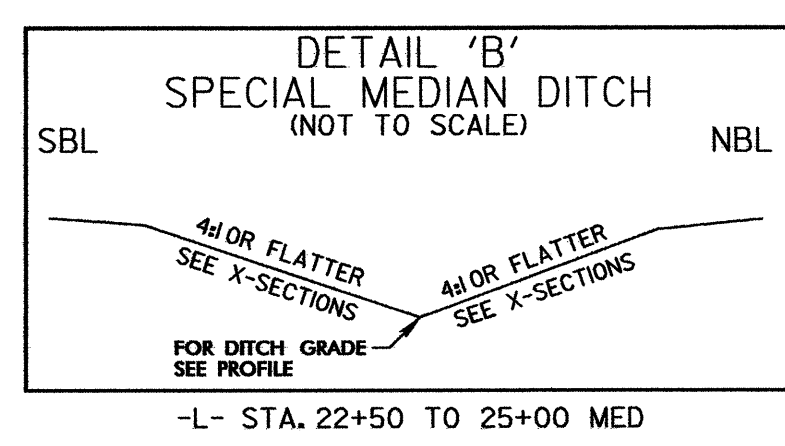
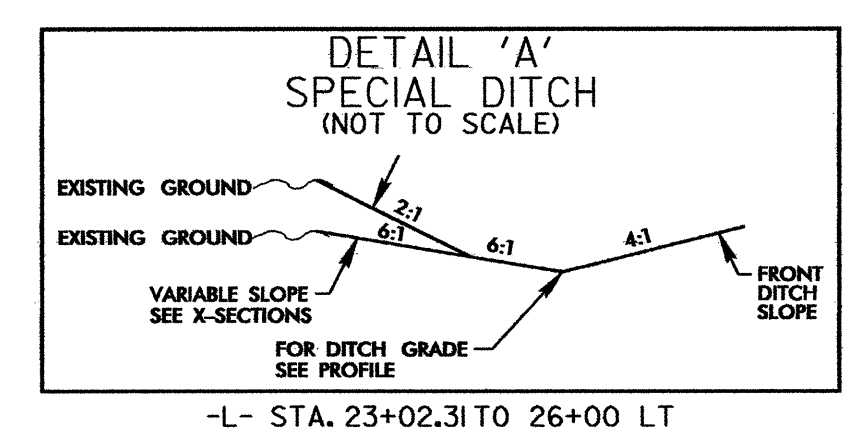


NOTE: 'MCF' DENOTES MODIFIED CONCRETE FLUME  
NOTE: 'SBG' DENOTES SHOULDER BERM GUTTER

TALMADGE RUSSELL HINKLE FISHER AND EDGAR BRUCE HINKLE, JR.,  
DB, 598 PG. 304



NOTE: UTILIZE TEMPORARY SPECIAL STILLING BASINS AS STILLING BASIN WHERE APPLICABLE.



**DATUM DESCRIPTION**  
THE LOCALIZED COORDINATE SYSTEM DEVELOPED FOR THIS PROJECT IS BASED ON THE STATE PLANE COORDINATES ESTABLISHED BY NCDOT FOR MONUMENT "B4096-1" WITH NAD 83 STATE PLANE GRID COORDINATES OF NORTHING: 771622988(ft) EASTING: 1650577.230(ft) THE AVERAGE COMBINED GRID FACTOR USED ON THIS PROJECT (GROUND TO GRID) IS: 0.99990194 THE N.C. LAMBERT GRID BEARING AND LOCALIZED HORIZONTAL GROUND DISTANCE FROM "B4096-1" TO -L- STATION 14+50 IS N 64° 56' 31.50" E 332.10 FT. ALL LINEAR DIMENSIONS ARE LOCALIZED HORIZONTAL DISTANCES VERTICAL DATUM USED IS NGVD 29