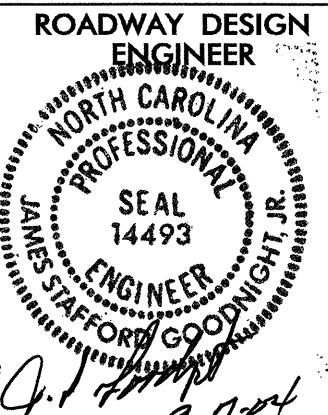
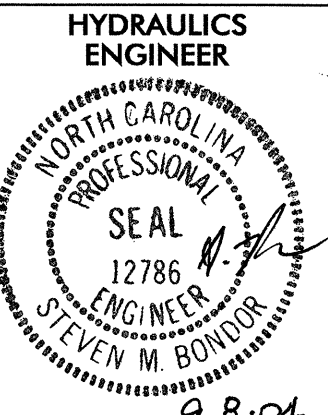
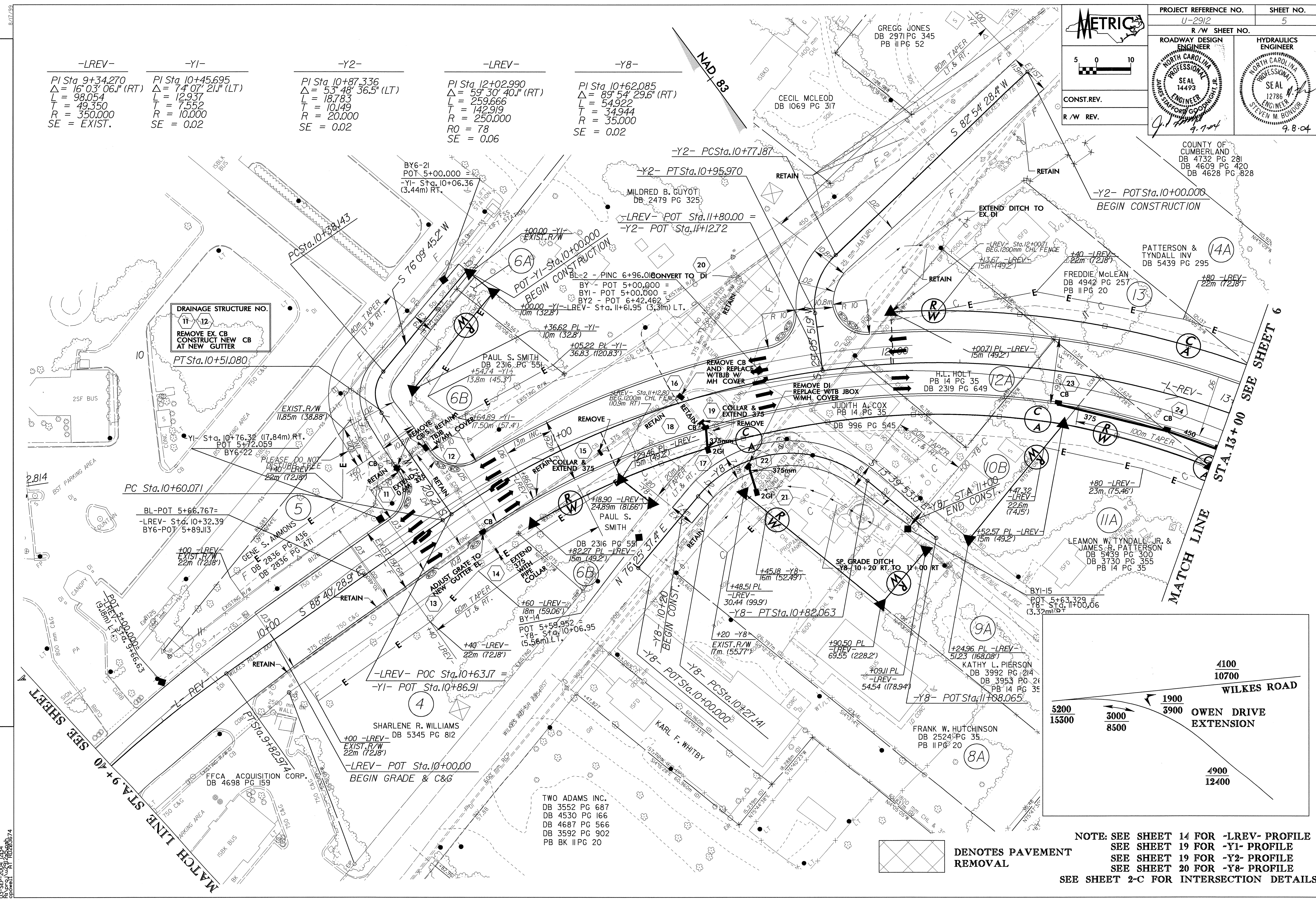


PROJECT REFERENCE NO.		SHEET NO.	
U-2912		5	
R/W SHEET NO.			
ROADWAY DESIGN ENGINEER		HYDRAULICS ENGINEER	
			
CONST. REV.		R/W REV.	
9.1.04		9.8.04	

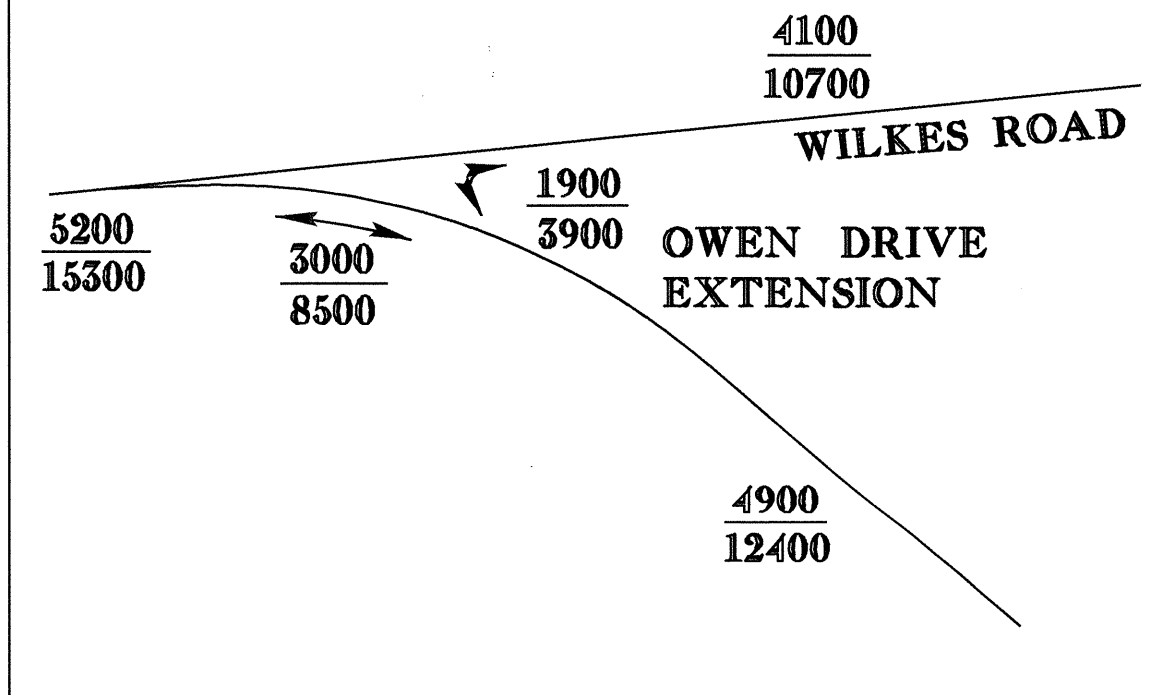
-LREV-	-Y1-	-Y2-	-LREV-	-Y8-
PI Sta 9+34.270 Δ = 16° 03' 06.1" (RT) L = 98.054 T = 49.350 R = 350.000 SE = EXIST.	PI Sta 10+45.695 Δ = 74° 07' 21.1" (LT) L = 12.937 T = 7.552 R = 10.000 SE = 0.02	PI Sta 10+87.336 Δ = 53° 48' 36.5" (LT) L = 18.783 T = 10.149 R = 20.000 SE = 0.02	PI Sta 12+02.990 Δ = 59° 30' 40.1" (RT) L = 259.666 T = 142.919 R = 250.000 RO = 78 SE = 0.06	PI Sta 10+62.085 Δ = 89° 54' 29.6" (RT) L = 54.922 T = 34.944 R = 35.000 SE = 0.02

COUNTY OF CUMBERLAND
DB 4732 PG 281
DB 4609 PG 420
DB 4628 PG 828



REVISIONS

9.17.04
RD203674
CPowell



NOTE: SEE SHEET 14 FOR -LREV- PROFILE
SEE SHEET 19 FOR -Y1- PROFILE
SEE SHEET 19 FOR -Y2- PROFILE
SEE SHEET 20 FOR -Y8- PROFILE
SEE SHEET 2-C FOR INTERSECTION DETAILS

 DENOTES PAVEMENT REMOVAL