
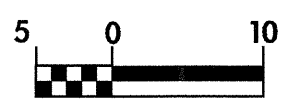
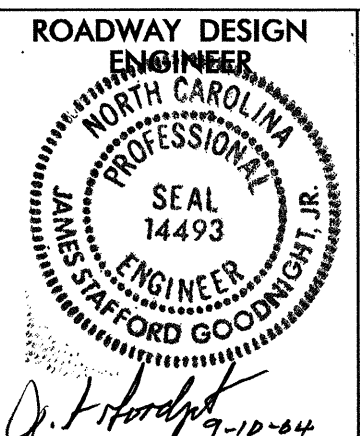
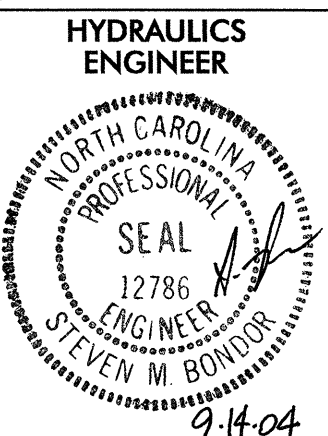


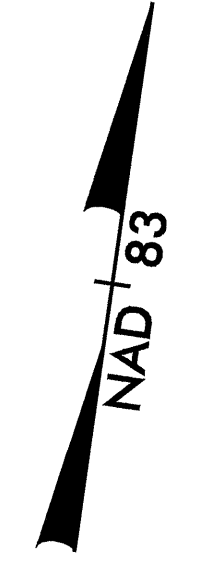
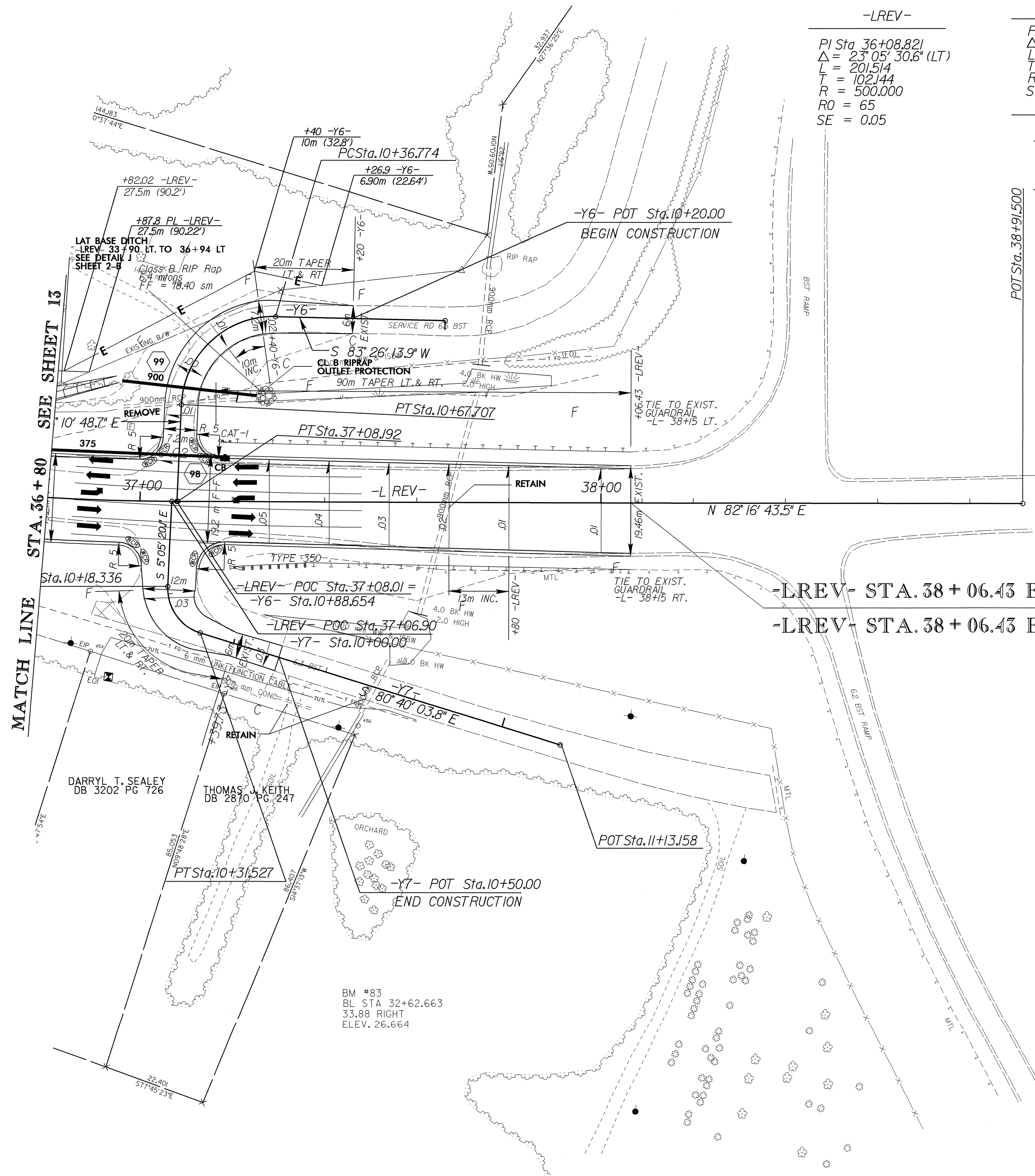
8/17/04

  CONST. REV.	PROJECT REFERENCE NO. U-2912	SHEET NO. 13
	R/W SHEET NO.	
 ROADWAY DESIGN ENGINEER	 HYDRAULICS ENGINEER	
R/W REV.	J. J. Gooding 9-10-04 9-14-04	

-LREV-  
 PI Sta 36+08.821  
 $\Delta = 23^\circ 05' 30.6''$  (LT)  
 L = 201.514  
 T = 102.144  
 R = 500.000  
 RO = 65  
 SE = 0.05

-Y6-  
 PI Sta 10+56.297  
 $\Delta = 88^\circ 37' 02.7''$  (LT)  
 L = 30.933  
 T = 19.523  
 R = 20.000  
 SE = 0.01

-Y7-  
 PI Sta 10+26.090  
 $\Delta = 75^\circ 34' 43.7''$  (LT)  
 L = 13.191  
 T = 7.754  
 R = 10.000  
 SE = 0.03



-LREV- STA. 38 + 06.43 END STATE PROJECT 34885.21  
 -LREV- STA. 38 + 06.43 END F.A. PROJECT STP-0620(1)

 DENOTES PAVEMENT REMOVAL

NOTE: SEE SHEET 18 FOR -LREV- PROFILE  
 SEE SHEET 20 FOR -Y6- PROFILE  
 SEE SHEET 20 FOR -Y7- PROFILE  
 SEE SHEET 2-F FOR INTERSECTION DETAILS

REVISIONS

08-SEP-2004 15:03  
R:\D\0\N\2912\13\13\24