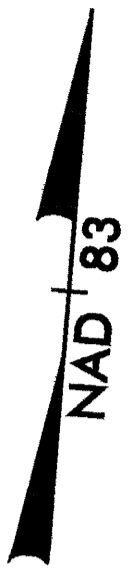


DATUM DESCRIPTION

THE LOCALIZED COORDINATE SYSTEM DEVELOPED FOR THIS PROJECT IS BASED ON THE STATE PLANE COORDINATES ESTABLISHED BY NCGS FOR MONUMENT "SEVEN" WITH NAD 83 STATE PLANE GRID COORDINATES OF NORTHING: 138173.482(m) EASTING: 622122.922(m) THE AVERAGE COMBINED GRID FACTOR USED ON THIS PROJECT (GROUND TO GRID) IS: 0.99988431 THE N.C. LAMBERT GRID BEARING AND LOCALIZED HORIZONTAL GROUND DISTANCE FROM "SEVEN" TO -LREV- STATION 6+00.00 IS N 50° 57' 12.934" W AT 4216.18m ALL LINEAR DIMENSIONS ARE LOCALIZED HORIZONTAL DISTANCES VERTICAL DATUM USED IS NAVD 88

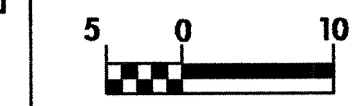
-LREV-
 PI Sta 9+34.270
 $\Delta = 16' 03" 06.1" (RT)$
 $L = 98.054$
 $T = 49.350$
 $R = 350.000$

-Y12-
 PI Sta 10+67.154
 $\Delta = 13' 03" 36.5" (LT)$
 $L = 68.383$
 $T = 34.340$
 $R = 300.000$



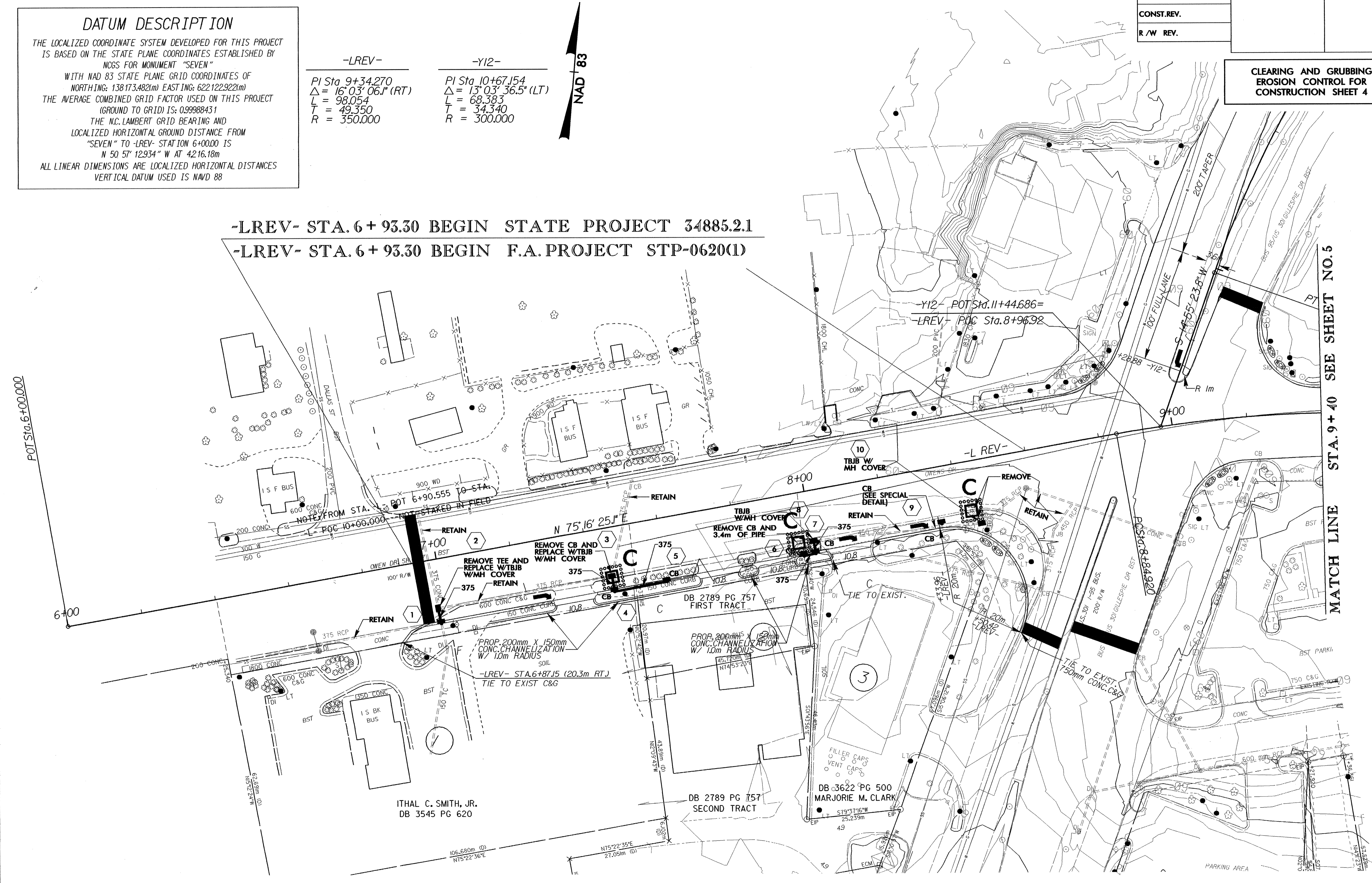
NOTE:
 PLACE TEMPORARY ROCK SEDIMENT DAMS TYPE-B AND TEMPORARY ROCK SILT CHECKS TYPE-A AT DRAINAGE OUTLETS.

PROJECT REFERENCE NO. U-2912		SHEET NO. EC-3/CONST.4
R/W SHEET NO.		
ROADWAY DESIGN ENGINEER	HYDRAULICS ENGINEER	
CONST. REV.		
R/W REV.		



**CLEARING AND GRUBBING
 EROSION CONTROL FOR
 CONSTRUCTION SHEET 4**

-LREV- STA. 6+93.30 BEGIN STATE PROJECT 34885.21
-LREV- STA. 6+93.30 BEGIN F.A. PROJECT STP-0620(1)



MATCH LINE STA. 9+40 SEE SHEET NO.5