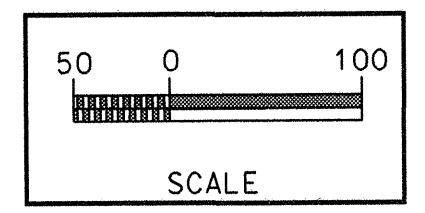
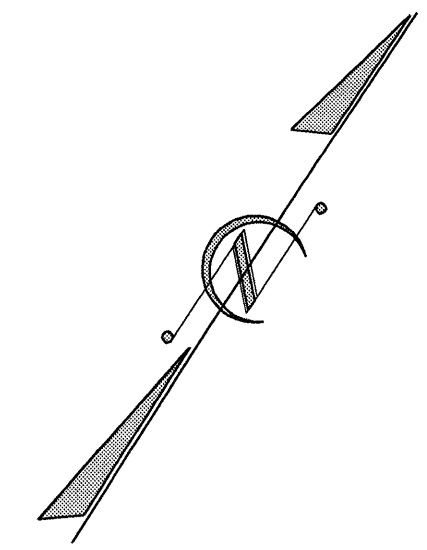


B-17/99

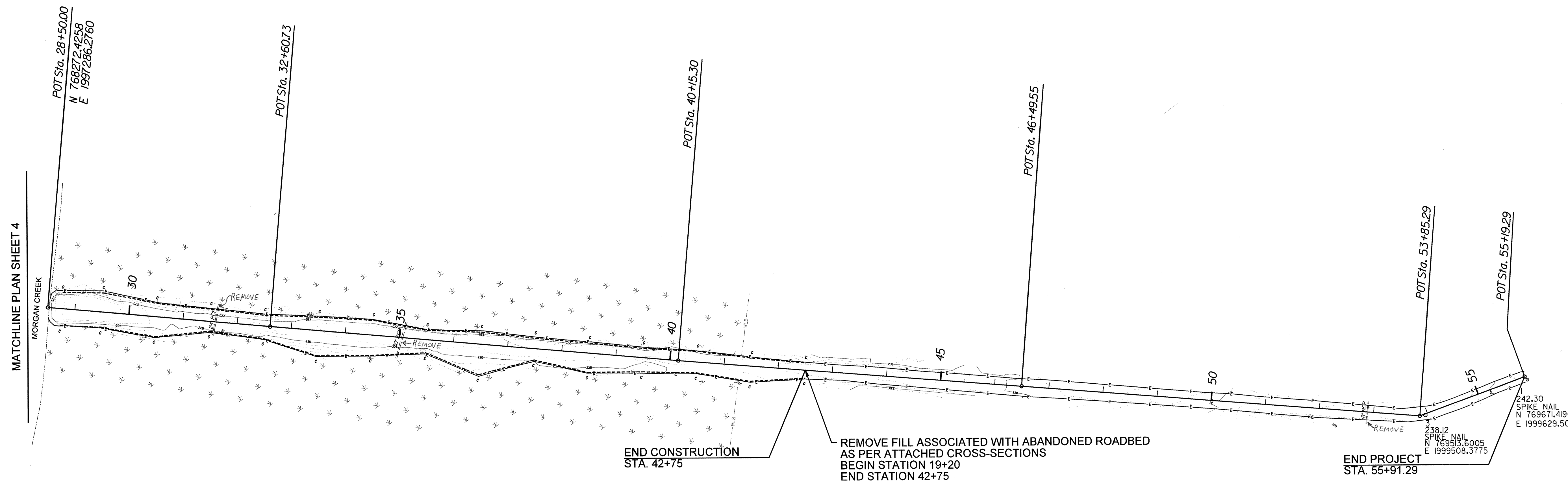
PROJECT REFERENCE NO.	SHEET NO.
B-2963	WM-5
PROJECT ENGINEER	

Stantec
 Stantec Consulting Services Inc.
 Suite 300, 801 Jones Franklin Road
 Raleigh, NC 27606
 Tel: 919.851.6866
 Fax: 919.851.7024
 www.stantec.com



STATION	TANGENT NUMBER	TANGENT LENGTH	BEARING
EAST			
28+50.00			
	T11	410.73'	N 61° 07' 32.16" E
32+60.73			
	T12	754.57'	N 61° 04' 27.31" E
40+15.30			
	T13	634.25'	N 60° 39' 07.74" E
46+49.55			
	T14	735.74'	N 60° 40' 22.98" E
53+85.29			
	T15	206.00'	N 36° 03' 04.75" E
55+91.29			

BENCHMARK	BM NUMBER	LENGTH TO STA. 55+19.29	BEARING TO STA. 55+19.29
SPIKE NAIL	1	195.95'	N 35° 28' 21.52" E
SPIKE NAIL	3	7.62'	N 76° 38' 57.11" W



NOTE:
 ASPHALT PILES NEAR STATION 10+00 AND 55+00
 SHALL BE REMOVED BY CONTRACTOR

EAST

03/5/10 PM
 C:\transportation\design\environmental\71000198_stream_PSH5.dgn