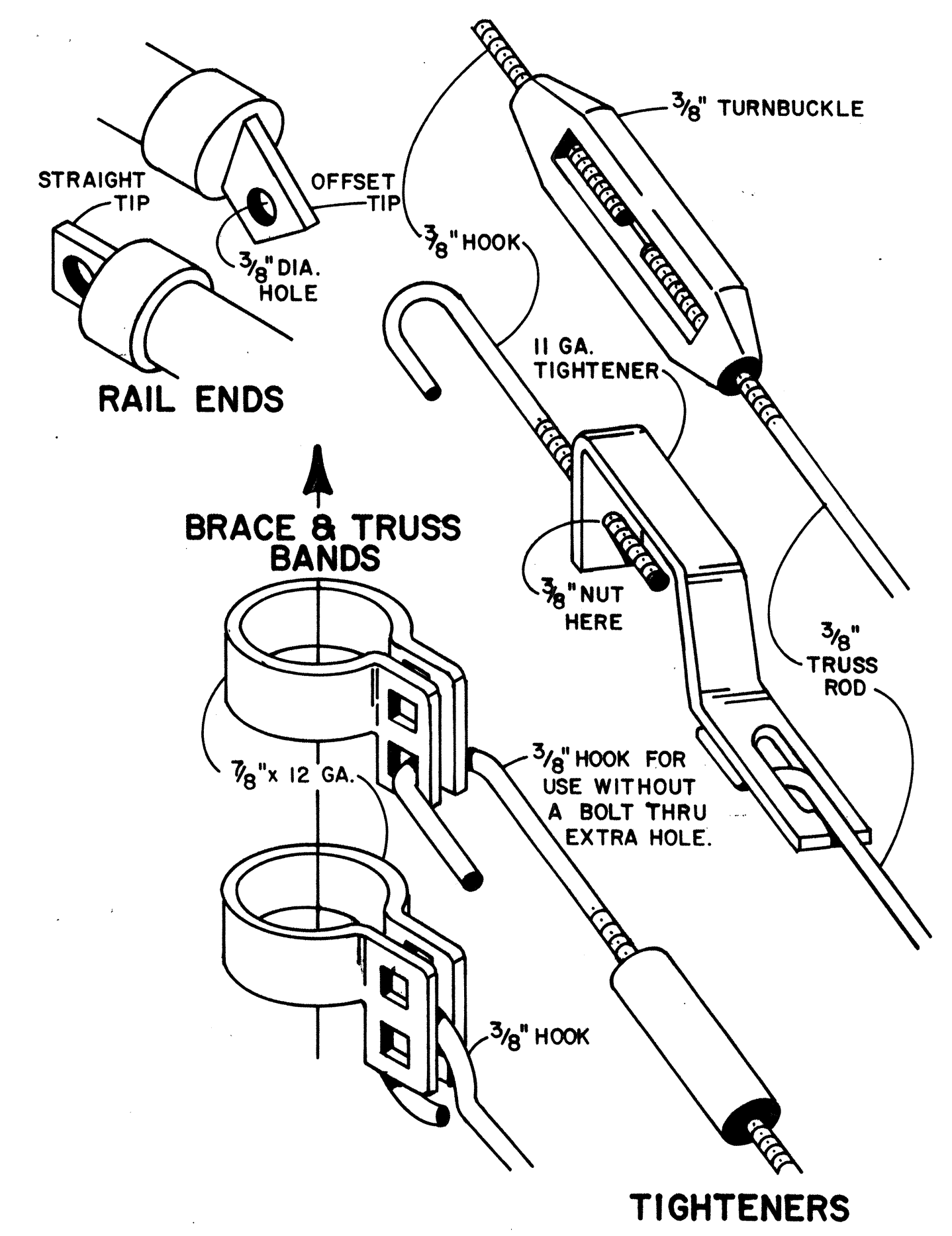
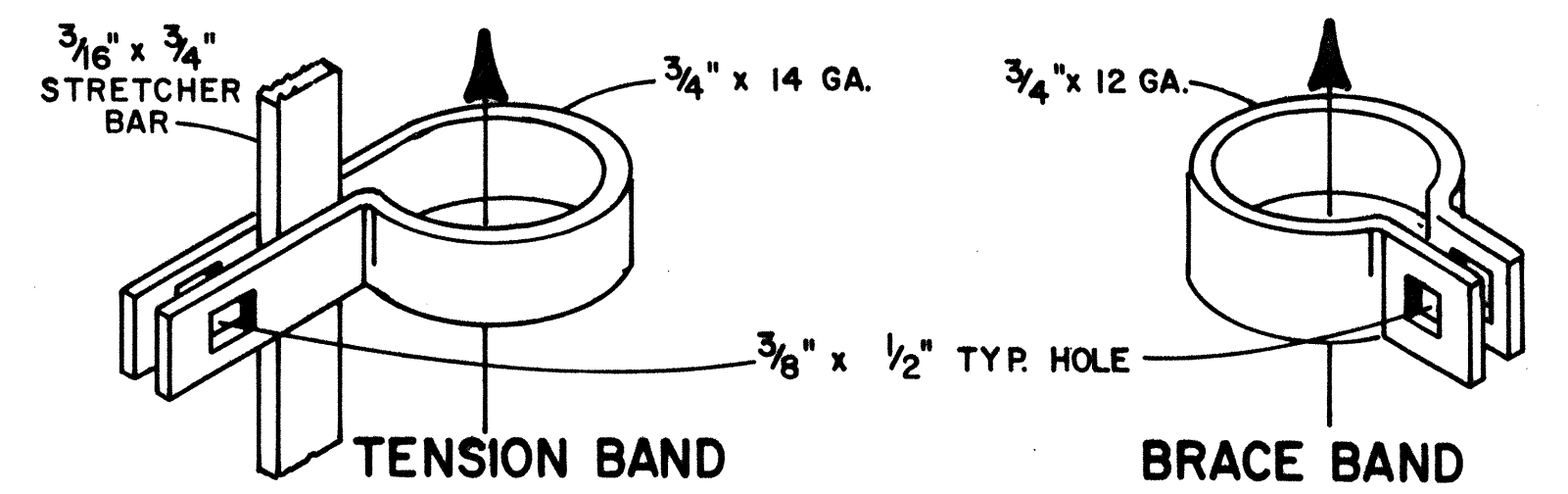
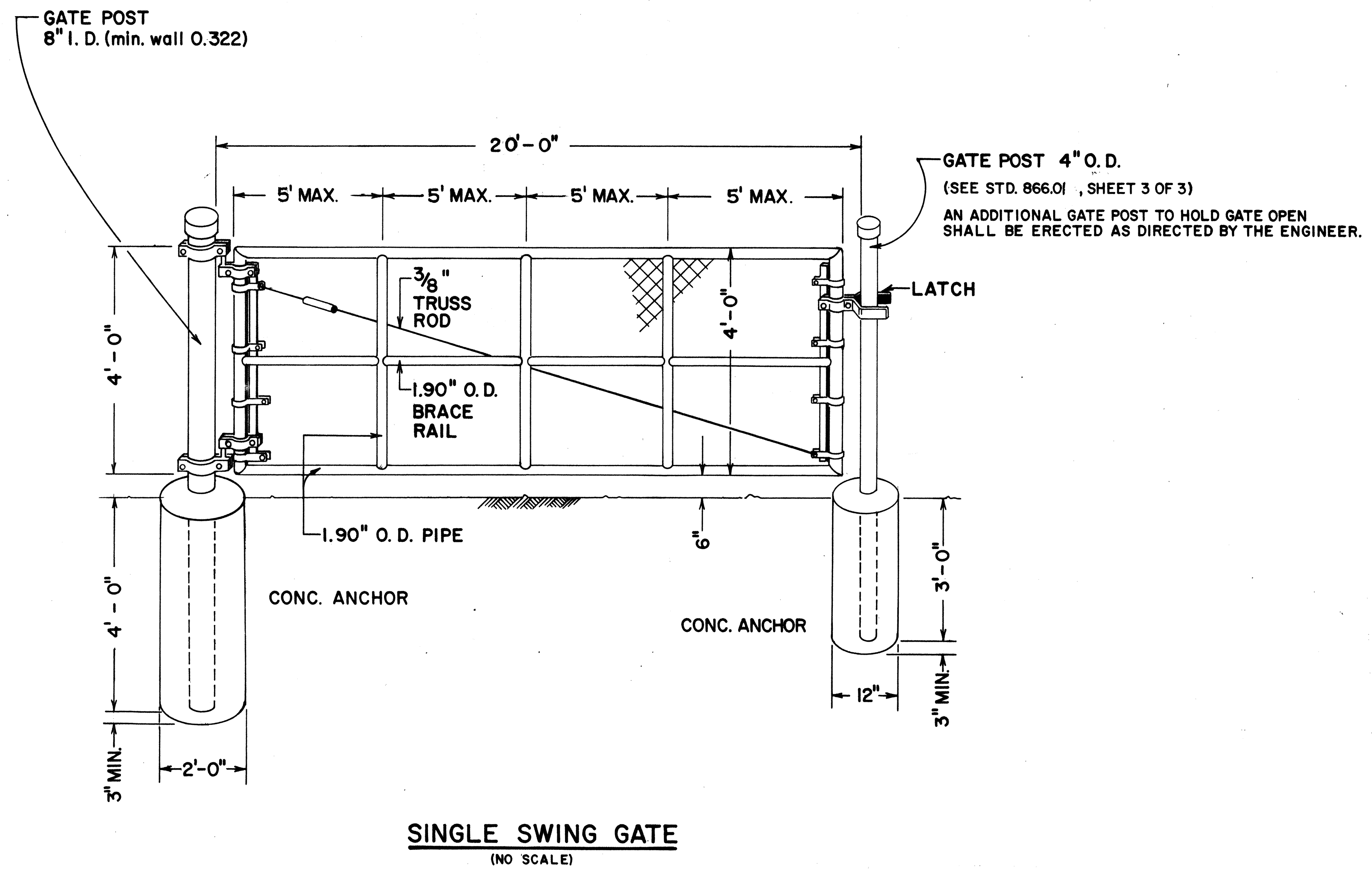
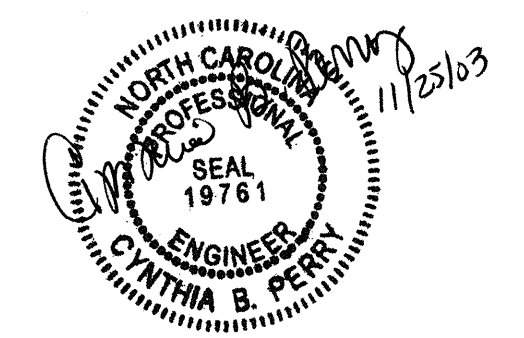


NOTE: FENCE HARDWARE VARIES DUE TO DIFFERING MANUFACTURES SUPPLIES.  
SEE STD. NO. 866.01, SHEET 2 OF 3, FOR DETAIL OF HINGES AND LATCH.  
USE STANDARD 866.01A IN CONJUNCTION WITH THIS DETAIL.



**HARDWARE**  
(DIMENSIONS SHOWN ARE MINIMUMS)

01-OCT-2003 14:22 W:\Special Details\spell\stand\Fencegate30.dgn ericward AT D5212260



DESIGN SERVICES UNIT STANDARDS AND SPECIAL DESIGN Office 919-250-4128 FAX 919-250-4119	
<b>SINGLE SWING GATE</b> <b>20' CHAIN LINK GATE</b>	
ORIGINAL BY:	DATE: 6/81
MODIFIED BY:	DATE:
CHECKED BY: <i>C. Perry</i>	DATE: 10-03
FILE SPEC.: flat file drawer	