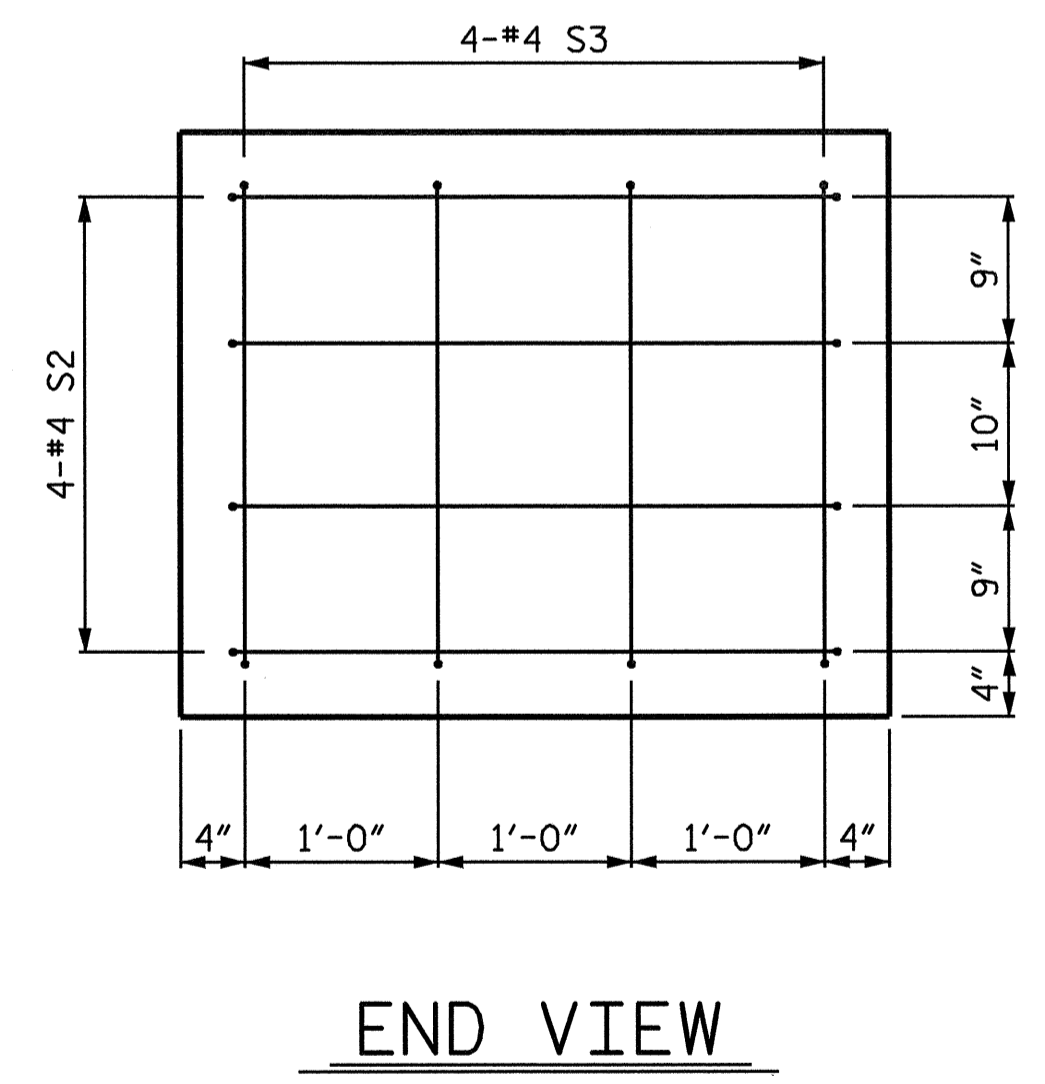
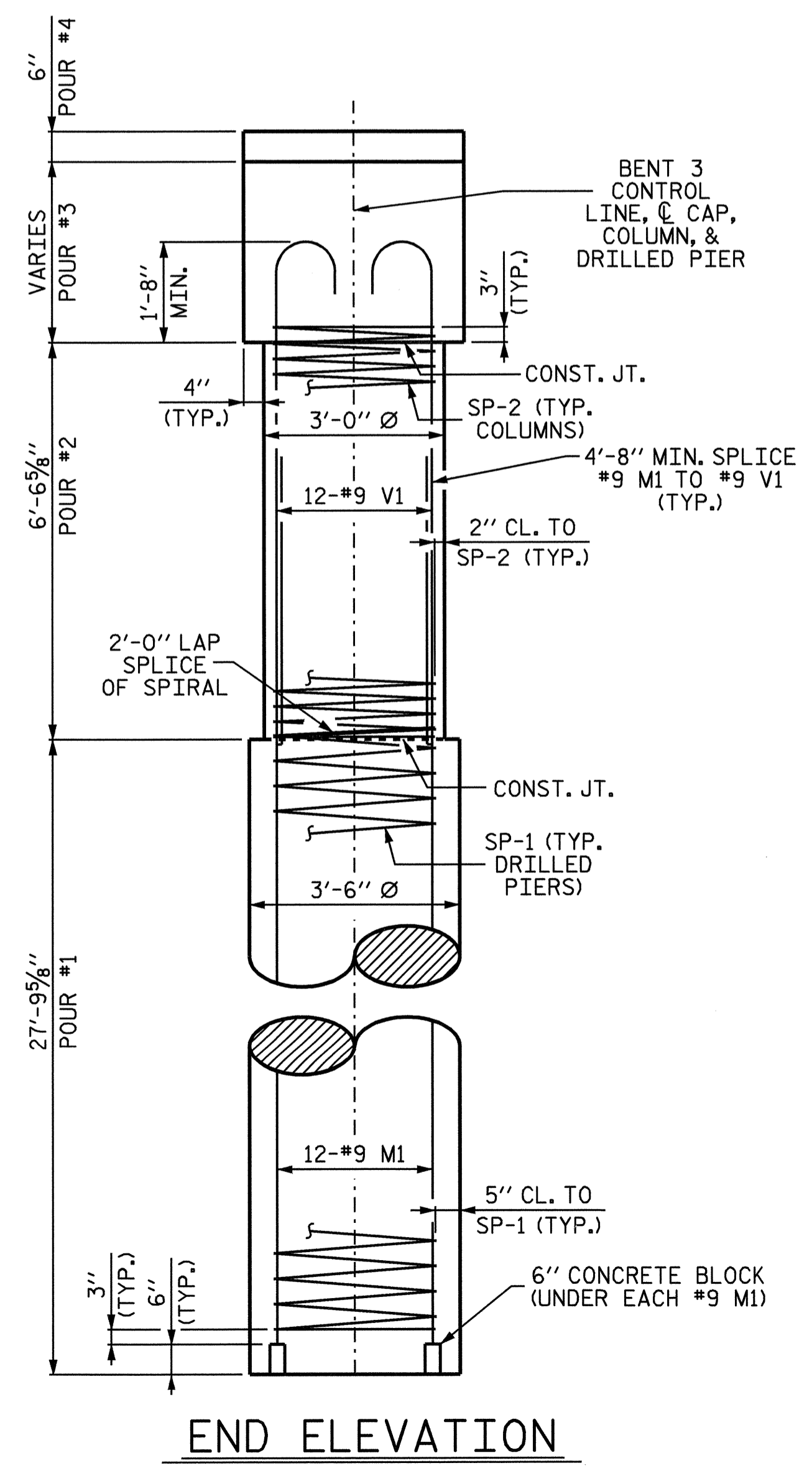


PLAN OF DRILLED PIERS AND COLUMNS



BAR TYPES

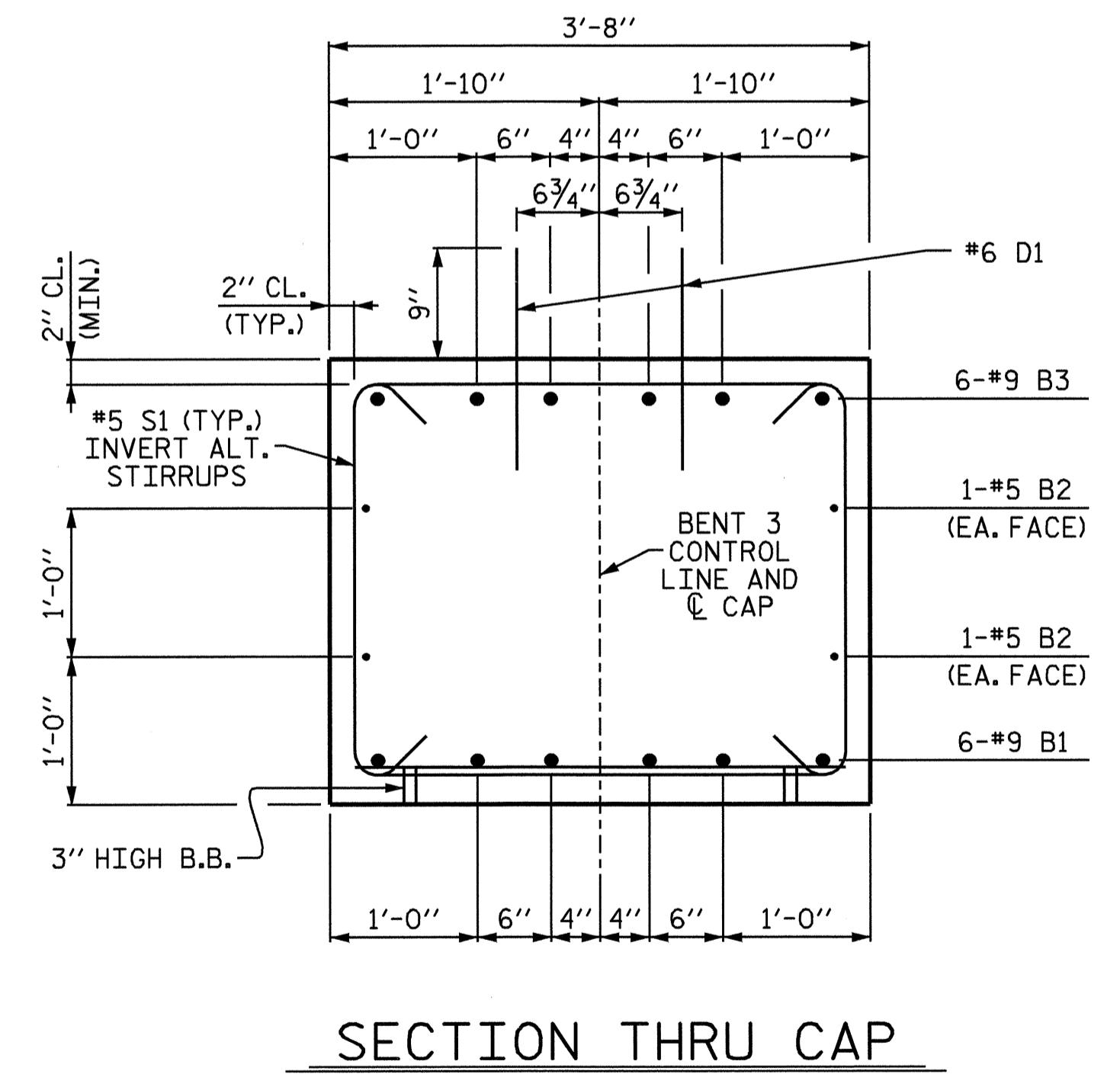
BILL OF MATERIAL

BENT 3					
BAR	NO.	SIZE	TYPE	LENGTH	WEIGHT
B1	6	9	STR.	41'-10"	853
B2	4	5	STR.	41'-10"	175
B3	6	9	1	44'-2"	901
B4	2	4	STR.	3'-6"	5
B5	2	4	STR.	3'-4"	4
D1	48	6	STR.	1'-6"	108
M1	36	9	STR.	35'-0"	4284
S1	38	5	3	9'-6"	377
S2	8	4	4	6'-2"	33
S3	8	4	4	5'-6"	29
S4	2	4	4	3'-6"	5
S5	2	4	4	3'-11"	5
S6	2	4	4	4'-4"	6
S7	2	4	4	4'-8"	6
V1	36	9	2	9'-6"	1163
REINFORCING STEEL - LBS.					7954
SP-1	3	**	5	566'-5"	1772
SP-2	3	**	5	255'-4"	512
SPIRAL COLUMN REINFORCING STEEL - LBS.					2284
DRILLED PIER CONCRETE POUR #1 - DRILLED PIERS - C.Y.					29.7
CLASS A CONCRETE POUR #2 - COLUMNS - LBS.					5.1
POUR #3 - CAP - LBS.					17.3
POUR #4 - LATERAL GUIDE - LBS.					0.2
TOTAL CLASS A CONCRETE - C.Y.					22.6
3'-6" Ø DRILLED PIER IN SOIL - LIN. FT.					69.4
3'-6" Ø DRILLED PIER NOT IN SOIL - LIN. FT.					14.0
PERMANENT STEEL CASING FOR 3'-6" Ø DRILLED PIER - LIN. FT.					47.4
SPT TESTING - EA.					3
CROSSHOLE SONIC LOGGING TUBES - LIN. FT.					363.6

ALL BAR DIMENSIONS ARE OUT TO OUT.

** THE SP-1 SPIRAL REINFORCING STEEL SHALL BE W31 OR D-31 COLD DRAWN WIRE OR #5 PLAIN OR DEFORMED BAR. THE SP-2 SPIRAL REINFORCING STEEL SHALL BE W20 OR D-20 COLD DRAWN WIRE OR #4 PLAIN OR DEFORMED BAR.

*** NOT REQUIRED AT CONSTRUCTION JOINT BETWEEN DRILLED PIER AND COLUMN.



PROJECT NO. B-2963
DURHAM COUNTY
 STATION: 24+92.50-L-

SHEET 2 OF 2

STATE OF NORTH CAROLINA
 DEPARTMENT OF TRANSPORTATION
 RALEIGH

SUBSTRUCTURE BENT 3

REVISIONS					
NO.	BY:	DATE:	NO.	BY:	DATE:
1			3		
2			4		

SHEET NO. S-24
 TOTAL SHEETS 32

DRAWN BY: William J. Parker DATE: 07/24/02
 CHECKED BY: J. KHARVA DATE: 9/19/02

