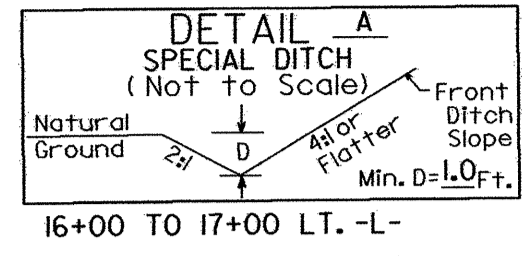


PROJECT REFERENCE NO.	SHEET NO.
B-2963	EC-5/CONST.4
R/W SHEET NO.	
ROADWAY DESIGN ENGINEER	HYDRAULICS ENGINEER

NOTE:
TEMPORARY SILT FENCE SHALL BE INSTALLED A MINIMUM OF 3 FEET FROM TOE OF FILL IN WETLAND AREAS



RESURFACE EXIST. PARKING AREA AND DRIVEWAY ABC 6" DEPTH

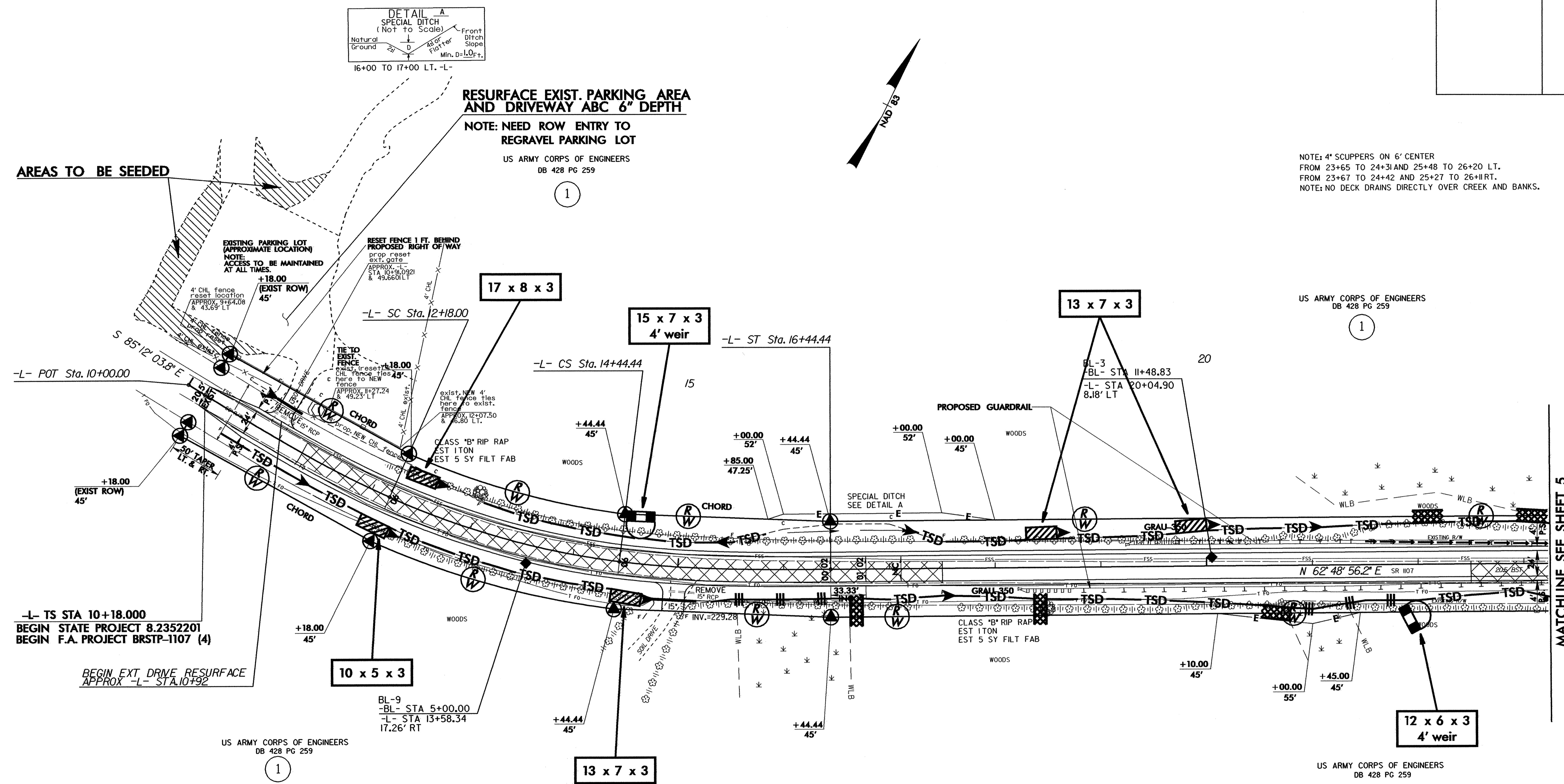
NOTE: NEED ROW ENTRY TO REGRAVEL PARKING LOT

US ARMY CORPS OF ENGINEERS
DB 428 PG 259

NOTE: 4" SCUPPERS ON 6' CENTER FROM 23+65 TO 24+31 AND 25+48 TO 26+20 LT. FROM 23+67 TO 24+42 AND 25+27 TO 26+11 RT. NOTE: NO DECK DRAINS DIRECTLY OVER CREEK AND BANKS.

US ARMY CORPS OF ENGINEERS
DB 428 PG 259

US ARMY CORPS OF ENGINEERS
DB 428 PG 259



AREAS TO BE SEEDED

EXISTING PARKING LOT (APPROXIMATE LOCATION)
NOTE: ACCESS TO BE MAINTAINED AT ALL TIMES.

RESET FENCE 1 FT. BEHIND PROPOSED RIGHT OF WAY
prop reset exit gate APPROX. STA 10+91.0921 & 49.6601 LT

-L- POT Sta. 10+00.00

-L- TS STA 10+18.00
BEGIN STATE PROJECT 8.2352201
BEGIN F.A. PROJECT BRSTP-1107 (4)

BEGIN EXT DRIVE RESURFACE
APPROX -L- STA. 10+92

US ARMY CORPS OF ENGINEERS
DB 428 PG 259

US ARMY CORPS OF ENGINEERS
DB 428 PG 259

DATUM DESCRIPTION

THE LOCALIZED COORDINATE SYSTEM DEVELOPED FOR THIS PROJECT IS BASED ON THE STATE PLANE COORDINATES ESTABLISHED BY NCDOT FOR MONUMENT "B2963-1" WITH NAD 83 STATE PLANE GRID COORDINATES OF NORTHING: 771601780(6) EASTING: 2010447248(6)

THE AVERAGE COMBINED GRID FACTOR USED ON THIS PROJECT (GROUND TO GRID) IS 0.999927649

THE N.C. LAMBERT GRID BEARING LOCALIZED HORIZONTAL GROUND DISTANCE FROM "B2963-1" TO -L- STATION 10+00.00 IS S 68°08'58.78" W 177814ft

ALL LINEAR DIMENSIONS ARE LOCALIZED HORIZONTAL DISTANCES VERTICAL DATUM USED IS NGVD 29

-L-		
Pls Sta 11+51.45	Pl Sta 13+32.06	Pls Sta 15+11.22
$\theta_s = 7' 30'' 00.0''$	$\Delta = 16' 59'' 00.0''$ (LT)	$\theta_s = 7' 30'' 00.0''$
$L_s = 200.00'$	$* D = 7' 30'' 00.0''$	$L_s = 200.00'$
$LT = 133.45'$	$L = 226.44'$	$LT = 133.45'$
$ST = 66.78'$	$T = 114.06'$	$ST = 66.78'$
	$* R = 763.94'$	
	$SE = .06$	
	$* DESIGN EXCEPTION$	

MATCHLINE SEE SHEET 5