

STATE	PROJECT NO.	SHEET NO.	TOTAL SHEETS
N.C.	7CR.10171.5, ETC.	14	16

7CR.10171.1	5
7CR.10791.1	5
7CR.20171.1	5
7CR.20791.1	5
7CR.30791.1	5
7CR.30791.8	5
7CR.30791.9	5

STATE OF  
NORTH CAROLINA  
DEPT. OF TRANSPORTATION  
DIVISION OF HIGHWAYS  
RALEIGH, N.C.

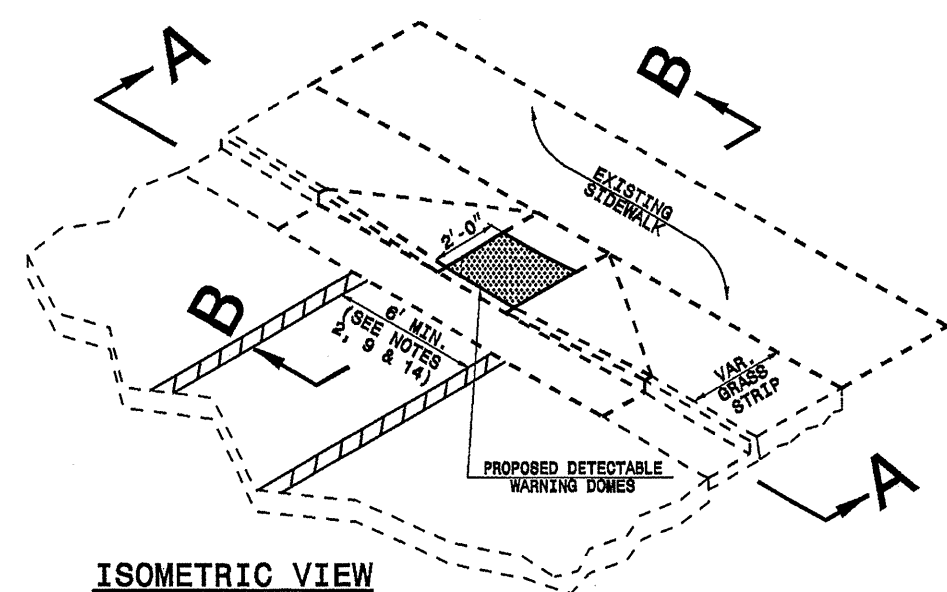
ENGLISH DETAIL DRAWING FOR  
**RETROFITTING DETECTABLE WARNING DOMES  
ONTO EXISTING WHEELCHAIR RAMP  
CURB CUT**

SHEET 3 OF 5  
**848D06**

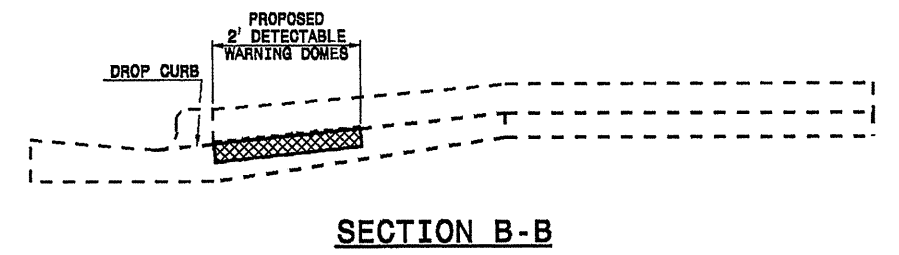
STATE OF  
NORTH CAROLINA  
DEPT. OF TRANSPORTATION  
DIVISION OF HIGHWAYS  
RALEIGH, N.C.

ENGLISH DETAIL DRAWING FOR  
**RETROFITTING DETECTABLE WARNING DOMES  
ONTO EXISTING WHEELCHAIR RAMP  
CURB CUT**

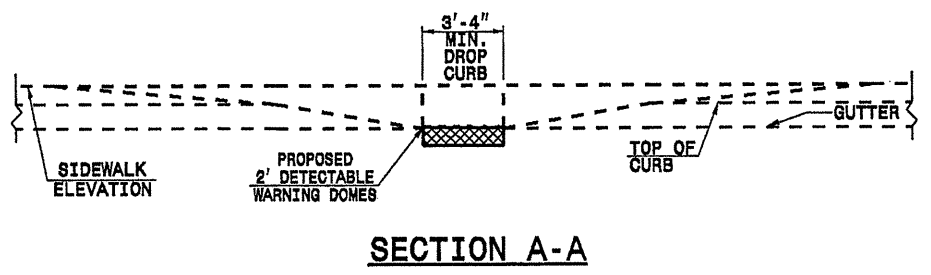
SHEET 3 OF 5  
**848D06**



**ISOMETRIC VIEW**

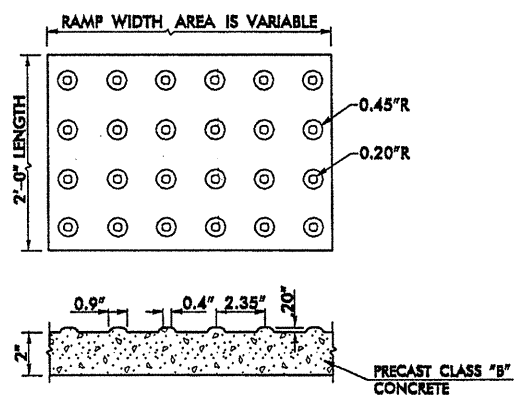


**SECTION B-B**

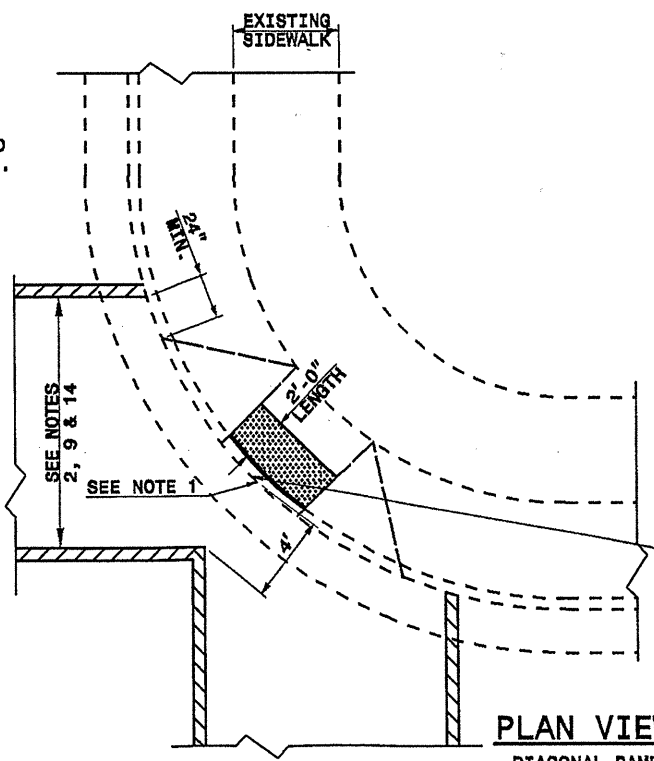


**SECTION A-A**

1. DETECTABLE WARNING DOMES SHALL COVER 2'-0" LENGTH AND FULL WIDTH OF THE RAMP FLOOR AS SHOWN ON THE DETAILS.
2. THE RAMP MAY BE YELLOW IN COLOR OR ANY COLOR WITH A 70% CONTRAST RATIO.

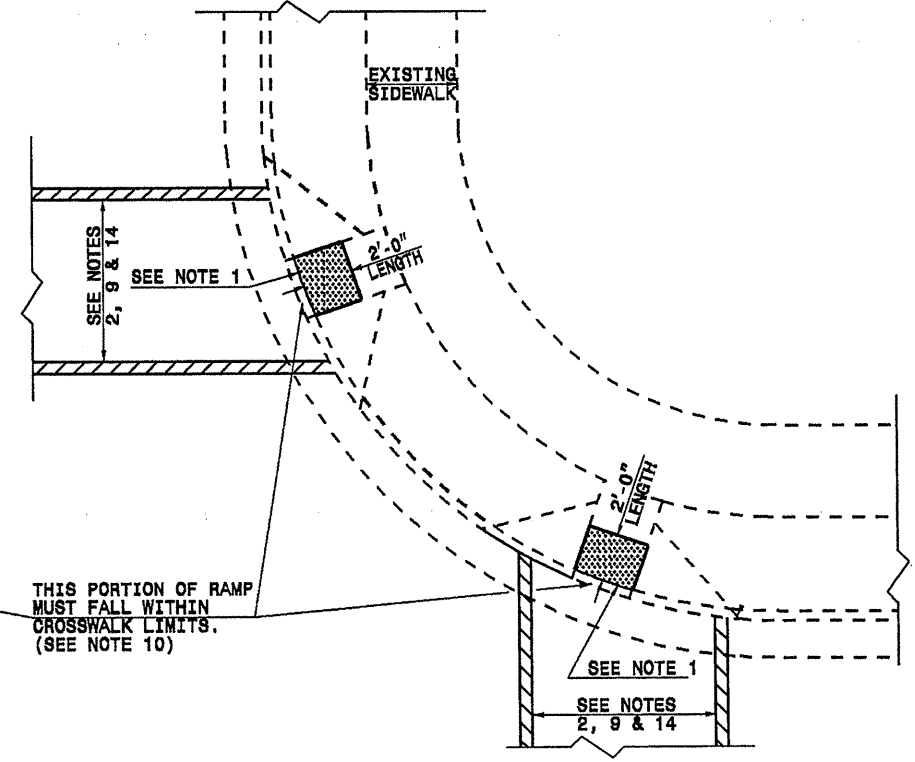


**DETECTABLE WARNING DOMES**



**PLAN VIEW**

DIAGONAL RAMP  
MAX. 25' RADII  
(60" MIN. FLOOR WIDTH)



**PLAN VIEW**

DUAL RAMPS  
ANY RADII  
(40" MIN. FLOOR WIDTH)

16:\pcc\2004 1440... 2005\Pack.egr 2005\Rockingham\WhereChair-2.dgn  
 5/28/99