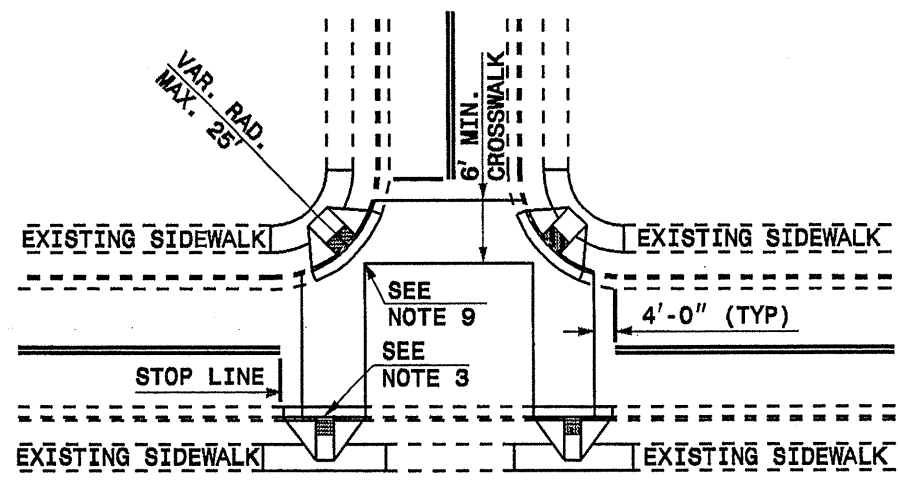


STATE	PROJECT NO.	SHEET NO.	TOTAL SHEETS
N.C.	7CR.10171.5, ETC.	15	16

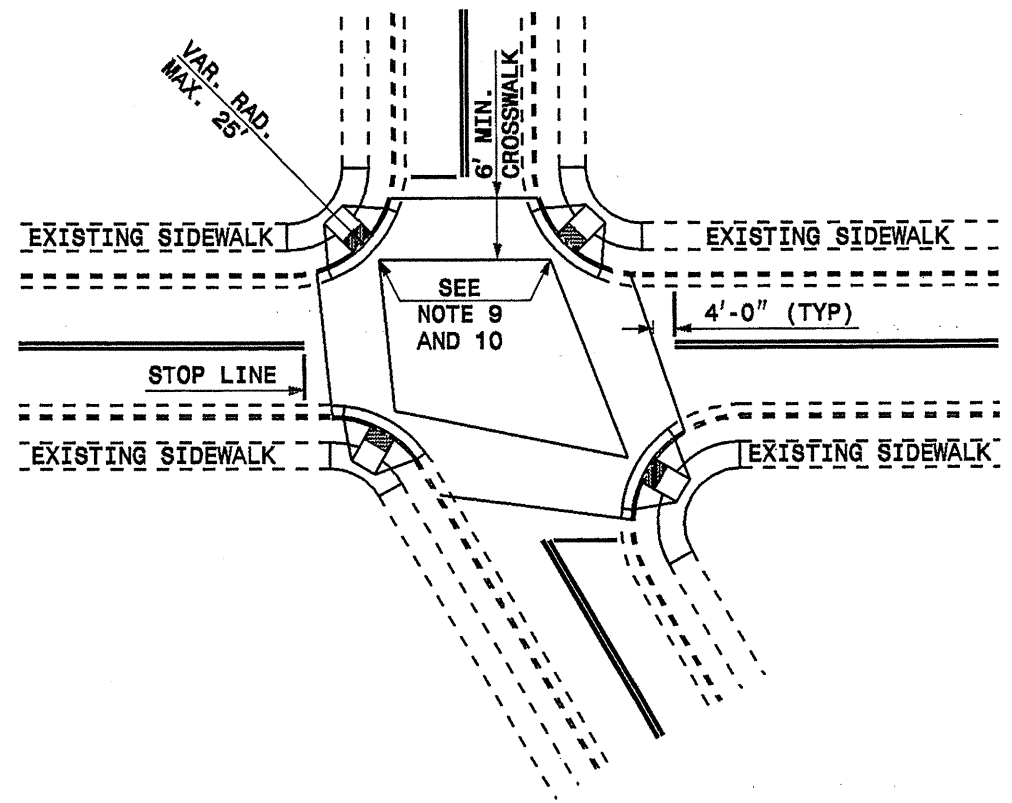
7CR.10171.5
7CR.10791.5
7CR.20171.5
7CR.20491.5
7CR.30791.5
7CR.30791.5
7CR.30791.5

STATE OF  
NORTH CAROLINA  
DEPT. OF TRANSPORTATION  
DIVISION OF HIGHWAYS  
RALEIGH, N.C.

ENGLISH DETAIL DRAWING FOR  
**WHEELCHAIR RAMP**  
CURB CUT

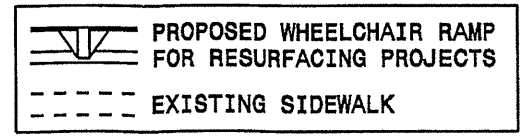


DETAIL SHOWING TYPICAL LOCATION OF WHEELCHAIR RAMPS, PEDESTRIAN CROSSWALKS AND STOP LINES FOR TEE INTERSECTIONS



DETAIL SHOWING TYPICAL LOCATION OF WHEELCHAIR RAMPS, PEDESTRIAN CROSSWALKS AND STOP LINES

**RESURFACING PROJECTS**



ALLOWABLE LOCATIONS  
DIAGONAL RAMP RADII...MAX. 25'

STATE OF  
NORTH CAROLINA  
DEPT. OF TRANSPORTATION  
DIVISION OF HIGHWAYS  
RALEIGH, N.C.

ENGLISH DETAIL DRAWING FOR  
**WHEELCHAIR RAMP**  
CURB CUT

5/28/99  
I:\SFP-2004\Mill\2005\Packege 2005\Rockingham\WheelChair-2.dgn