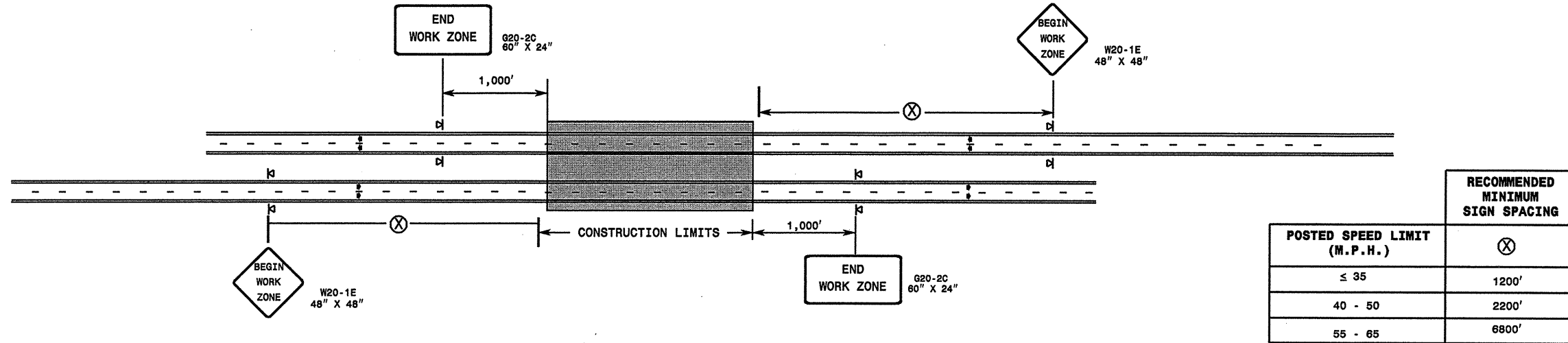


WBS Elements: 7CR.10171.5, 7CR.10791.5,
7CR.20171.5, 7CR.20791.5, 7CR.307915.5,
7CR.307918.5 & 7CR.307933.5

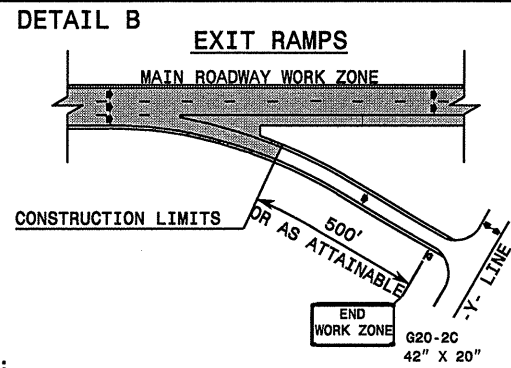
PROJ. REFERENCE NO. See to the Left	SHEET NO. TCP-3
--	--------------------

DETAIL A

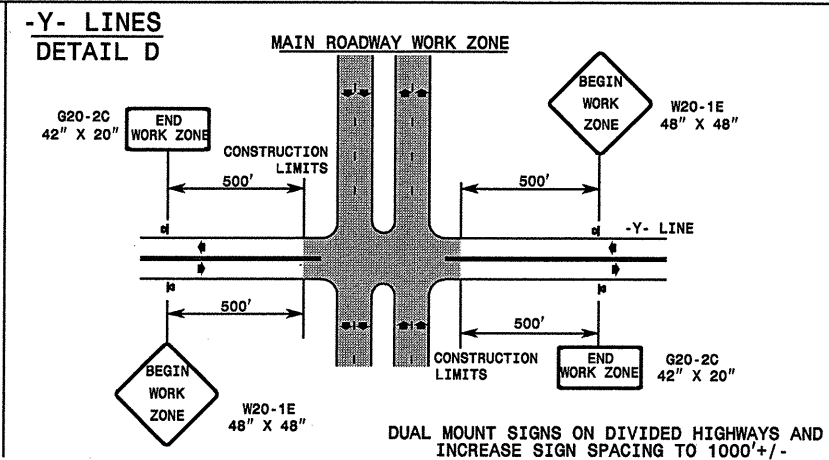
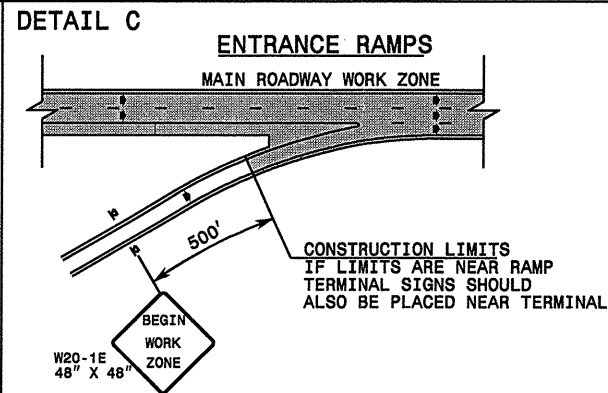


STATE OF NORTH CAROLINA
DEPT. OF TRANSPORTATION
DIVISION OF HIGHWAYS
RALEIGH, N.C.

ROADWAYS INTERSECTING ALONG HIGHWAY WORK ZONE



NOTE:
SIGN NOT REQUIRED IF ADVANCE WARNING SIGNS
HAVE BEEN PLACED ALONG -Y- LINE THAT RAMP
INTERSECTS. IF CONSTRUCTION LIMITS ARE AT
END OF RAMP, PLACE SIGN AT END OF RAMP.



DETAIL DRAWING FOR
INTERSTATE AND FREEWAY
WORK ZONE SIGNS
(SHORT-DURATION LANE CLOSURES)

GENERAL NOTES

- DO NOT INSTALL ADVANCE WARNING SIGNS MORE THAN 3 DAYS PRIOR TO BEGINNING OF WORK.
- ALL SIGN SPACING DIMENSIONS ARE APPROXIMATE, FIELD ADJUST AS NECESSARY OR AS DIRECTED.
- WHEN THERE ARE CONSTRUCTION LIMITS ON A DIVIDED -Y- LINE GREATER THAN 1 MILE IN LENGTH, USE THE SAME SIGNING AS FOR A MAIN ROADWAY WORK ZONE. (SEE DETAIL A)
- USE PORTABLE SIGNS.

LEGEND

⊞	PORTABLE SIGN
➔	DIRECTION OF TRAFFIC FLOW

APPROVED: _____	DATE: _____	DETAIL DRAWING FOR INTERSTATE AND FREEWAY WORK ZONE SIGNS
SEAL		
SCALE: NONE	DATE: 09-06-2001	REVISIONS
DWG. BY: MMM	DESIGN BY: MMM	
REVIEWED BY: _____	FILE	

SHEET 1 OF 1