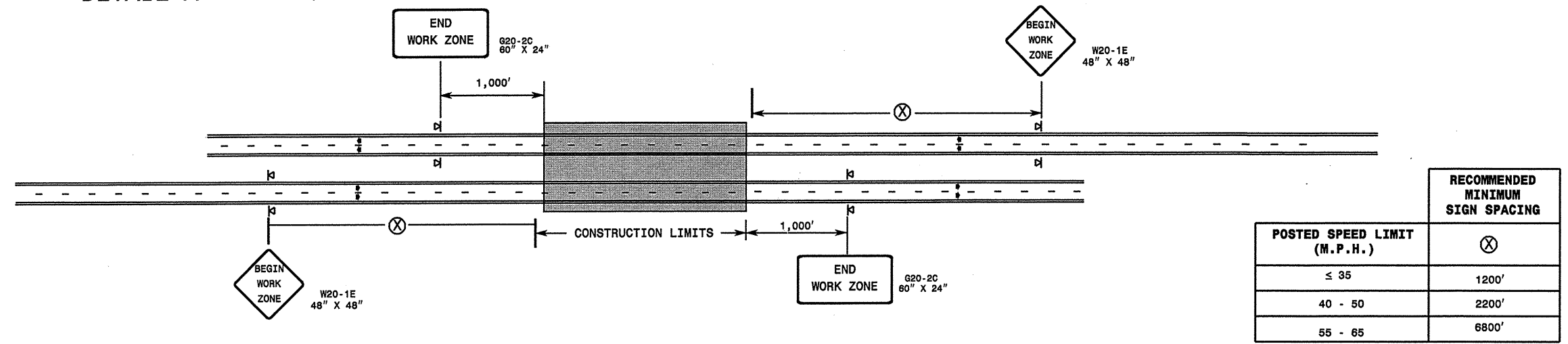
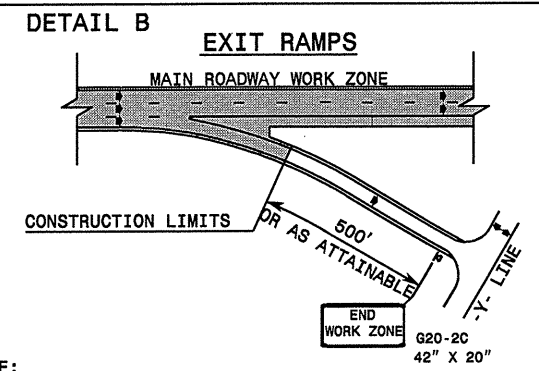


STATE OF NORTH CAROLINA  
DEPT. OF TRANSPORTATION  
DIVISION OF HIGHWAYS  
RALEIGH, N.C.

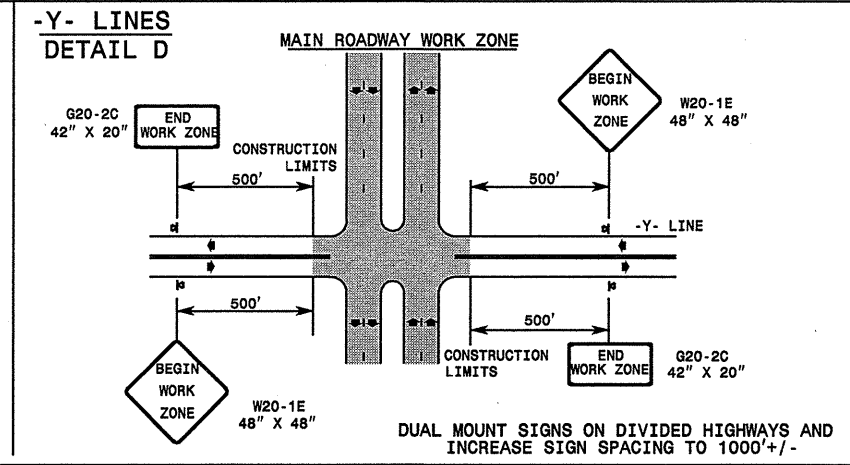
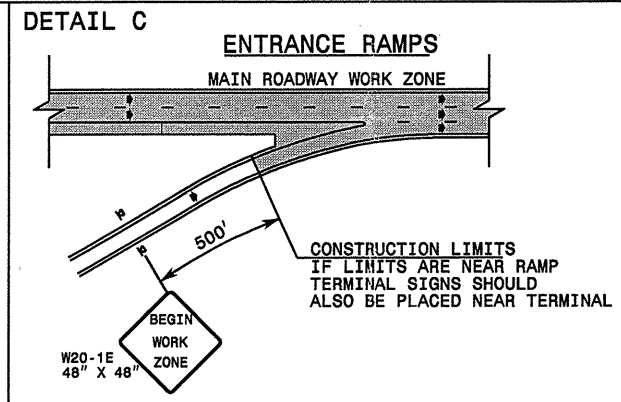
DETAIL A



ROADWAYS INTERSECTING ALONG HIGHWAY WORK ZONE



NOTE:  
SIGN NOT REQUIRED IF ADVANCE WARNING SIGNS HAVE BEEN PLACED ALONG -Y- LINE THAT RAMP INTERSECTS. IF CONSTRUCTION LIMITS ARE AT END OF RAMP, PLACE SIGN AT END OF RAMP.



GENERAL NOTES

- DO NOT INSTALL ADVANCE WARNING SIGNS MORE THAN 3 DAYS PRIOR TO BEGINNING OF WORK.
- ALL SIGN SPACING DIMENSIONS ARE APPROXIMATE, FIELD ADJUST AS NECESSARY OR AS DIRECTED.
- WHEN THERE ARE CONSTRUCTION LIMITS ON A DIVIDED -Y- LINE GREATER THAN 1 MILE IN LENGTH, USE THE SAME SIGNING AS FOR A MAIN ROADWAY WORK ZONE. (SEE DETAIL A)
- USE PORTABLE SIGNS.

LEGEND

⊞	PORTABLE SIGN
➔	DIRECTION OF TRAFFIC FLOW

DETAIL DRAWING FOR INTERSTATE AND FREEWAY WORK ZONE SIGNS (SHORT-DURATION LANE CLOSURES)

SHEET 1 OF 1

APPROVED: _____	DATE: _____	DETAIL DRAWING FOR INTERSTATE AND FREEWAY WORK ZONE SIGNS										
<table border="1"> <tr> <td>SCALE: NONE</td> <td rowspan="4"> </td> </tr> <tr> <td>DATE: 09-06-2001</td> </tr> <tr> <td>DWG. BY: MMM</td> </tr> <tr> <td>DESIGN BY: MMM</td> </tr> <tr> <td>REVIEWED BY: _____</td> <td> <table border="1"> <tr> <td>REVISIONS</td> </tr> <tr> <td> </td> </tr> <tr> <td> </td> </tr> <tr> <td> </td> </tr> </table> </td> </tr> </table>			SCALE: NONE		DATE: 09-06-2001	DWG. BY: MMM	DESIGN BY: MMM	REVIEWED BY: _____	<table border="1"> <tr> <td>REVISIONS</td> </tr> <tr> <td> </td> </tr> <tr> <td> </td> </tr> <tr> <td> </td> </tr> </table>	REVISIONS		
SCALE: NONE												
DATE: 09-06-2001												
DWG. BY: MMM												
DESIGN BY: MMM												
REVIEWED BY: _____	<table border="1"> <tr> <td>REVISIONS</td> </tr> <tr> <td> </td> </tr> <tr> <td> </td> </tr> <tr> <td> </td> </tr> </table>	REVISIONS										
REVISIONS												