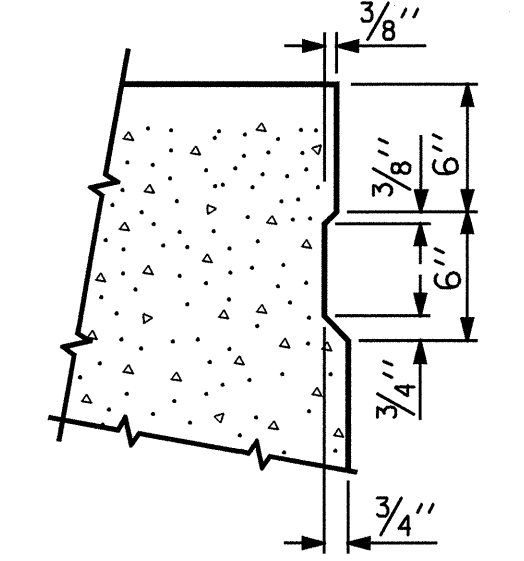
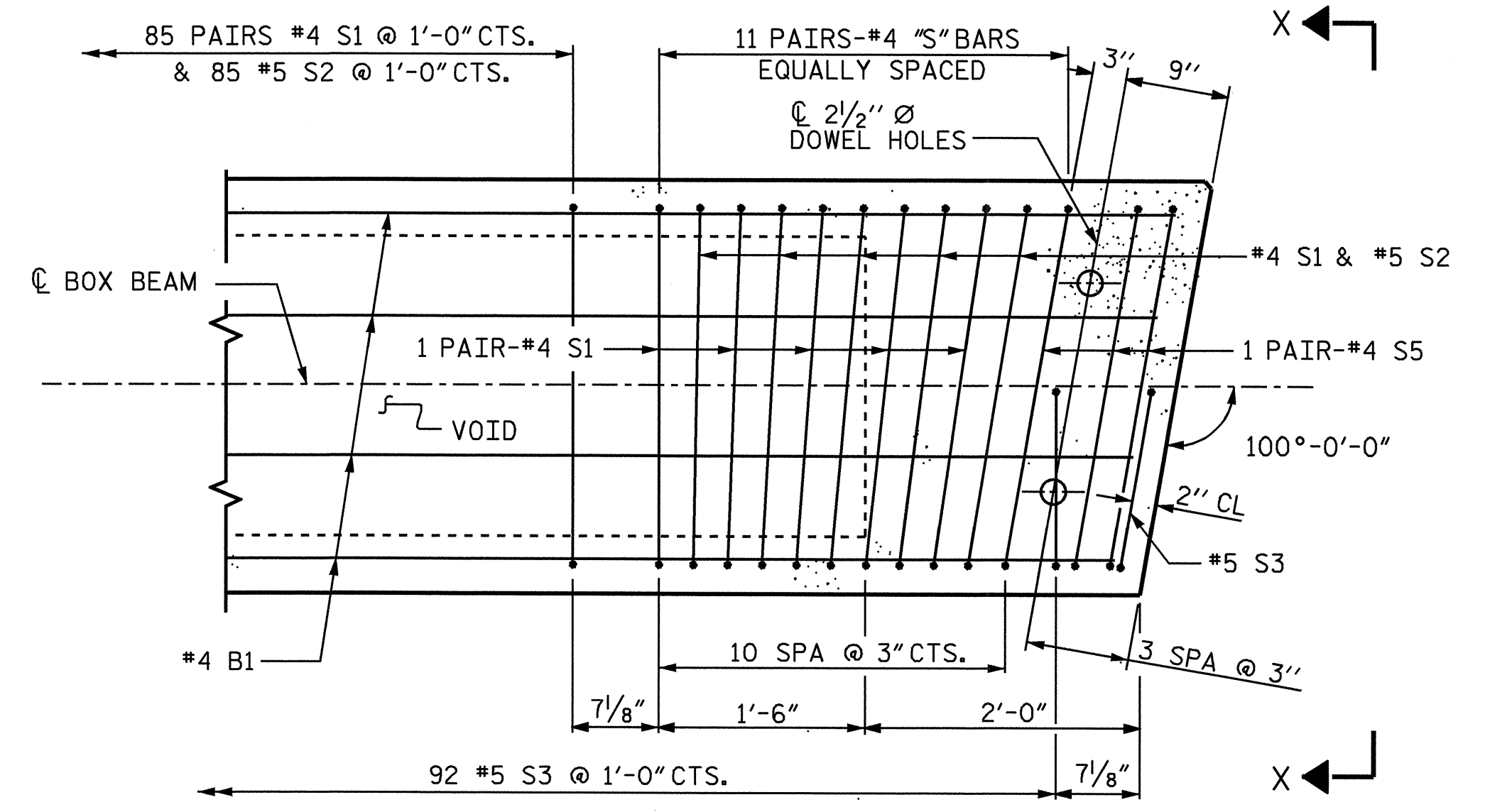


TYPICAL SECTION

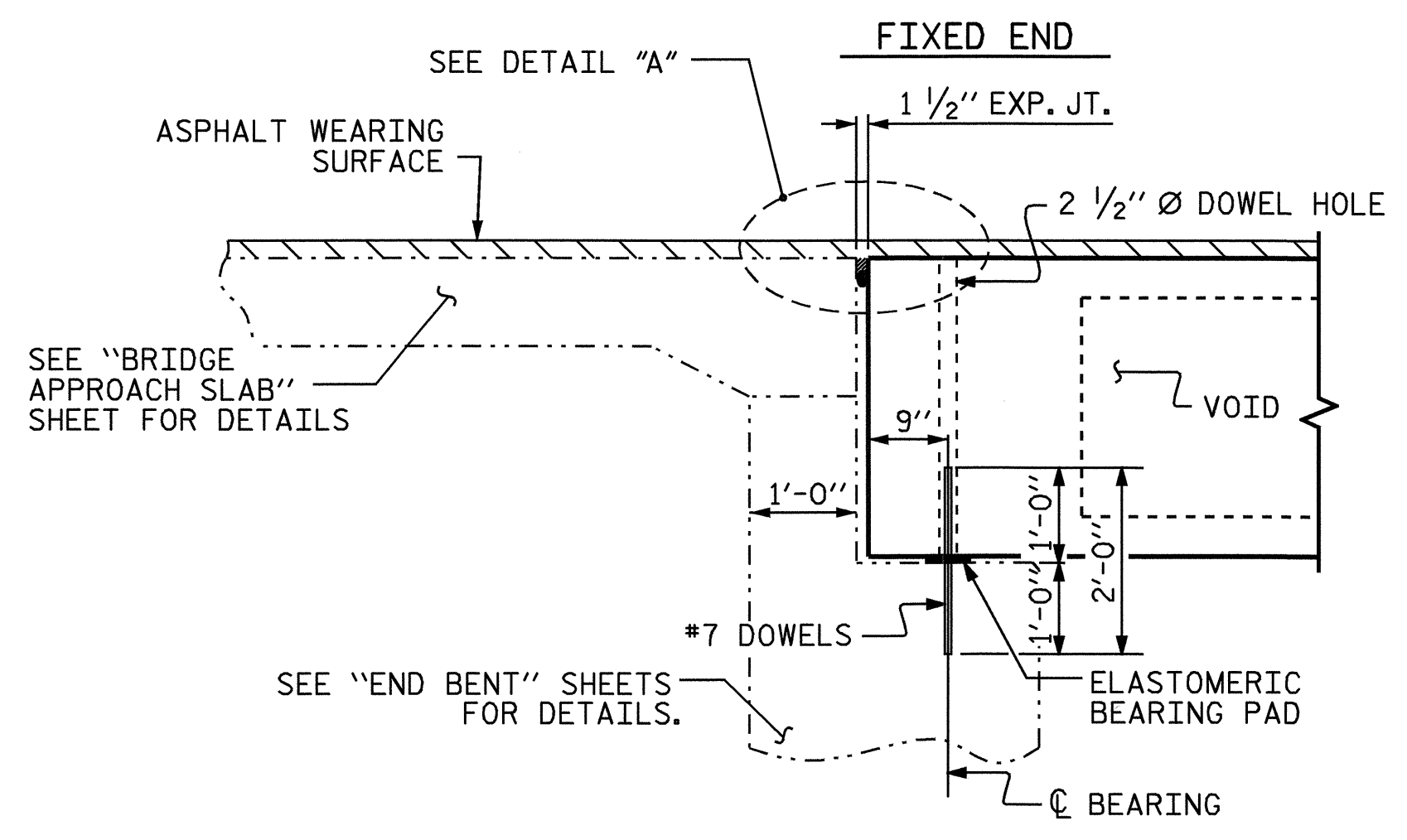


SHEAR KEY DETAIL
NOTE: OMIT SHEAR KEY ON OUTSIDE FACE OF EXTERIOR BOX BEAM.

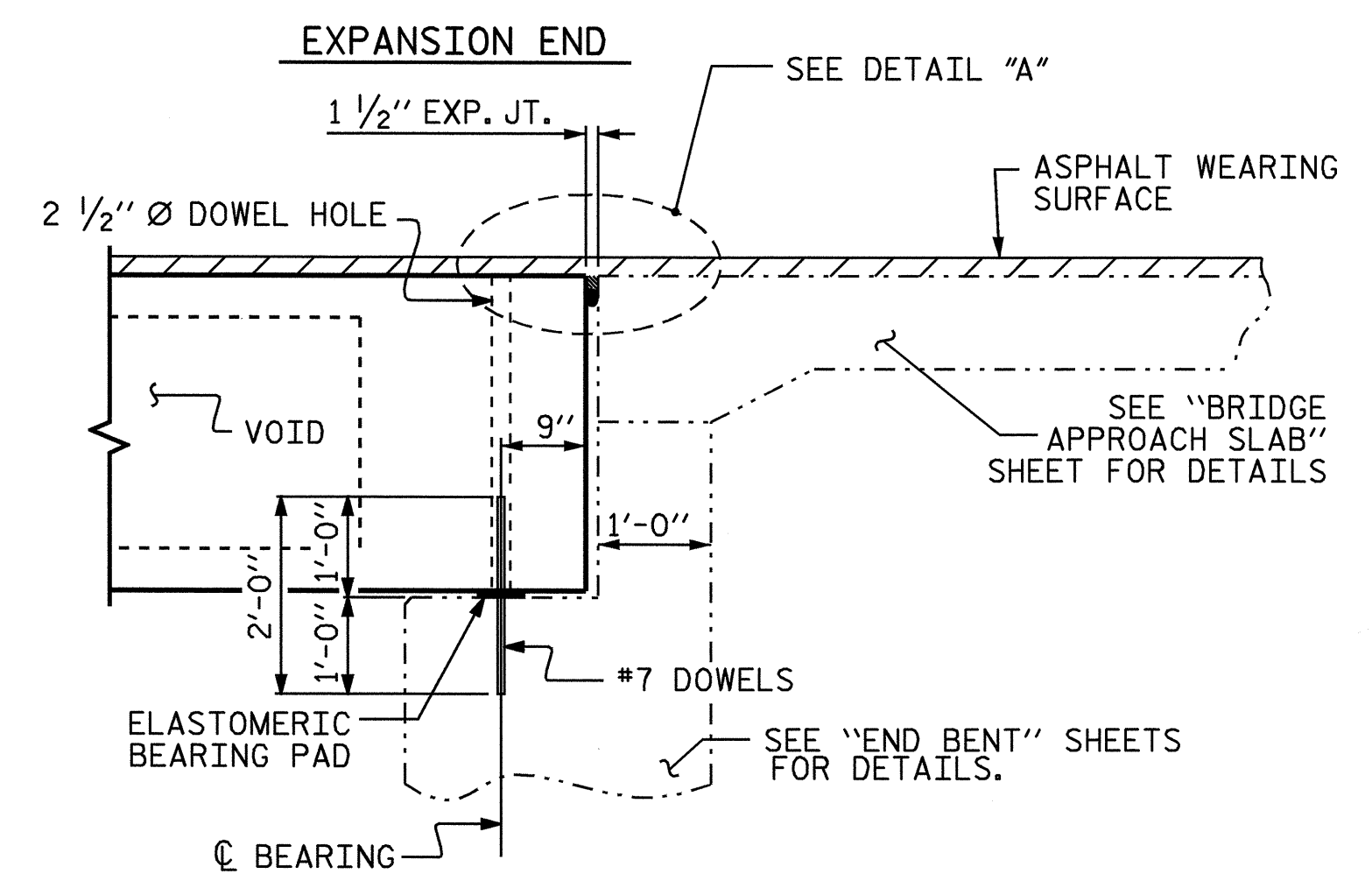


TYPICAL END BLOCK - EXTERIOR SECTION

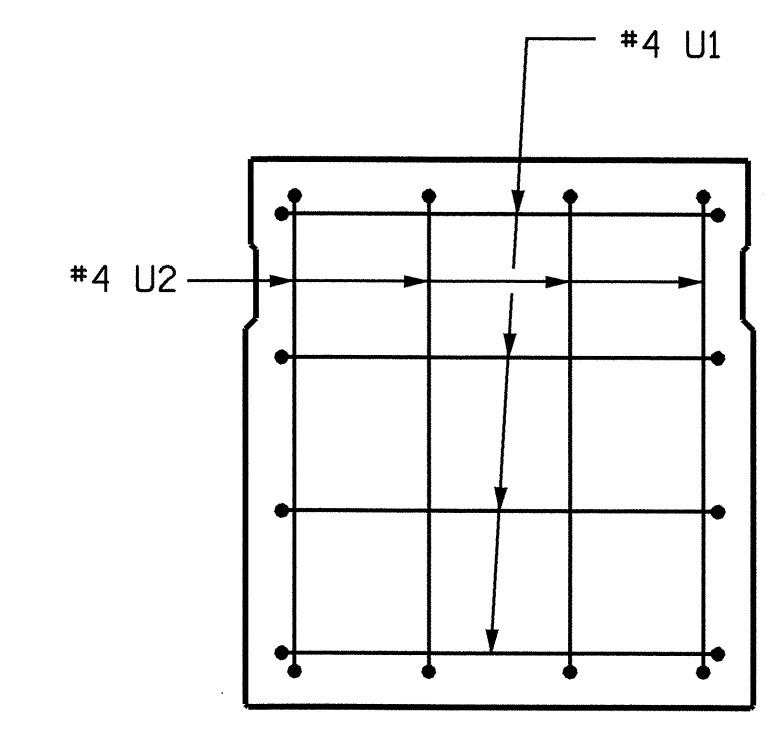
NOTE: EXTERIOR SECTION SHOWN-INTERIOR SECTION SIMILAR EXCEPT OMIT S3 BARS. "U" BARS NOT SHOWN FOR CLARITY



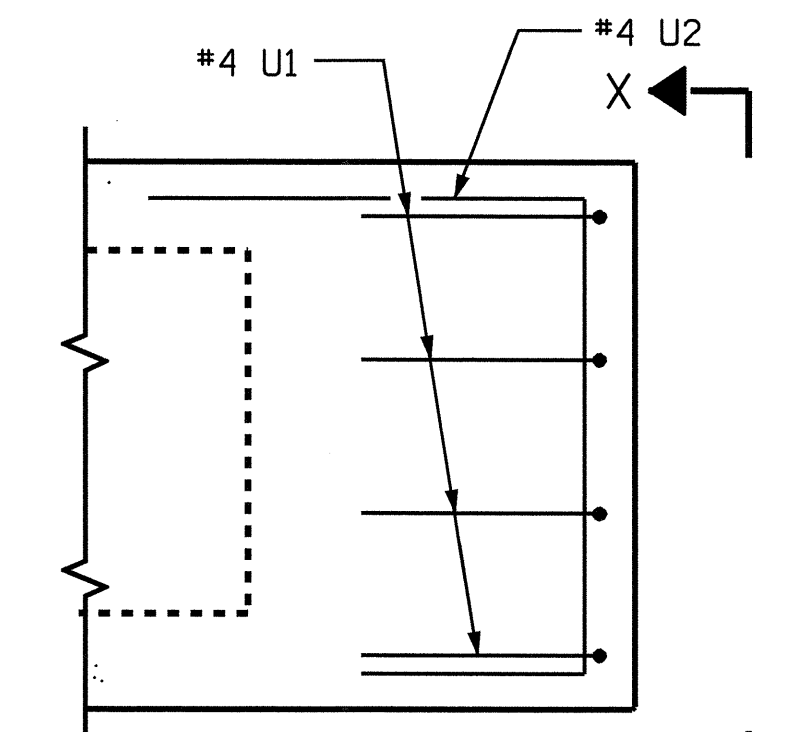
SECTION AT END BENT 1



SECTION AT END BENT 2

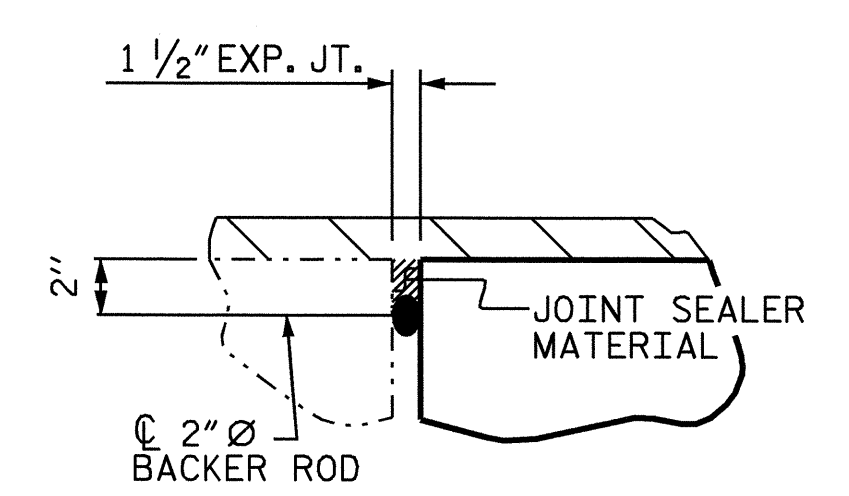


VIEW X-X

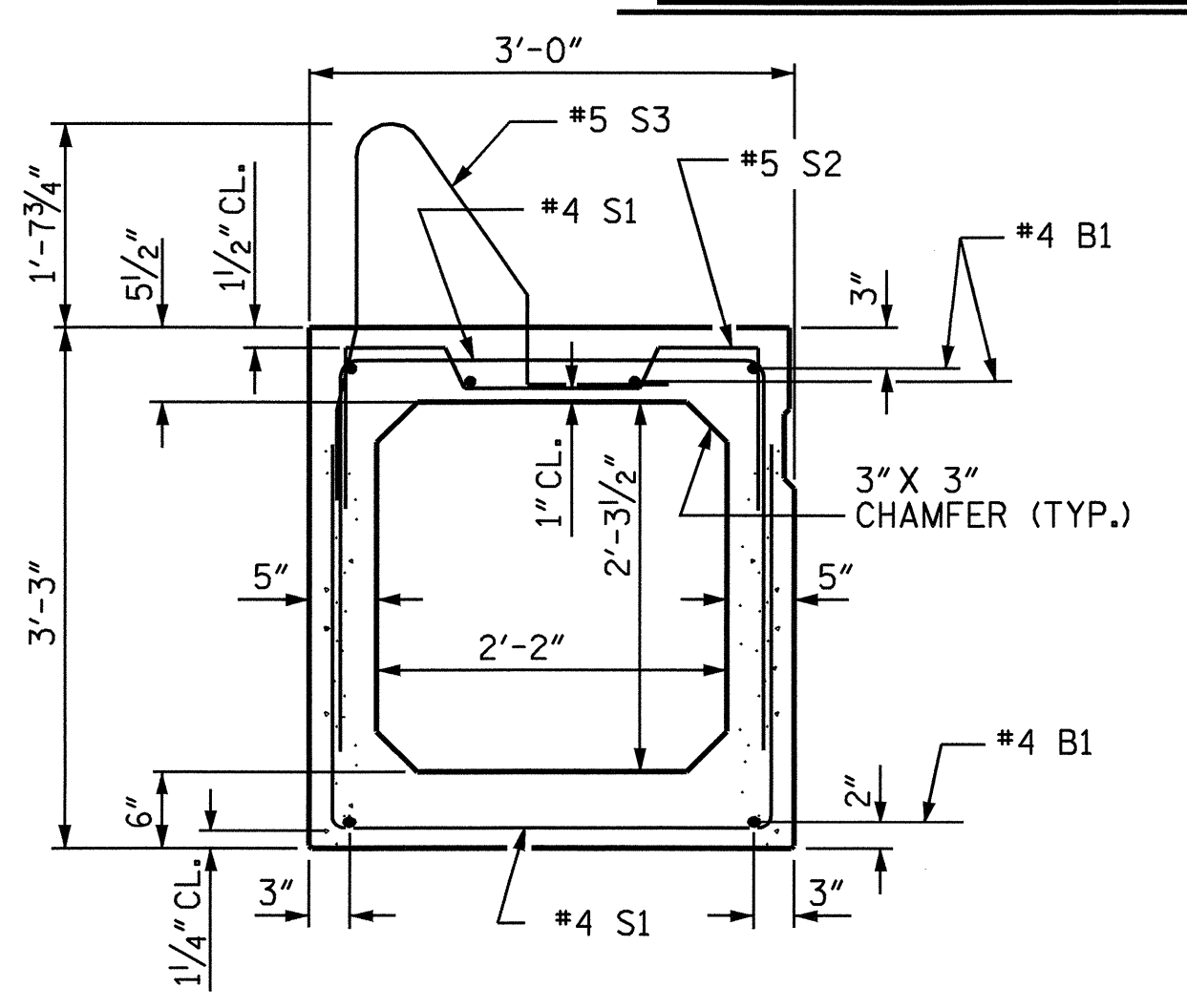


ELEVATION

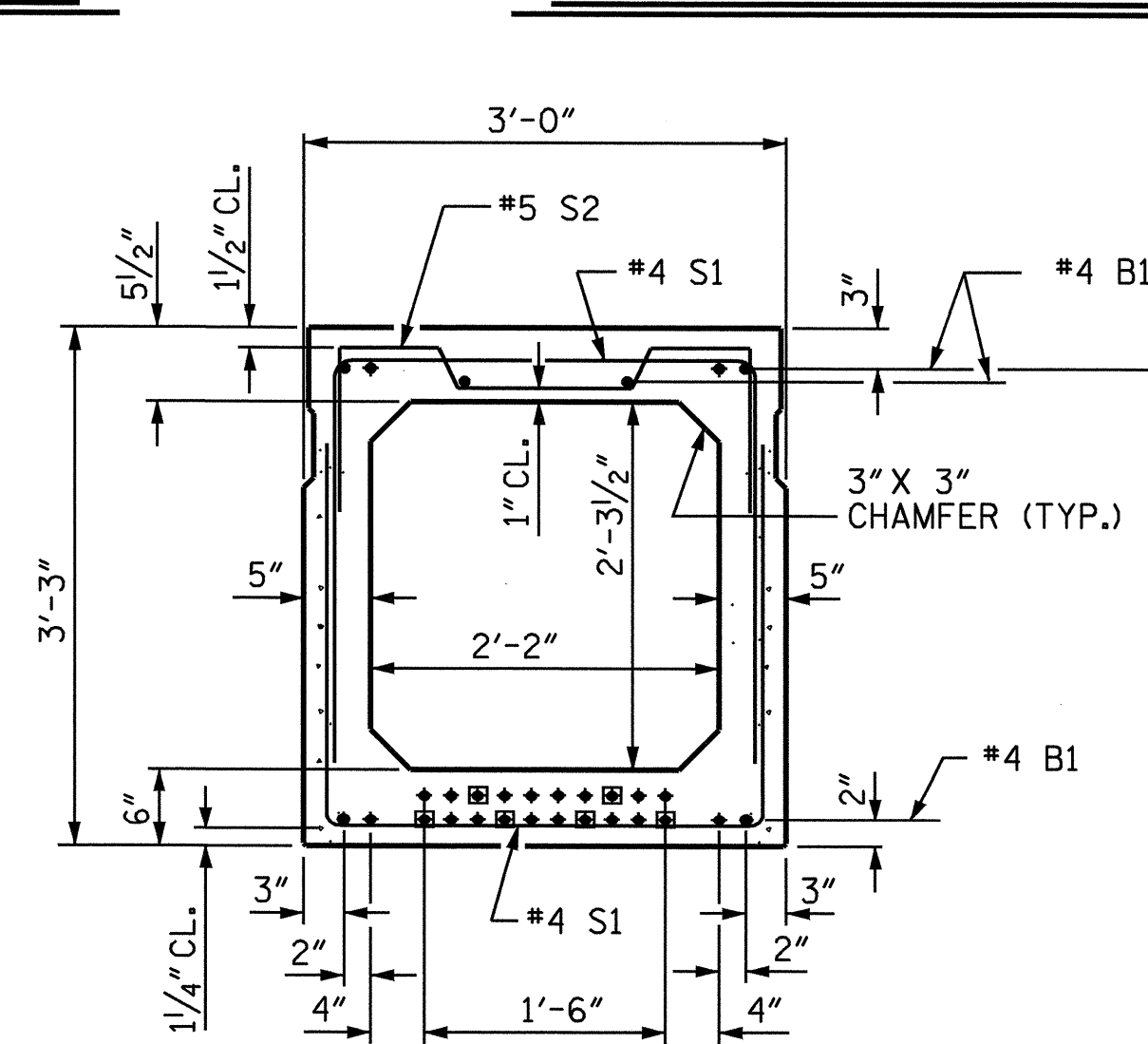
END OF BOX BEAM DETAIL



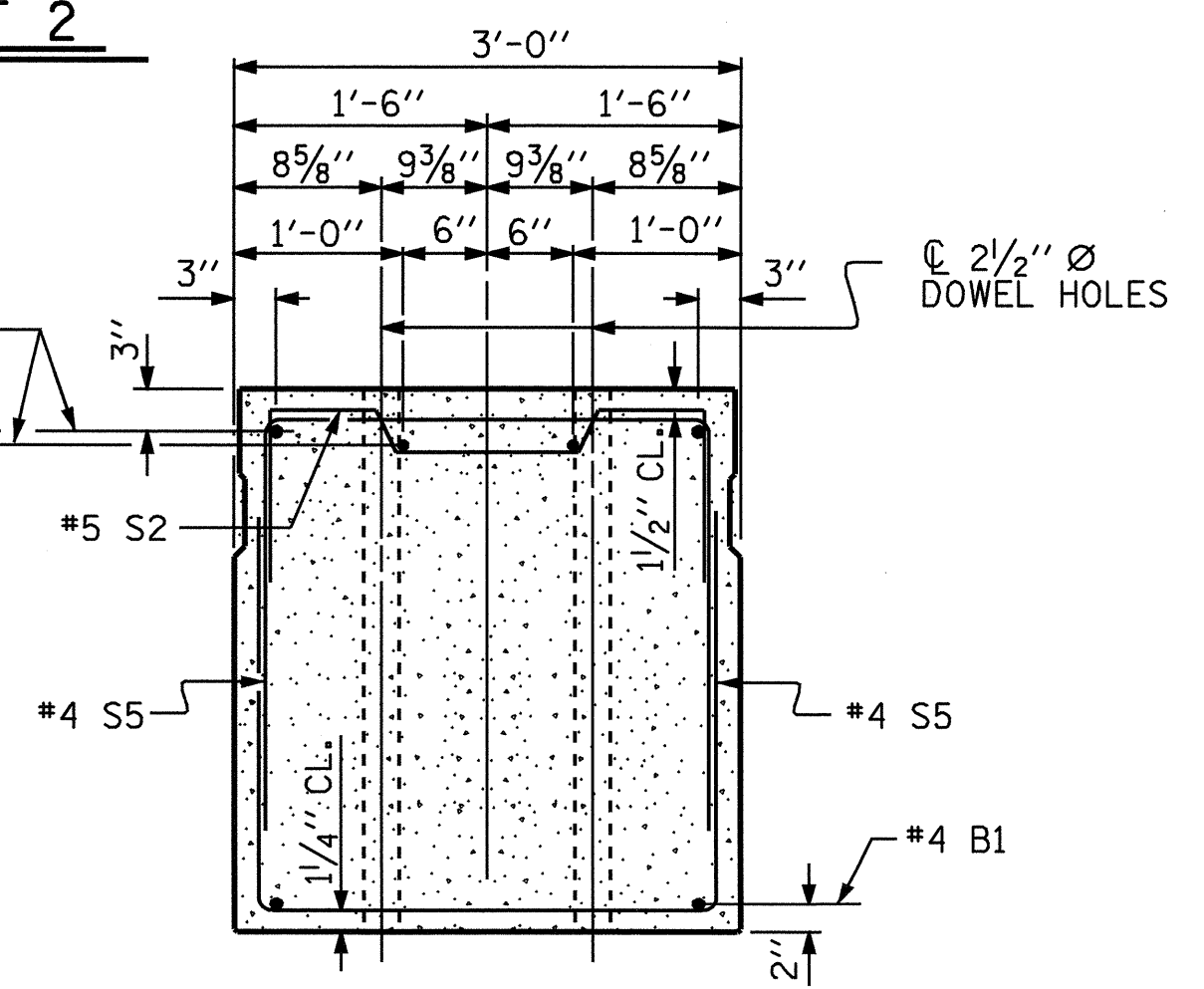
DETAIL A



EXTERIOR BOX BEAM SECTION
(FOR PRESTRESSED STRAND LAYOUT, SEE INTERIOR BOX BEAM SECTION.)



INTERIOR BOX BEAM SECTION
(24 STRANDS REQUIRED)



END ELEVATION

SHOWING PLACEMENT OF STIRRUP AND LOCATION OF DOWEL HOLES (STRAND LAYOUT NOT SHOWN)
INTERIOR BOX BEAM SHOWN-EXTERIOR BOX BEAM SIMILAR EXCEPT SHEAR KEY LOCATION.

0.6" Ø LOW RELAXATION STRAND LAYOUT

■ BOND SHOULD BE BROKEN AT THESE STRANDS AT A DISTANCE OF 5'-0" FROM THE END OF BOX BEAM. SEE STANDARD SPECIFICATION ARTICLE 1078-7.

PROJECT NO. B-3696
ROCKINGHAM COUNTY
STATION: 17+87.50 -L-

SHEET 1 OF 2

STATE OF NORTH CAROLINA DEPARTMENT OF TRANSPORTATION RALEIGH						SHEET NO. S-4
3'-0" x 3'-3" PRESTRESSED CONCRETE BOX BEAM						
REVISIONS						
NO.	BY:	DATE:	NO.	BY:	DATE:	TOTAL SHEETS
1			3			18
2			4			



DRAWN BY : T. H. FANG
CHECKED BY : W. K. FISCHER
DATE : 4/5/04
DATE : 4/20/04

27-AUG-2004 14:35
W:\SquadM\3696\tfang\Microstation\b3696sup.dgn
tfang