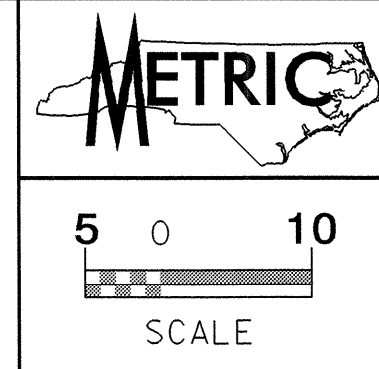


UTILITY NOTES

ALL WATER LINES TO BE RELOCATED ON SHEETS UC-2 THRU UC-5 ARE OWNED BY THE ROBESON COUNTY PUBLIC WORKS. SHUTDOWNS OF WATER SERVICES FOR UTILITY CONSTRUCTION SHALL BE COORDINATED WITH ROBESON COUNTY PUBLIC WORKS. SEE UTILITY SPECIAL PROVISIONS.

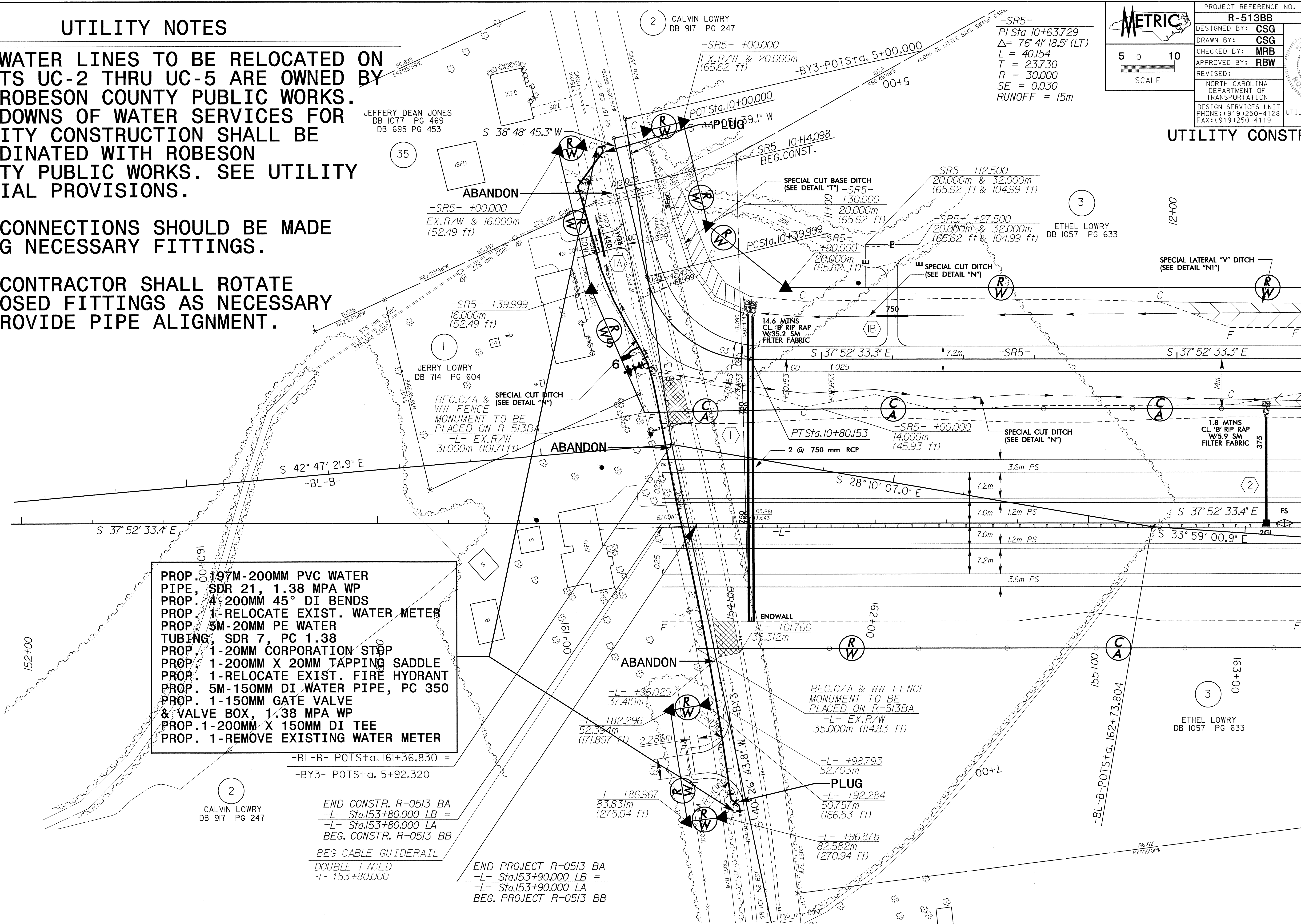
ALL CONNECTIONS SHOULD BE MADE USING NECESSARY FITTINGS.

THE CONTRACTOR SHALL ROTATE PROPOSED FITTINGS AS NECESSARY TO PROVIDE PIPE ALIGNMENT.



PROJECT REFERENCE NO.	SHEET NO.
R-513BB	UC-2
DESIGNED BY: CSG	
DRAWN BY: CSG	
CHECKED BY: MRB	
APPROVED BY: RBW	
REVISED:	
NORTH CAROLINA DEPARTMENT OF TRANSPORTATION DESIGN SERVICES UNIT PHONE: (919) 250-4128 FAX: (919) 250-4119 UTILITY CONSTRUCTION PLANS ONLY	

UTILITY CONSTRUCTION



- PROP. 1-197M-200MM PVC WATER PIPE, SDR 21, 1.38 MPA WP
- PROP. 4-200MM 45° DI BENDS
- PROP. 1-RELOCATE EXIST. WATER METER
- PROP. 5M-20MM PE WATER TUBING, SDR 7, PC 1.38
- PROP. 1-20MM CORPORATION STOP
- PROP. 1-200MM X 20MM TAPPING SADDLE
- PROP. 1-RELOCATE EXIST. FIRE HYDRANT
- PROP. 5M-150MM DI WATER PIPE, PC 350
- PROP. 1-150MM GATE VALVE & VALVE BOX, 1.38 MPA WP
- PROP. 1-200MM X 150MM DI TEE
- PROP. 1-REMOVE EXISTING WATER METER

END CONSTR. R-0513 BA
 -L- Sta. 153+80.000 LB =
 -L- Sta. 153+80.000 LA
 BEG. CONSTR. R-0513 BB
 BEG. CABLE GUIDERAIL
 DOUBLE FACED
 -L- 153+80.000

END PROJECT R-0513 BA
 -L- Sta. 153+90.000 LB =
 -L- Sta. 153+90.000 LA
 BEG. PROJECT R-0513 BB

MATCHLINE -L- STA 155 + 60.000

24-FEB-2004 09:41 R:\Projects\2004\08-41\153\153BB\153BB04.dwg 153BB04.dwg