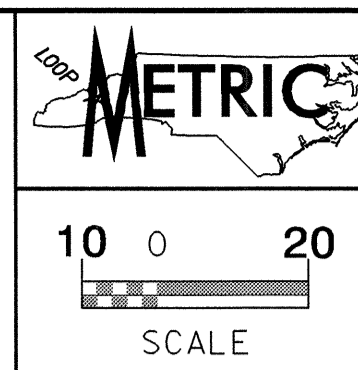
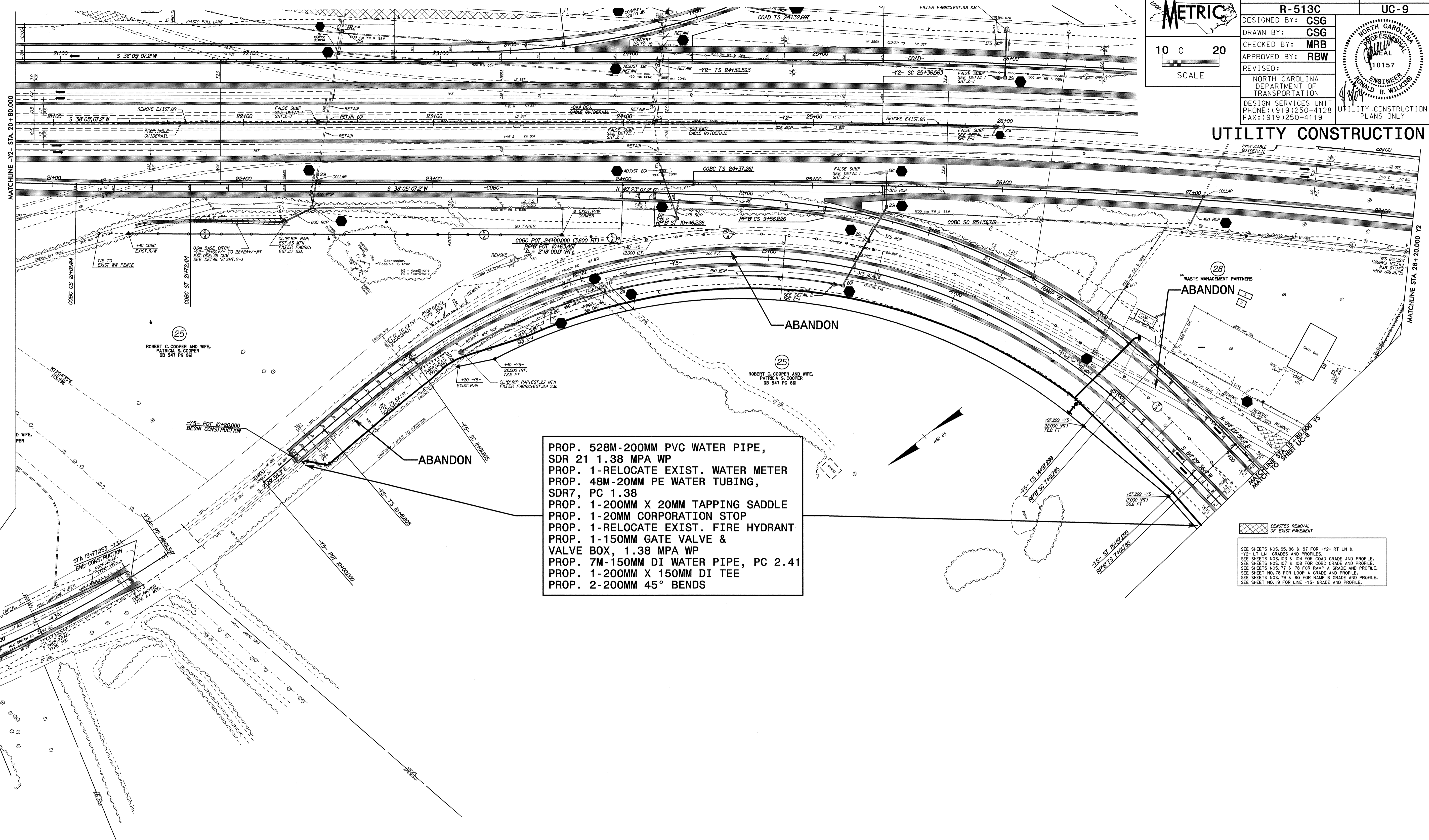


0421897



PROJECT REFERENCE NO.	SHEET NO.
<b>R-513C</b>	<b>UC-9</b>
DESIGNED BY: <b>CSG</b>	
DRAWN BY: <b>CSG</b>	
CHECKED BY: <b>MRB</b>	
APPROVED BY: <b>RBW</b>	
REVISED:	
NORTH CAROLINA DEPARTMENT OF TRANSPORTATION DESIGN SERVICES UNIT PHONE: (919)250-4128 FAX: (919)250-4119	

### UTILITY CONSTRUCTION



- PROP. 528M-200MM PVC WATER PIPE, SDR 21 1.38 MPA WP
- PROP. 1-RELOCATE EXIST. WATER METER
- PROP. 48M-20MM PE WATER TUBING, SDR7, PC 1.38
- PROP. 1-200MM X 20MM TAPPING SADDLE
- PROP. 1-20MM CORPORATION STOP
- PROP. 1-RELOCATE EXIST. FIRE HYDRANT
- PROP. 1-150MM GATE VALVE & VALVE BOX, 1.38 MPA WP
- PROP. 7M-150MM DI WATER PIPE, PC 2.41
- PROP. 1-200MM X 150MM DI TEE
- PROP. 2-200MM 45° BENDS

DENOTES REMOVAL OF EXIST. PAVEMENT  
 SEE SHEETS NOS. 95, 96 & 97 FOR -Y2- RT LN & -Y2- LT LN GRADES AND PROFILES.  
 SEE SHEETS NOS. 103 & 104 FOR COAD GRADE AND PROFILE.  
 SEE SHEETS NOS. 107 & 108 FOR COBC GRADE AND PROFILE.  
 SEE SHEETS NOS. 77 & 78 FOR RAMP A GRADE AND PROFILE.  
 SEE SHEET NO. 79 FOR LOOP A GRADE AND PROFILE.  
 SEE SHEETS NOS. 79 & 80 FOR RAMP B GRADE AND PROFILE.  
 SEE SHEET NO. 89 FOR LINE -Y5- GRADE AND PROFILE.

12-JUL-2004 16:27  
D:\proj\11191\080511\11191\11191.dwg  
UC9R513C37.P5H