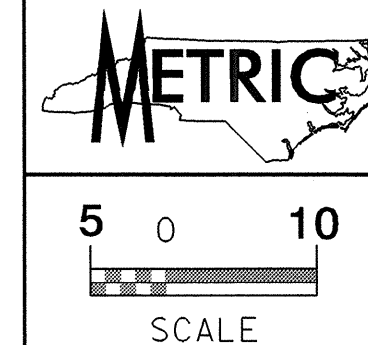


REVISIONS

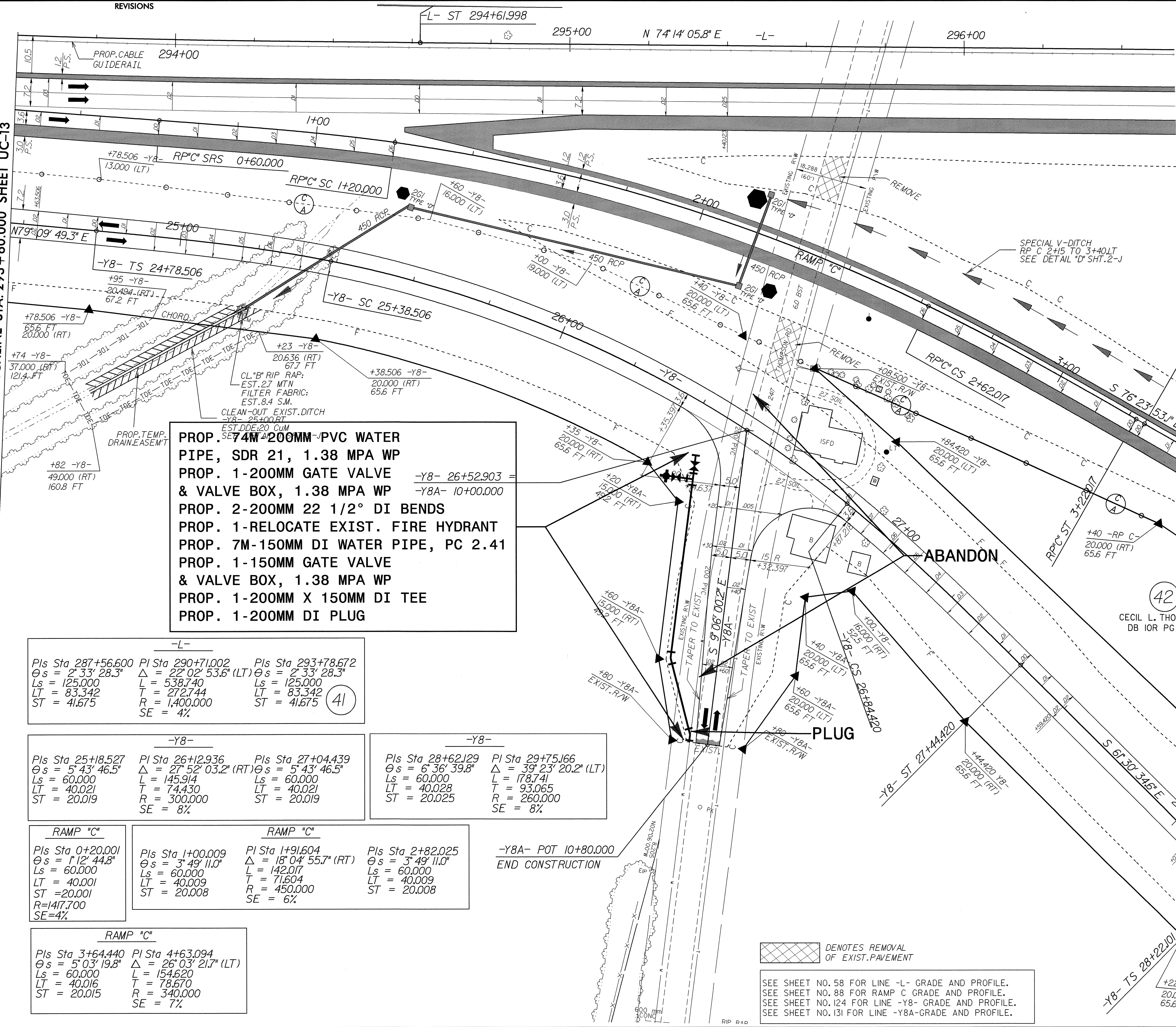


PROJECT REFERENCE NO.	SHEET NO.
R-513C	UC-14
DESIGNED BY: CSG	
DRAWN BY: CSG	
CHECKED BY: MRB	
APPROVED BY: RBW	
REVISER:	
NORTH CAROLINA DEPARTMENT OF TRANSPORTATION	
DESIGN SERVICES UNIT PHONE: (919) 250-4128 FAX: (919) 250-4119	
UTILITY CONSTRUCTION PLANS ONLY	

UTILITY CONSTRUCTION

MATCHLINE STA. 293 + 60.000 SHEET UC-13

MATCHLINE STA. 297 + 20.000 SHEET UC-15



PROP. 74M 200MM PVC WATER PIPE, SDR 21, 1.38 MPA WP
PROP. 1-200MM GATE VALVE & VALVE BOX, 1.38 MPA WP
PROP. 2-200MM 22 1/2° DI BENDS
PROP. 1-RELOCATE EXIST. FIRE HYDRANT
PROP. 7M-150MM DI WATER PIPE, PC 2.41
PROP. 1-150MM GATE VALVE & VALVE BOX, 1.38 MPA WP
PROP. 1-200MM X 150MM DI TEE
PROP. 1-200MM DI PLUG

-L-		
Pls Sta 287+56.600 θs = 2° 33' 28.3" Ls = 125.000 LT = 83.342 ST = 41.675	Pls Sta 290+71.002 Δ = 22° 02' 53.6" (LT) L = 538.740 T = 272.744 R = 1,400.000 SE = 4%	Pls Sta 293+78.672 θs = 2° 33' 28.3" Ls = 125.000 LT = 83.342 ST = 41.675

-Y8-		
Pls Sta 25+18.527 θs = 5° 43' 46.5" Ls = 60.000 LT = 40.021 ST = 20.019	Pls Sta 26+12.936 Δ = 27° 52' 03.2" (RT) L = 145.914 T = 74.430 R = 300.000 SE = 8%	Pls Sta 27+04.439 θs = 5° 43' 46.5" Ls = 60.000 LT = 40.021 ST = 20.019

-Y8-	
Pls Sta 28+62.129 θs = 6° 36' 39.8" Ls = 60.000 LT = 40.028 ST = 20.025	Pls Sta 29+75.166 Δ = 39° 23' 20.2" (LT) L = 178.741 T = 93.065 R = 260.000 SE = 8%

RAMP "C"	
Pls Sta 0+20.001 θs = 1° 12' 44.8" Ls = 60.000 LT = 40.001 ST = 20.001 R = 147.700 SE = 4%	Pls Sta 1+00.009 θs = 3° 49' 11.0" Ls = 60.000 LT = 40.009 ST = 20.008

RAMP "C"	
Pls Sta 1+91.604 Δ = 18° 04' 55.7" (RT) L = 142.017 T = 71.604 R = 450.000 SE = 6%	Pls Sta 2+82.025 θs = 3° 49' 11.0" Ls = 60.000 LT = 40.009 ST = 20.008

RAMP "C"	
Pls Sta 3+64.440 θs = 5° 03' 19.8" Ls = 60.000 LT = 40.016 ST = 20.015	Pls Sta 4+63.094 Δ = 26° 03' 21.7" (LT) L = 154.620 T = 78.670 R = 340.000 SE = 7%

DENOTES REMOVAL OF EXIST. PAVEMENT

SEE SHEET NO. 58 FOR LINE -L- GRADE AND PROFILE.
 SEE SHEET NO. 88 FOR RAMP C GRADE AND PROFILE.
 SEE SHEET NO. 124 FOR LINE -Y8- GRADE AND PROFILE.
 SEE SHEET NO. 131 FOR LINE -Y8A- GRADE AND PROFILE.

TGS ENGINEERS
 975 WALNUT STREET, SUITE 141
 CARY, NC 27511
 PH (919) 319-8850

THIS DOCUMENT ORIGINALLY ISSUED AND SEALED BY CHARLES LEE FLOWE, PE #12300, NOVEMBER 16, 2001

THIS DOCUMENT ORIGINALLY ISSUED AND SEALED BY WILLIAM T. STEPHENS, JR., PE #20754, NOVEMBER 16, 2001

THIS MEDIA SHALL NOT BE CONSIDERED A CERTIFIED DOCUMENT.