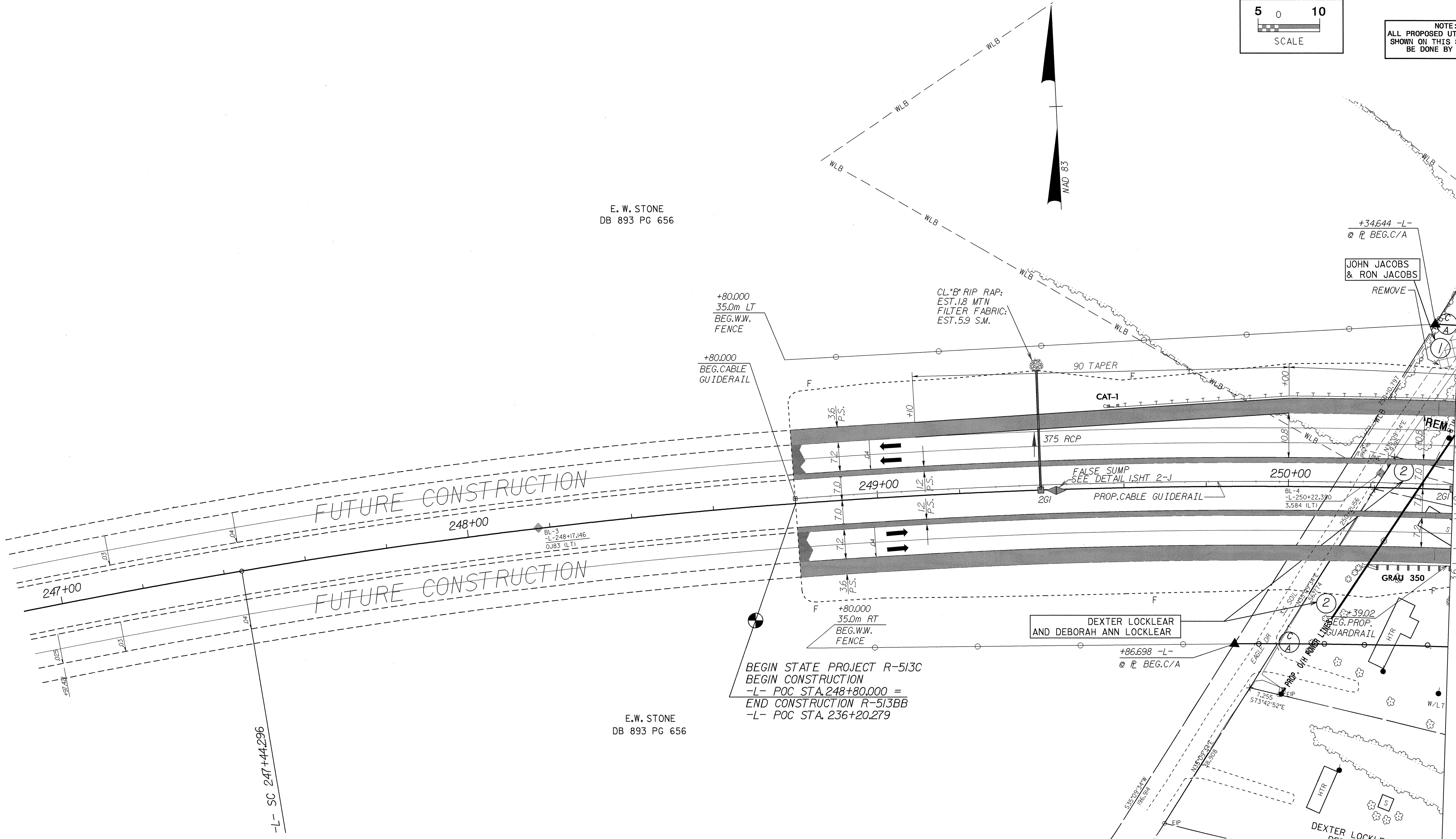


NOTE:
 ALL PROPOSED UTILITY WORK
 SHOWN ON THIS SHEET WILL
 BE DONE BY OTHERS

E. W. STONE
 DB 893 PG 656

E.W. STONE
 DB 893 PG 656

MATCHLINE STA. 250+40.00 MATCH TO SHT. U0-2



DATUM DESCRIPTION
 THE LOCALIZED COORDINATE SYSTEM DEVELOPED FOR THIS PROJECT IS BASED ON THE STATE PLANE COORDINATES ESTABLISHED BY THE NORTH CAROLINA GEODETIC SURVEY FOR MONUMENT "WYE 1977" WITH NAD 83 STATE PLANE GRID COORDINATES OF NORTHING 103917.867 (m) EASTING 585865.569 (m) THE AVERAGE COMBINED GRID FACTOR USED ON THIS PROJECT (GROUND TO GRID) IS: 0.99992600 THE N.C. LAMBERT GRID BEARING AND LOCALIZED HORIZONTAL GROUND DISTANCE FROM "WYE 1977" TO "L-POC STATION 248+80.000 IS S 47°52' 19.86" E 14,464.742m ALL LINEAR DIMENSIONS ARE LOCALIZED HORIZONTAL DISTANCES VERTICAL DATUM USED IS NAVD 1929

DENOTES REMOVAL OF EXIST. PAVEMENT
 SEE SHEET NO. 52 FOR LINE -L- GRADE AND PROFILE.

04259
 25-FEB-2004 08:28
 R:\Utilities\Projects\R-513C\U0-1\U0-1.dwg
 s:\gobald - at 10:57:46:56