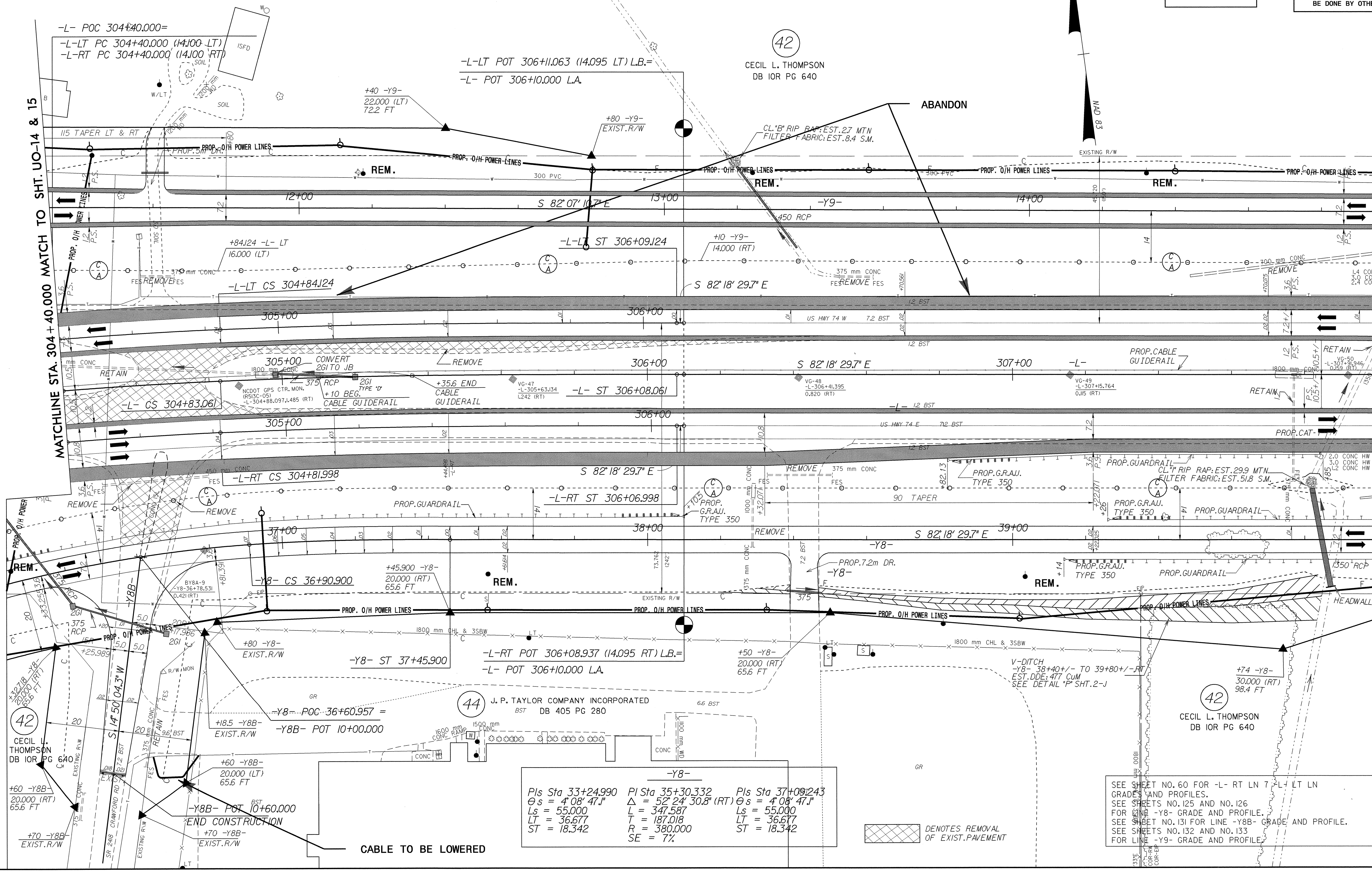


UTILITIES BY OTHERS

NOTE: ALL PROPOSED UTILITY WORK SHOWN ON THIS SHEET WILL BE DONE BY OTHERS

042527  
C:\MS-2004\141\RA\Drawings\141\141R513C\U0-16.dwg  
3/20/04 10:51:46 AM



MATCHLINE STA. 304+40.000 MATCH TO SHT. UO-14 & 15

MATCHLINE STA. 308+00.000 MATCH TO SHT. NO. 21

42

CECIL L. THOMPSON  
DB IOR PG 640

-L-LT POT 306+11.063 (14.095 LT) L.B.=  
-L- POT 306+10.000 L.A.

-L- POC 304+40.000=  
-L-LT PC 304+40.000 (14.100 LT)  
-L-RT PC 304+40.000 (14.100 RT)

-L- ST 306+08.061

-L- CS 304+83.061

-L- ST 306+06.998

-L- RT CS 304+81.998

-Y8- CS 36+90.900

-L-RT POT 306+08.937 (14.095 RT) L.B.=  
-L- POT 306+10.000 L.A.

-Y8- ST 37+45.900

-Y8- POC 36+60.957 =  
-Y8B- POT 10+00.000

-Y8B- POT 10+60.000

44 J. P. TAYLOR COMPANY INCORPORATED  
BST DB 405 PG 280

42  
CECIL L. THOMPSON  
DB IOR PG 640

Pls Sta 33+24.990 θs = 4° 08' 47.1"	Pls Sta 35+30.332 Δ = 52° 24' 30.8" (RT) Ls = 347.587 T = 187.018 R = 380.000 SE = 7%	Pls Sta 37+09.243 θs = 4° 08' 47.1"
----------------------------------------	------------------------------------------------------------------------------------------------------	----------------------------------------

SEE SHEET NO. 60 FOR -L- RT LN 7 -L- LT LN GRADES AND PROFILES.  
SEE SHEETS NO. 125 AND NO. 126 FOR LINE -Y8- GRADE AND PROFILE.  
SEE SHEET NO. 131 FOR LINE -Y8B- GRADE AND PROFILE.  
SEE SHEETS NO. 132 AND NO. 133 FOR LINE -Y9- GRADE AND PROFILE.

□ DENOTES REMOVAL OF EXIST. PAVEMENT

CABLE TO BE LOWERED

END CONSTRUCTION