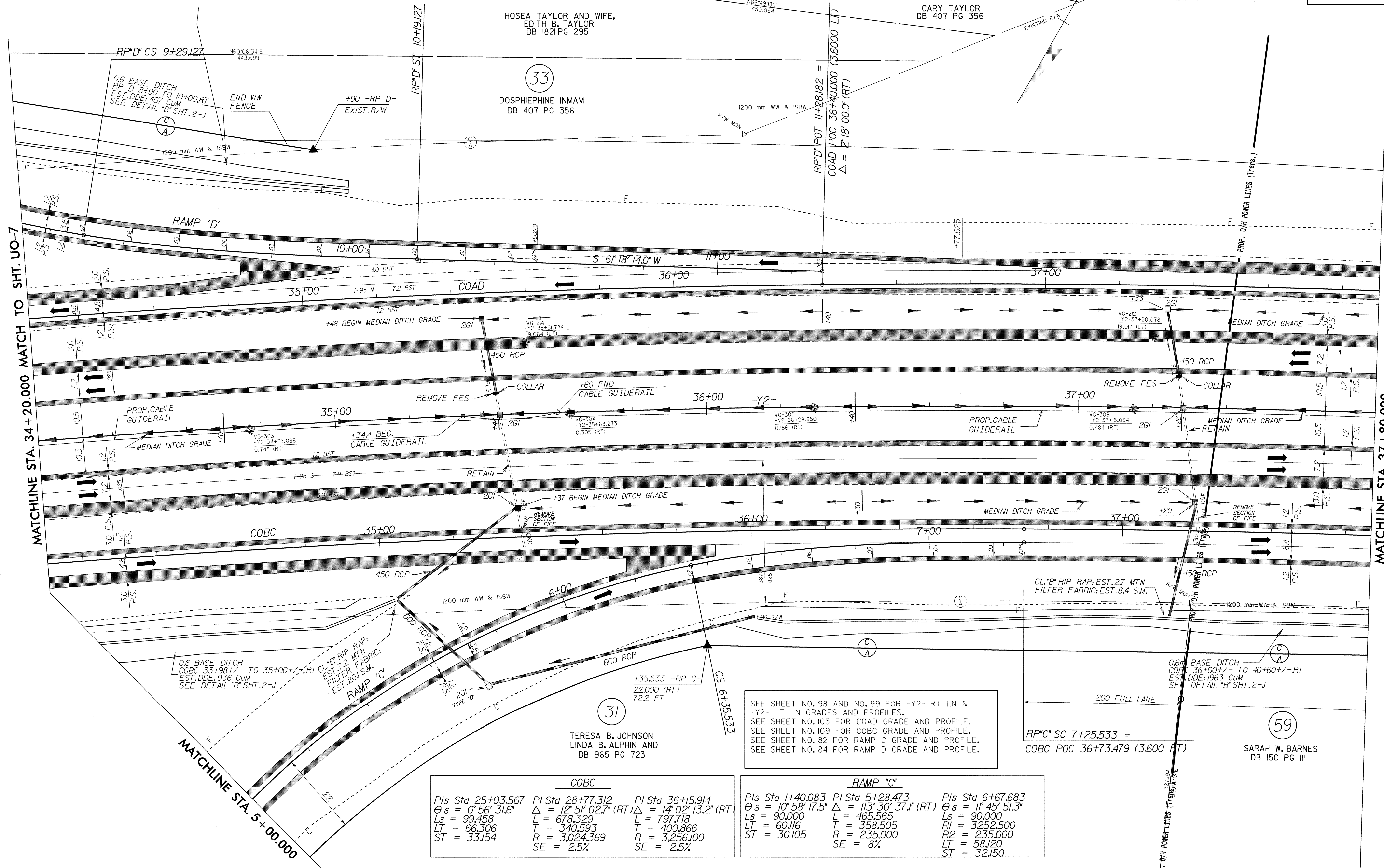


UTILITIES BY OTHERS

NOTE:  
ALL PROPOSED UTILITY WORK  
SHOWN ON THIS SHEET WILL  
BE DONE BY OTHERS



SEE SHEET NO. 98 AND NO. 99 FOR -Y2- RT LN & -Y2- LT LN GRADES AND PROFILES.  
SEE SHEET NO. 105 FOR COAD GRADE AND PROFILE.  
SEE SHEET NO. 109 FOR COBC GRADE AND PROFILE.  
SEE SHEET NO. 82 FOR RAMP C GRADE AND PROFILE.  
SEE SHEET NO. 84 FOR RAMP D GRADE AND PROFILE.

COBC		
Pls Sta 25+03.567	PI Sta 28+77.312	PI Sta 36+15.914
$\theta s = 0^{\circ} 56' 31.6"$	$\Delta = 12^{\circ} 51' 02.7"$ (RT)	$\Delta = 14^{\circ} 02' 13.2"$ (RT)
LS = 99.458	L = 678.329	L = 797.718
LT = 66.306	T = 340.593	T = 400.866
ST = 33.154	R = 3,024.369	R = 3,256.100
	SE = 2.5%	SE = 2.5%

RAMP 'C'		
Pls Sta 1+40.083	PI Sta 5+28.473	Pls Sta 6+67.683
$\theta s = 10^{\circ} 58' 17.5"$	$\Delta = 113^{\circ} 30' 37.1"$ (RT)	$\theta s = 11^{\circ} 45' 51.3"$
LS = 90.000	L = 465.565	LS = 90.000
LT = 60.116	T = 358.505	RI = 3252.500
ST = 30.105	R = 235.000	R2 = 235.000
	SE = 8%	LT = 58.120
		ST = 32.150

042592  
 15-FEB-2004 15:18  
 R:\15-FEB-2004\1518\_P\CO\UO031R513C38.PSH  
 g:\johnson\1518\_P\CO\UO031R513C38.PSH