

-L-
 Pts Sta 202+46.833
 $\theta_s = 2^\circ 51' 53.2''$
 $L_s = 90.000$
 $LT = 60.008$
 $ST = 30.007$
 $SE = 0.064$

METRIC

CONST. REV.
 R/W REV.

PROJECT REFERENCE NO. R-513 BB	SHEET NO. EC-17/CONST.18
R/W SHEET NO.	
ROADWAY DESIGN ENGINEER	HYDRAULICS ENGINEER

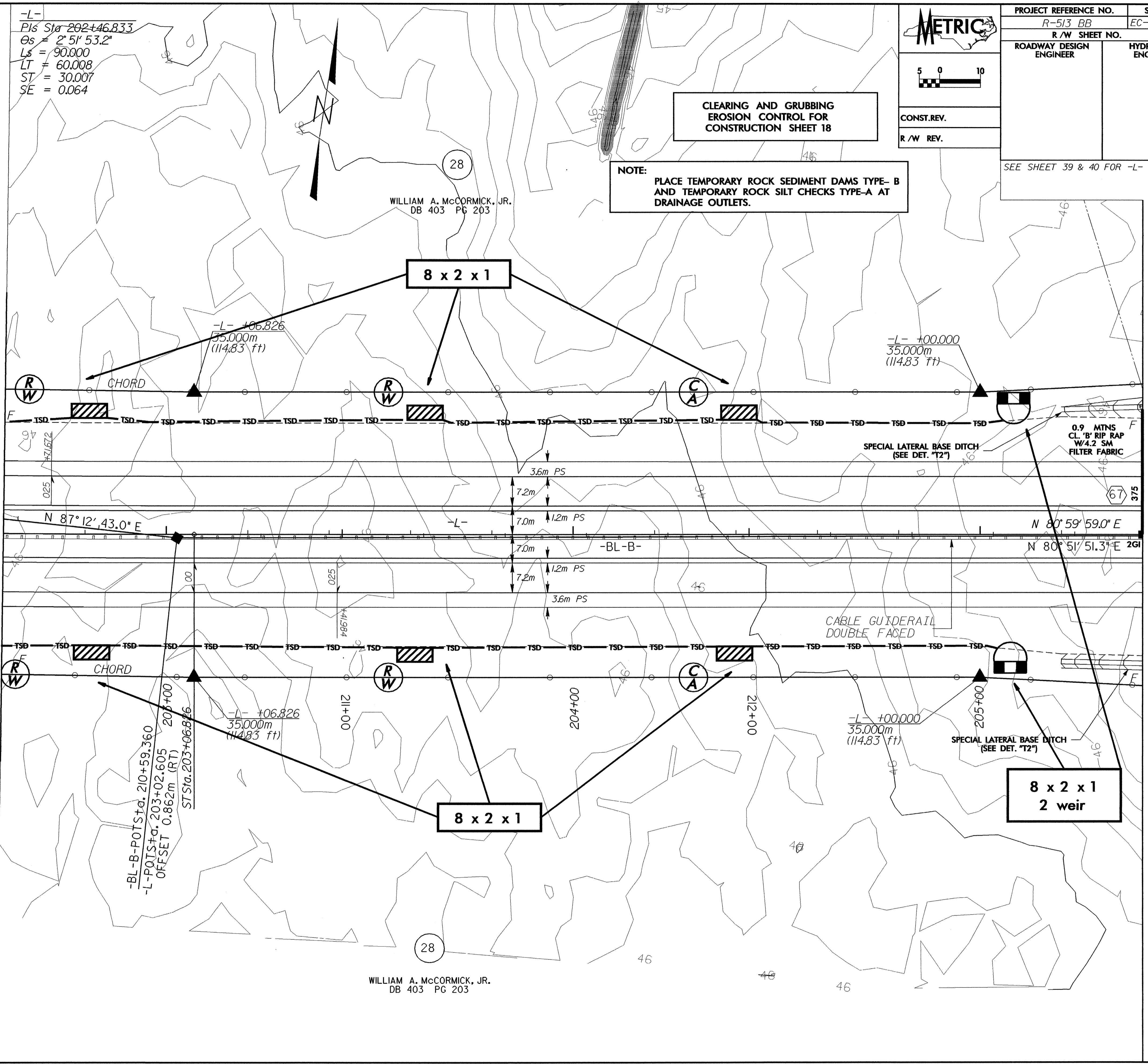
**CLEARING AND GRUBBING
 EROSION CONTROL FOR
 CONSTRUCTION SHEET 18**

**NOTE:
 PLACE TEMPORARY ROCK SEDIMENT DAMS TYPE- B
 AND TEMPORARY ROCK SILT CHECKS TYPE-A AT
 DRAINAGE OUTLETS.**

SEE SHEET 39 & 40 FOR -L- PROFILE

MATCHLINE -L- STA 202+60.000

MATCHLINE -L- STA 205+40.000



WILLIAM A. McCORMICK, JR.
 DB 403 PG 203

WILLIAM A. McCORMICK, JR.
 DB 403 PG 203