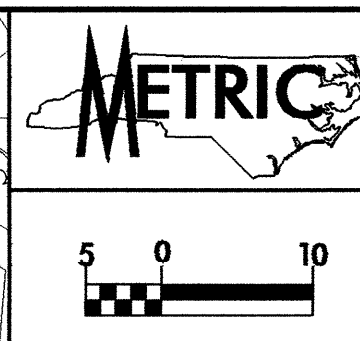


847498

-L-  
 Pts Sta 234+42.916 PI Sta 236+18.177  
 $\theta_s = 2^\circ 23' 14.4''$   $\Delta = 10^\circ 10' 46.5''$  (RT)  
 $L_s = 125.000$   $L = 266.501$   
 $LT = 83.341$   $T = 133.602$   
 $ST = 41.674$   $R = 1,500.000$   
 $SE = 0.04$

**NOTE:**  
 PLACE TEMPORARY ROCK SEDIMENT DAMS TYPE-B  
 AND TEMPORARY ROCK SILT CHECKS TYPE-A AT  
 DRAINAGE OUTLETS.

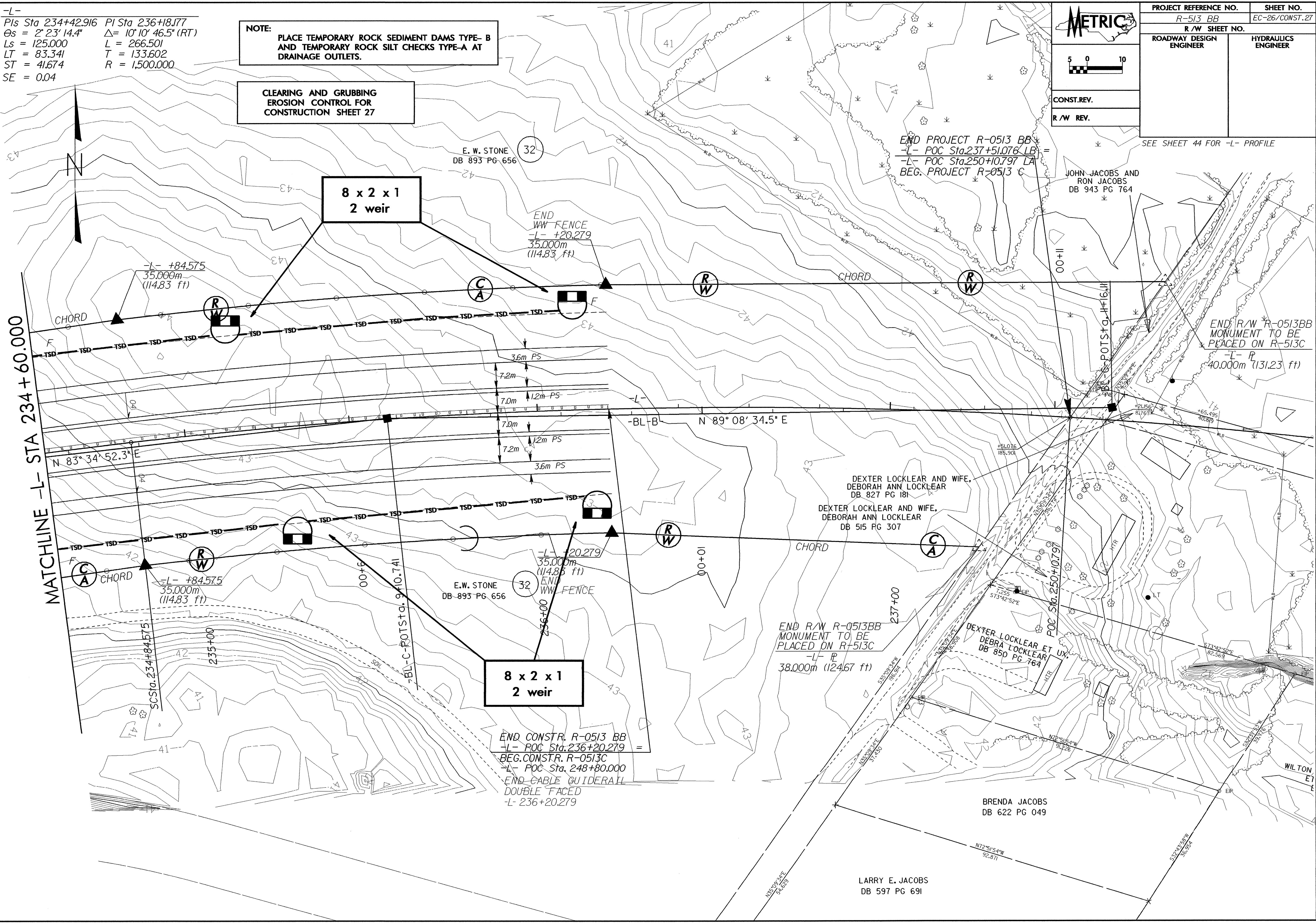
**CLEARING AND GRUBBING  
 EROSION CONTROL FOR  
 CONSTRUCTION SHEET 27**



PROJECT REFERENCE NO. R-513 BB	SHEET NO. EC-26/CONST.27
R/W SHEET NO.	
ROADWAY DESIGN ENGINEER	HYDRAULICS ENGINEER
CONST. REV.	
R/W REV.	

SEE SHEET 44 FOR -L- PROFILE

MATCHLINE -L- STA 234 + 60.000



END PROJECT R-0513 BB  
 -L- POC Sta. 237+51.076 LB =  
 -L- POC Sta. 250+10.797 LA  
 BEG. PROJECT R-0513 C

JOHN JACOBS AND  
 RON JACOBS  
 DB 943 PG 764

END R/W R-0513BB  
 MONUMENT TO BE  
 PLACED ON R-513C  
 -L- P  
 40.000m (131.23 ft)

DEXTER LOCKLEAR AND WIFE,  
 DEBORAH ANN LOCKLEAR  
 DB 827 PG 181  
 DEXTER LOCKLEAR AND WIFE,  
 DEBORAH ANN LOCKLEAR  
 DB 515 PG 307

DEXTER LOCKLEAR ET UX,  
 DEBRA LOCKLEAR  
 DB 850 PG 764

BRENDA JACOBS  
 DB 622 PG 049

LARRY E. JACOBS  
 DB 597 PG 691

**8 x 2 x 1  
 2 weir**

**8 x 2 x 1  
 2 weir**

END CONSTR. R-0513 BB  
 -L- POC Sta. 236+20.279 =  
 BEG. CONSTR. R-0513C  
 -L- POC Sta. 248+80.000  
 END CABLE GUIDERAIL  
 DOUBLE FACED  
 -L- 236+20.279

END  
 WW FENCE  
 -L- +20.279  
 35.000m  
 (114.83 ft)

E.W. STONE  
 DB 893-PG 656

-L- +84.575  
 35.000m  
 (114.83 ft)

-L- +84.575  
 35.000m  
 (114.83 ft)

-L- +20.279  
 35.000m  
 (114.83 ft)

E.W. STONE  
 DB 893-PG 656

END R/W R-0513BB  
 MONUMENT TO BE  
 PLACED ON R-513C  
 -L- P  
 38.000m (124.67 ft)

-L- POC Sta. 250+10.791

DEXTER LOCKLEAR ET UX,  
 DEBRA LOCKLEAR  
 DB 850 PG 764

BRENDA JACOBS  
 DB 622 PG 049

LARRY E. JACOBS  
 DB 597 PG 691

**8 x 2 x 1  
 2 weir**

**8 x 2 x 1  
 2 weir**

END CONSTR. R-0513 BB  
 -L- POC Sta. 236+20.279 =  
 BEG. CONSTR. R-0513C  
 -L- POC Sta. 248+80.000  
 END CABLE GUIDERAIL  
 DOUBLE FACED  
 -L- 236+20.279

END  
 WW FENCE  
 -L- +20.279  
 35.000m  
 (114.83 ft)

E.W. STONE  
 DB 893-PG 656

-L- +84.575  
 35.000m  
 (114.83 ft)

-L- +84.575  
 35.000m  
 (114.83 ft)

-L- +20.279  
 35.000m  
 (114.83 ft)

E.W. STONE  
 DB 893-PG 656

END R/W R-0513BB  
 MONUMENT TO BE  
 PLACED ON R-513C  
 -L- P  
 38.000m (124.67 ft)

-L- POC Sta. 250+10.791

DEXTER LOCKLEAR ET UX,  
 DEBRA LOCKLEAR  
 DB 850 PG 764

BRENDA JACOBS  
 DB 622 PG 049

LARRY E. JACOBS  
 DB 597 PG 691