

-L-  
 PIs Sta 202+46.833  
 $\theta_s = 2^\circ 51' 53.2''$   
 $L_s = 90.000$   
 $LT = 60.008$   
 $ST = 30.007$   
 $SE = 0.064$

**METRIC**

5 0 10

CONST. REV.

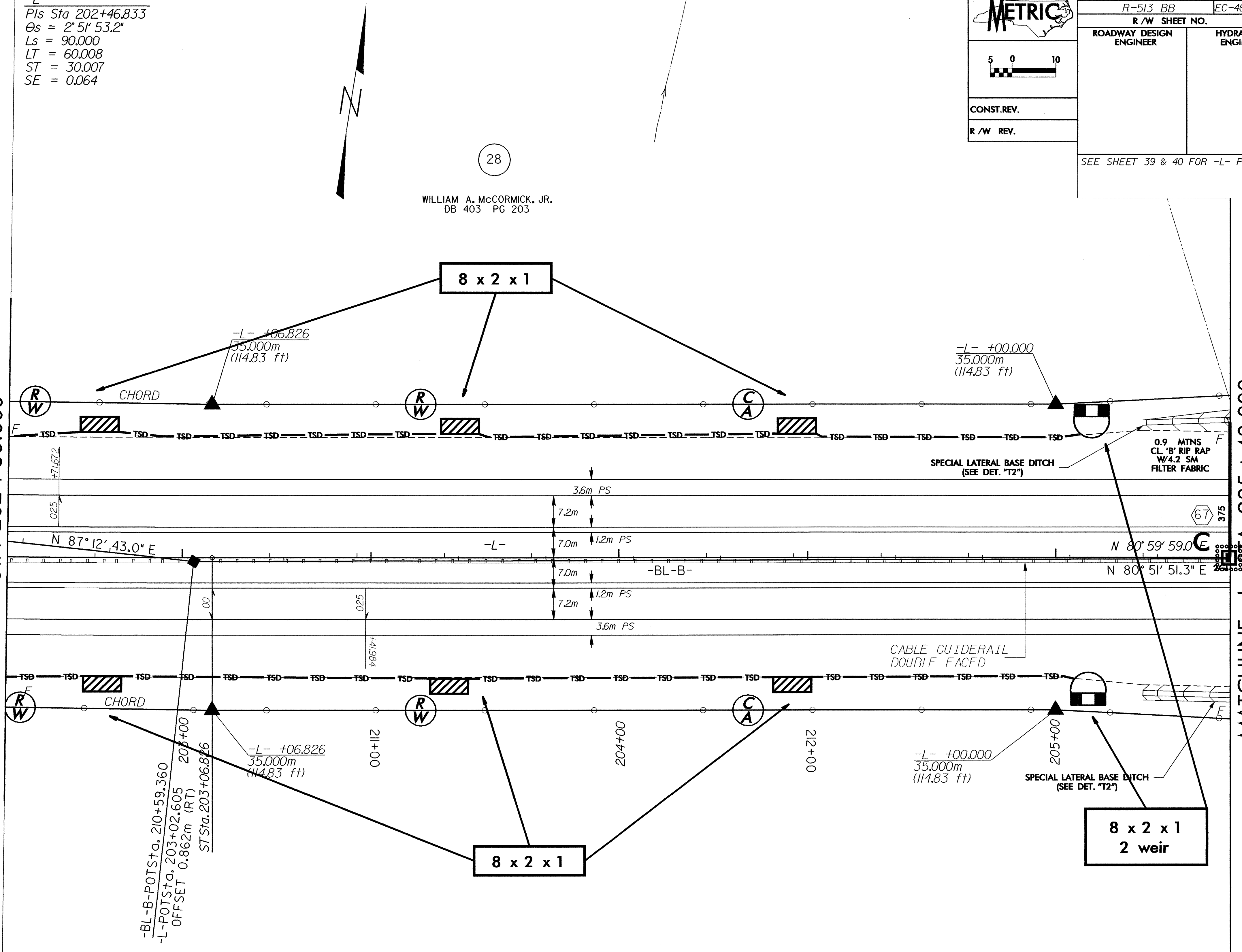
R/W REV.

PROJECT REFERENCE NO. R-513 BB	SHEET NO. EC-46/CONST.18
R/W SHEET NO.	
ROADWAY DESIGN ENGINEER	HYDRAULICS ENGINEER

SEE SHEET 39 & 40 FOR -L- PROFILE

MATCHLINE -L- STA 202+60.000

MATCHLINE -L- STA 205+40.000



(28)

WILLIAM A. McCORMICK, JR.  
 DB 403 PG 203

(28)

WILLIAM A. McCORMICK, JR.  
 DB 403 PG 203