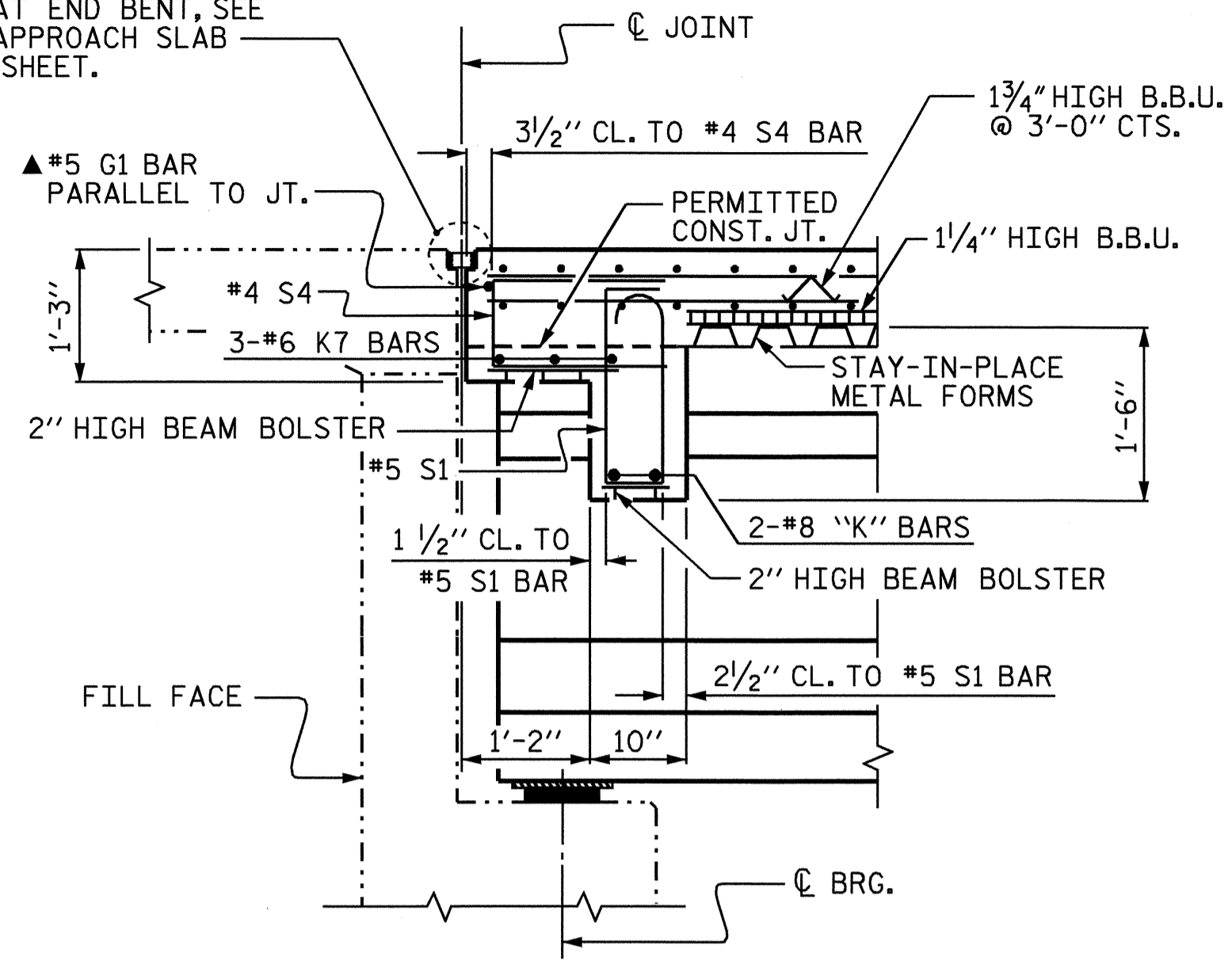
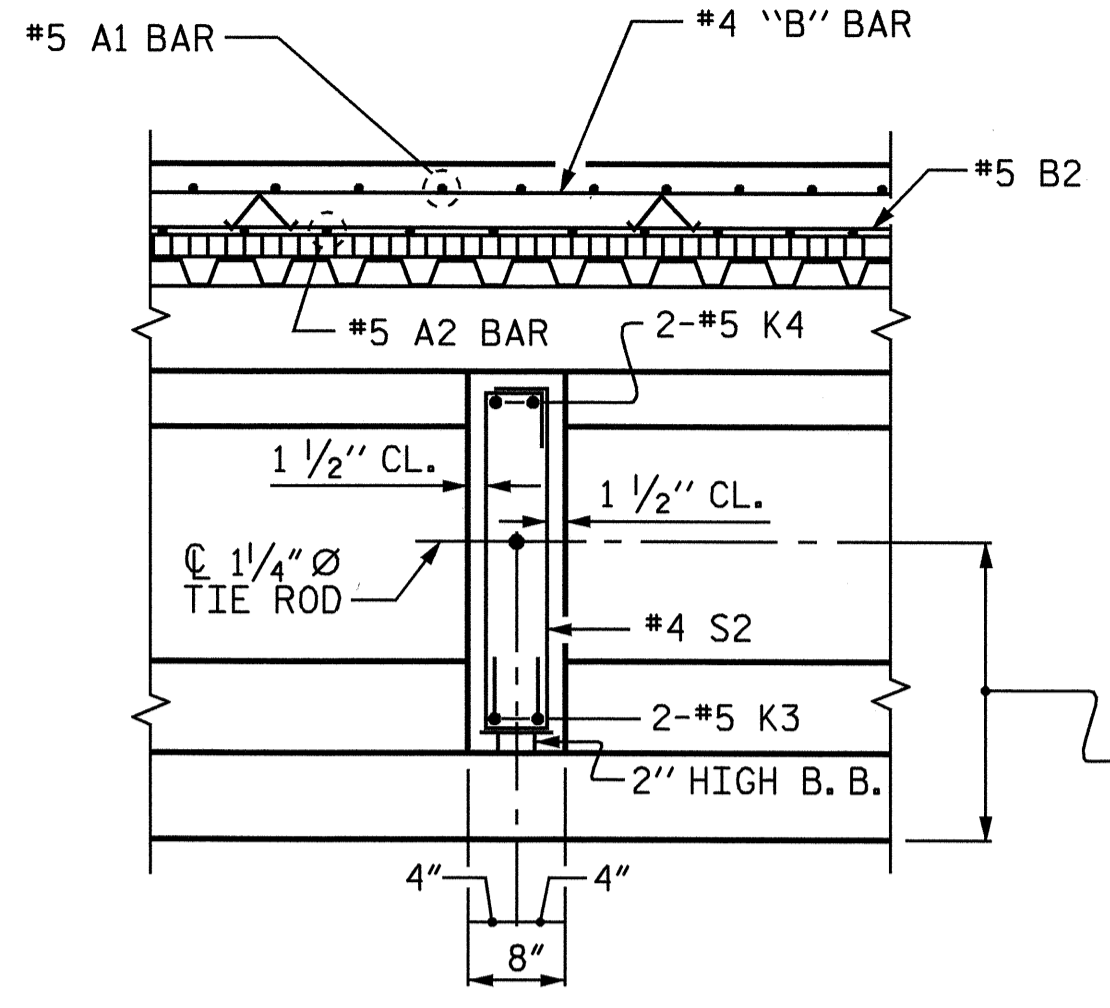


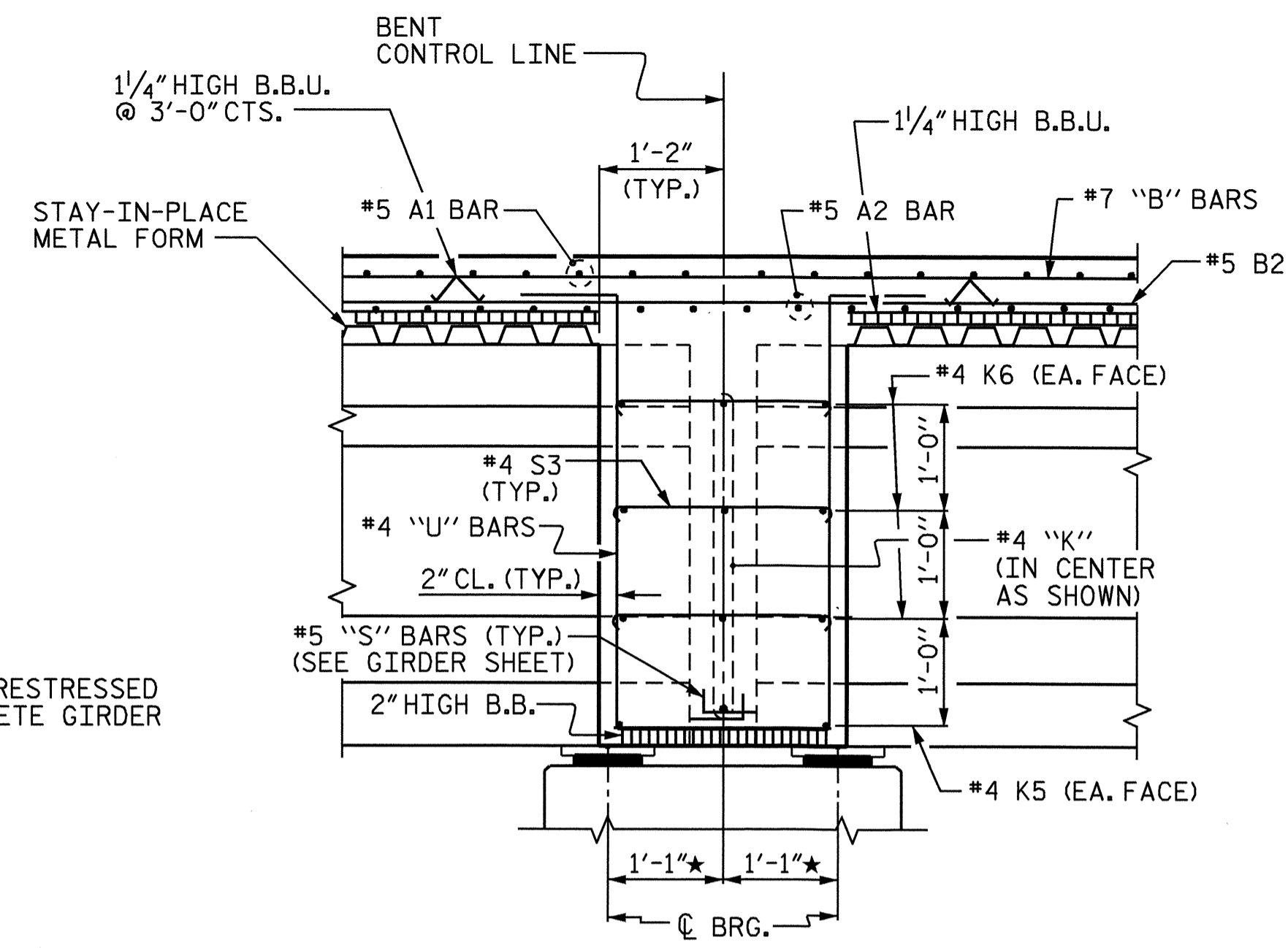
FOR EVAZOTE JOINT SEAL  
 DETAILS AT END BENT, SEE  
 "BRIDGE APPROACH SLAB  
 DETAILS" SHEET.



**SECTION A-A**



**SECTION B-B**

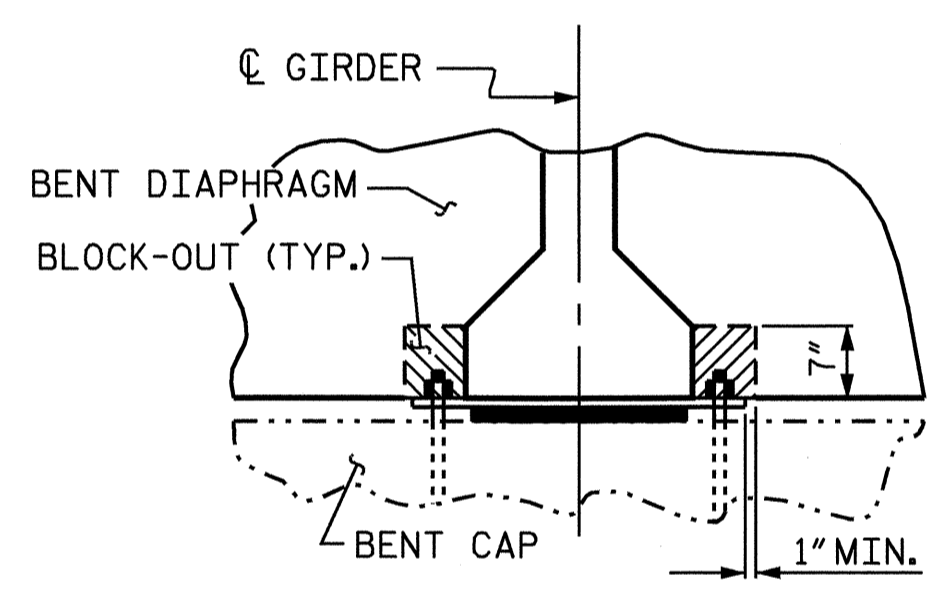


**SECTION C-C**

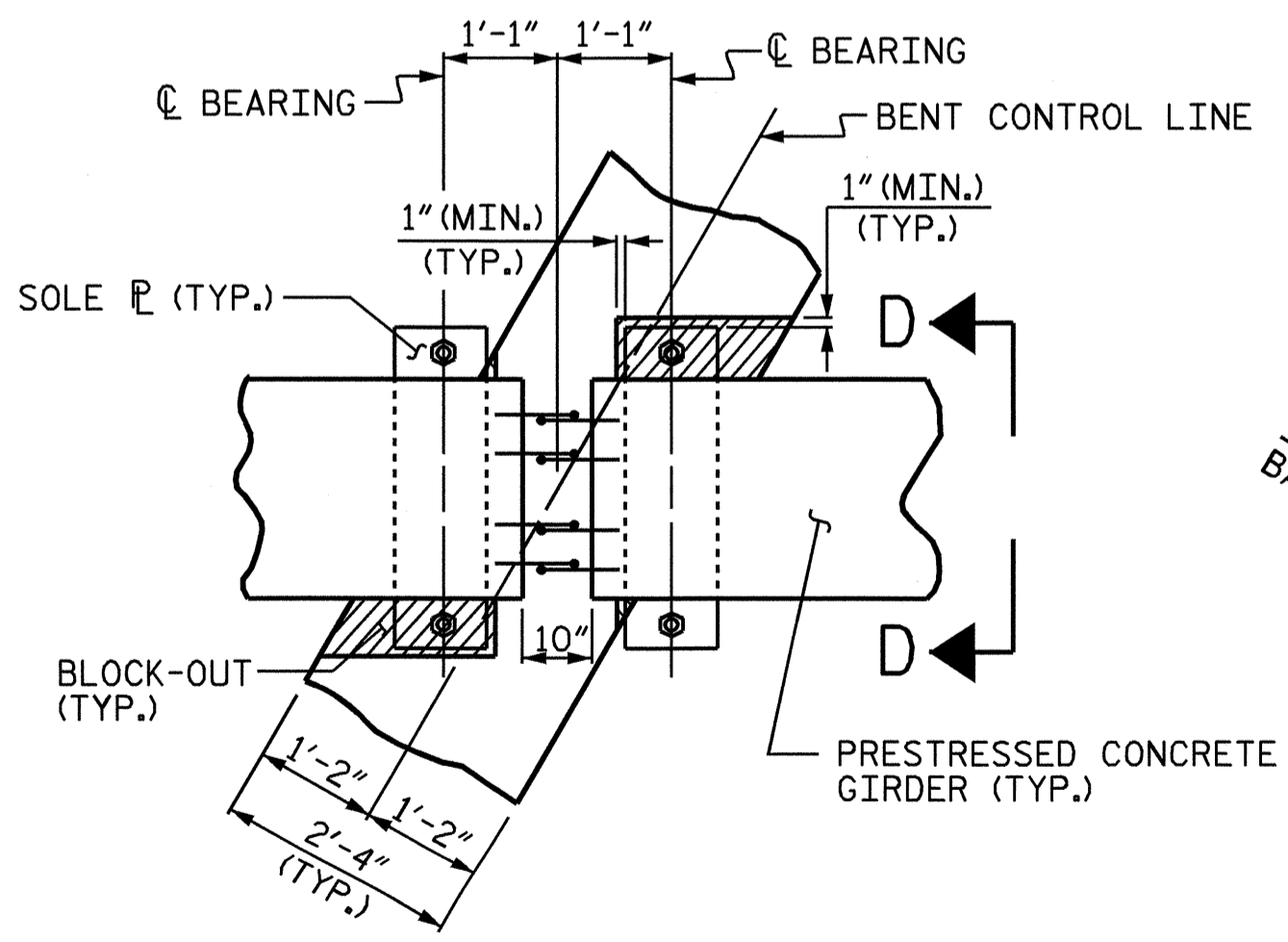
\* MEASURED ALONG GIRDER

**NOTES:**

FOR LOCATION OF SECTIONS, SEE "PLAN  
 OF SPAN" SHEETS.  
 ▲ #5 G1 BAR MAY BE SHIFTED SLIGHTLY,  
 AS NECESSARY, TO CLEAR REINFORCING  
 STEEL AND STIRRUPS.

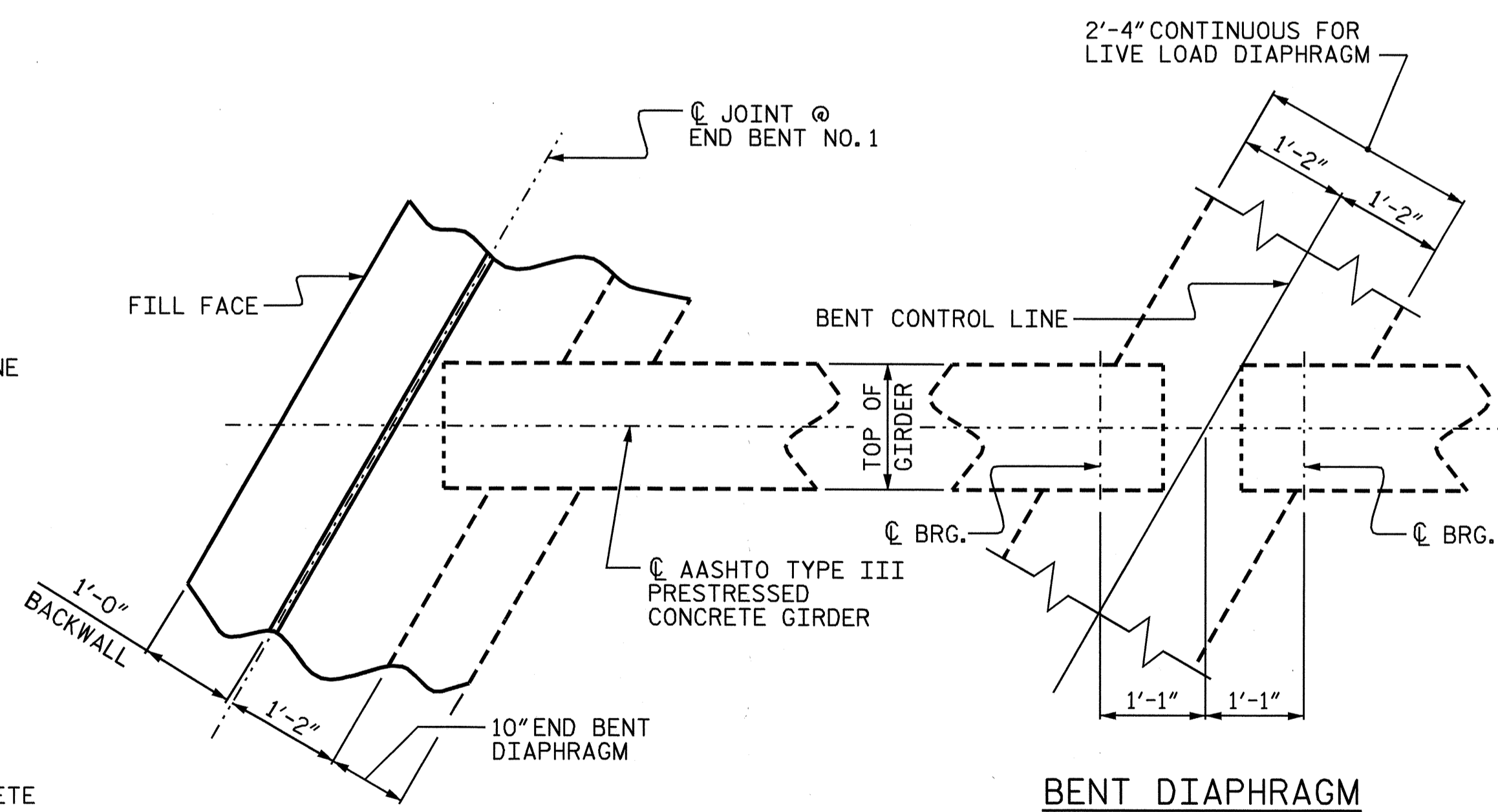


**SECTION D-D**



**PLAN**

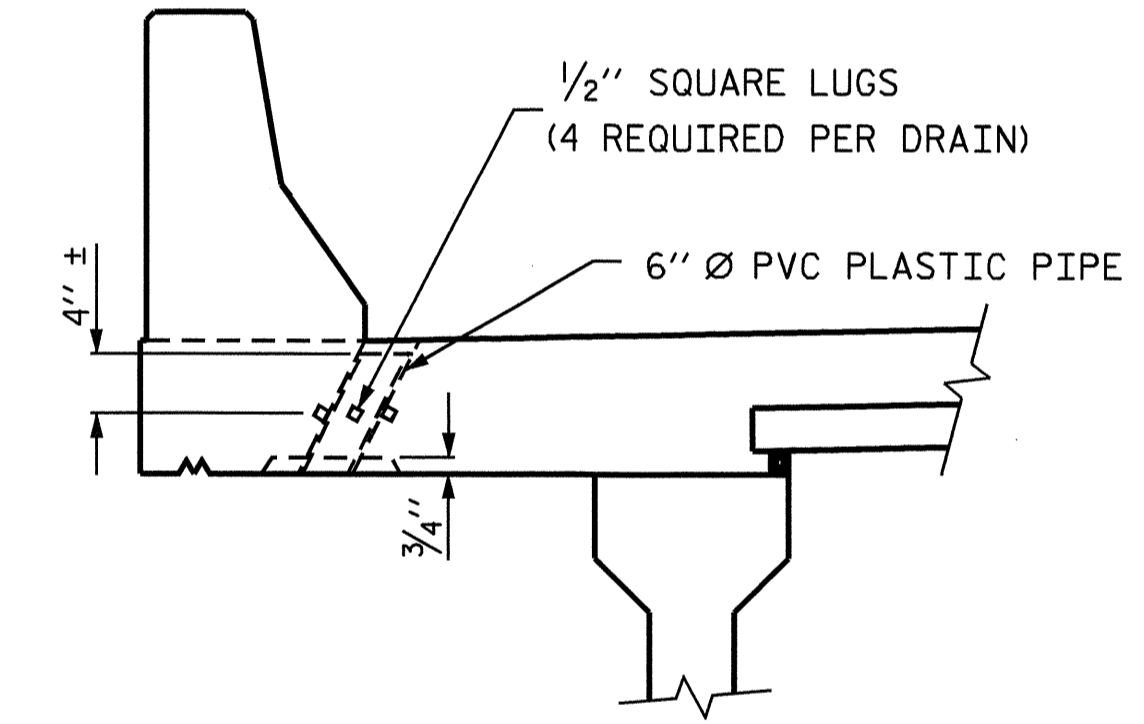
**BENT DIAPHRAGM  
 BLOCK-OUT DETAIL**



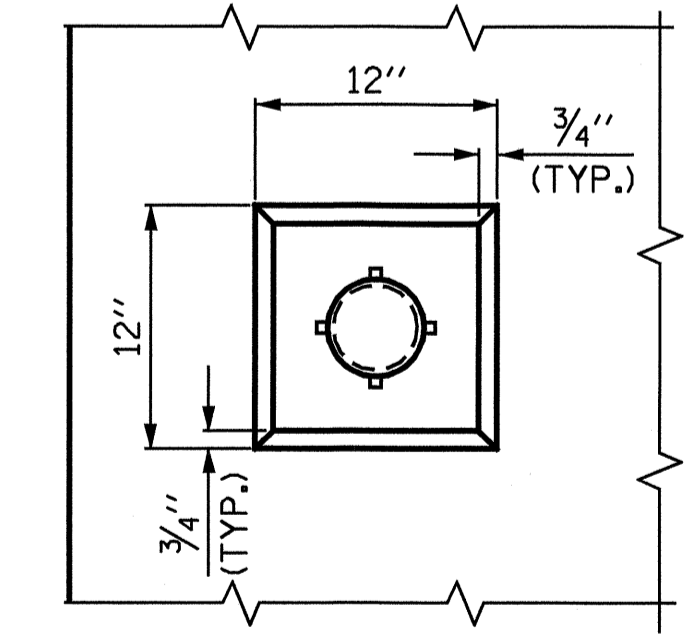
**END BENT DIAPHRAGM**

(END BENT NO. 1 SHOWN,  
 END BENT NO. 2 SIMILAR)

**PLAN OF DIAPHRAGMS**

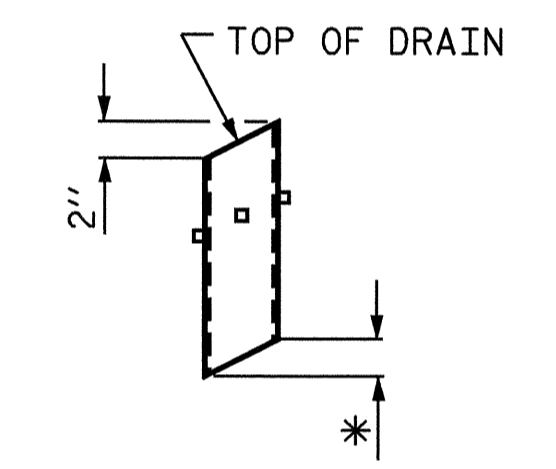


**ELEVATION**



**PLAN OF RECESS**

**DRAIN DETAILS**



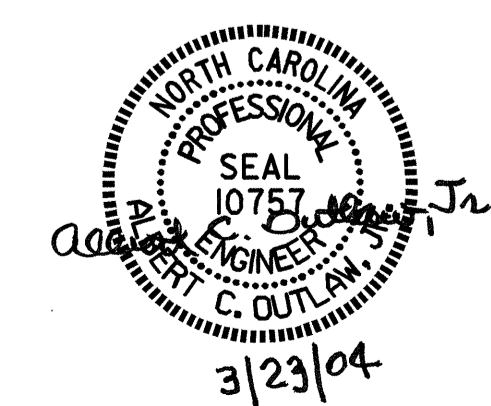
**PIPE DETAIL**

TOP OF FLOOR DRAINS TO BE SET 3/8" BELOW SURFACE OF SLAB.  
 4-1/2" SQUARE LUGS TO BE GLUED TO THE P.V.C. PLASTIC PIPE  
 AT EQUAL SPACES AROUND THE PIPE DRAIN APPROXIMATELY  
 4" FROM THE TOP OF THE PIPE.  
 THE 6" Ø PVC PLASTIC PIPE AND FITTINGS SHALL BE SCHEDULE  
 40 AND CONFORM TO ASTM D1785.

PROJECT NO. B-3885  
ORANGE COUNTY  
 STATION: 17+75.00 -L-

SHEET 2 OF 2

STATE OF NORTH CAROLINA  
 DEPARTMENT OF TRANSPORTATION  
 RALEIGH  
 SUPERSTRUCTURE  
 TYPICAL SECTION



DRAWN BY: P.C. BREWER DATE: 5/29/03  
 CHECKED BY: S.B. WILLIAMS DATE: 8/5/03

REVISIONS				SHEET NO.	
NO.	BY:	DATE:	NO.	BY:	DATE:
1			3		
2			4		
					TOTAL SHEETS
					33