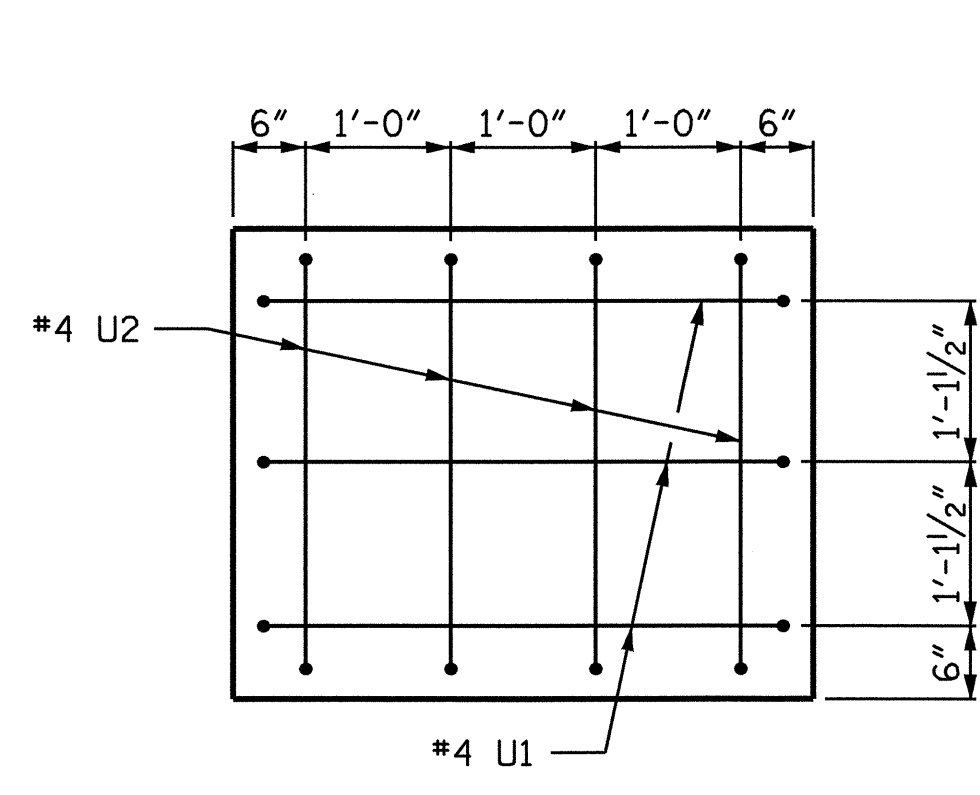
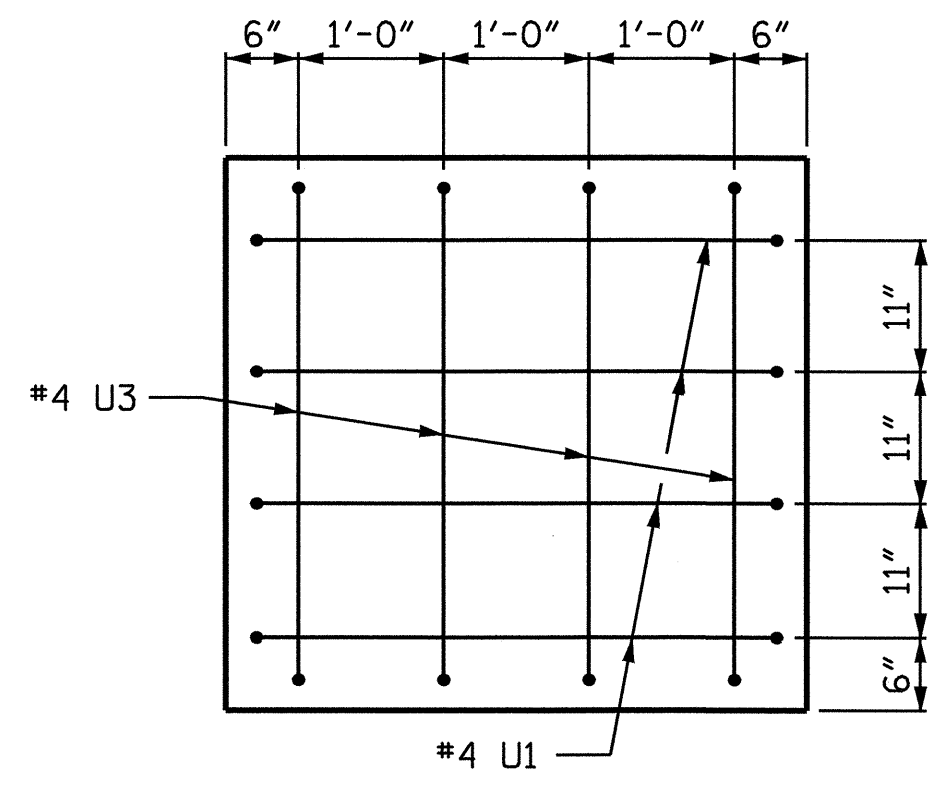


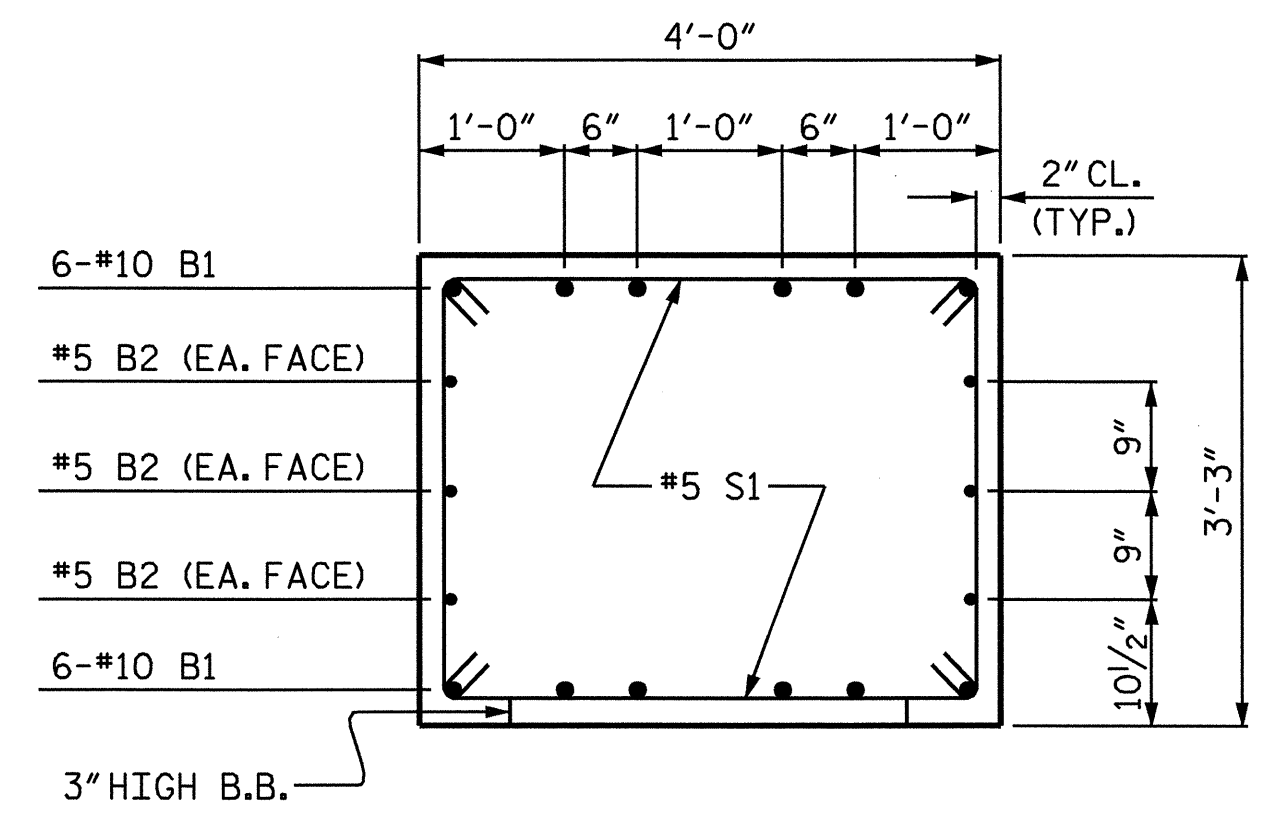
PLAN OF DRILLED PIERS



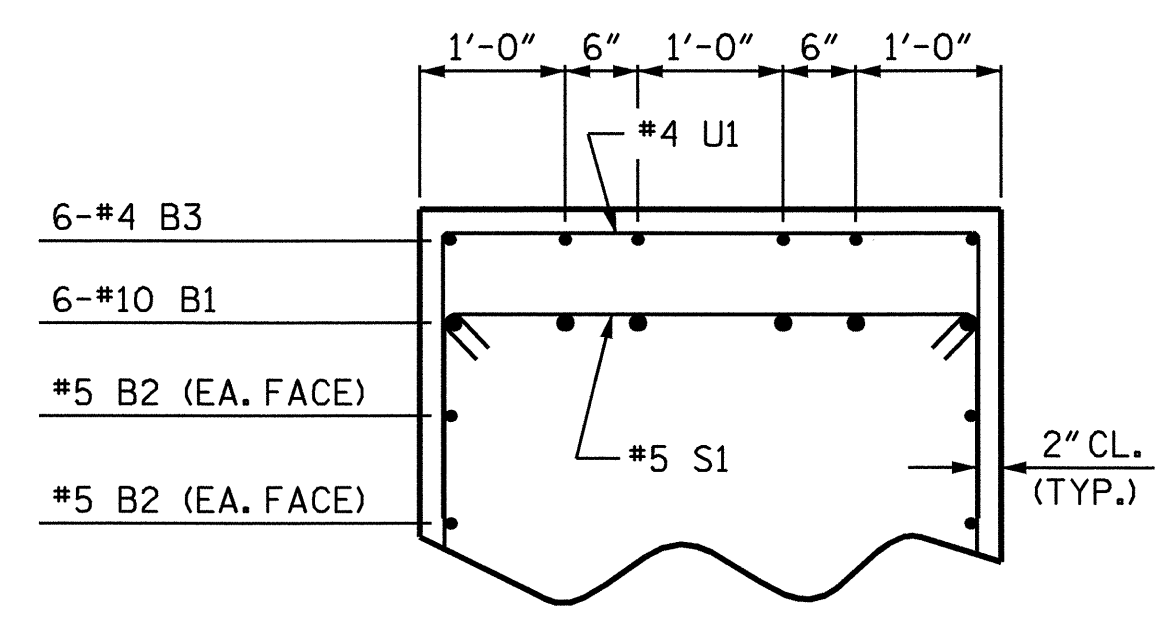
VIEW X-X



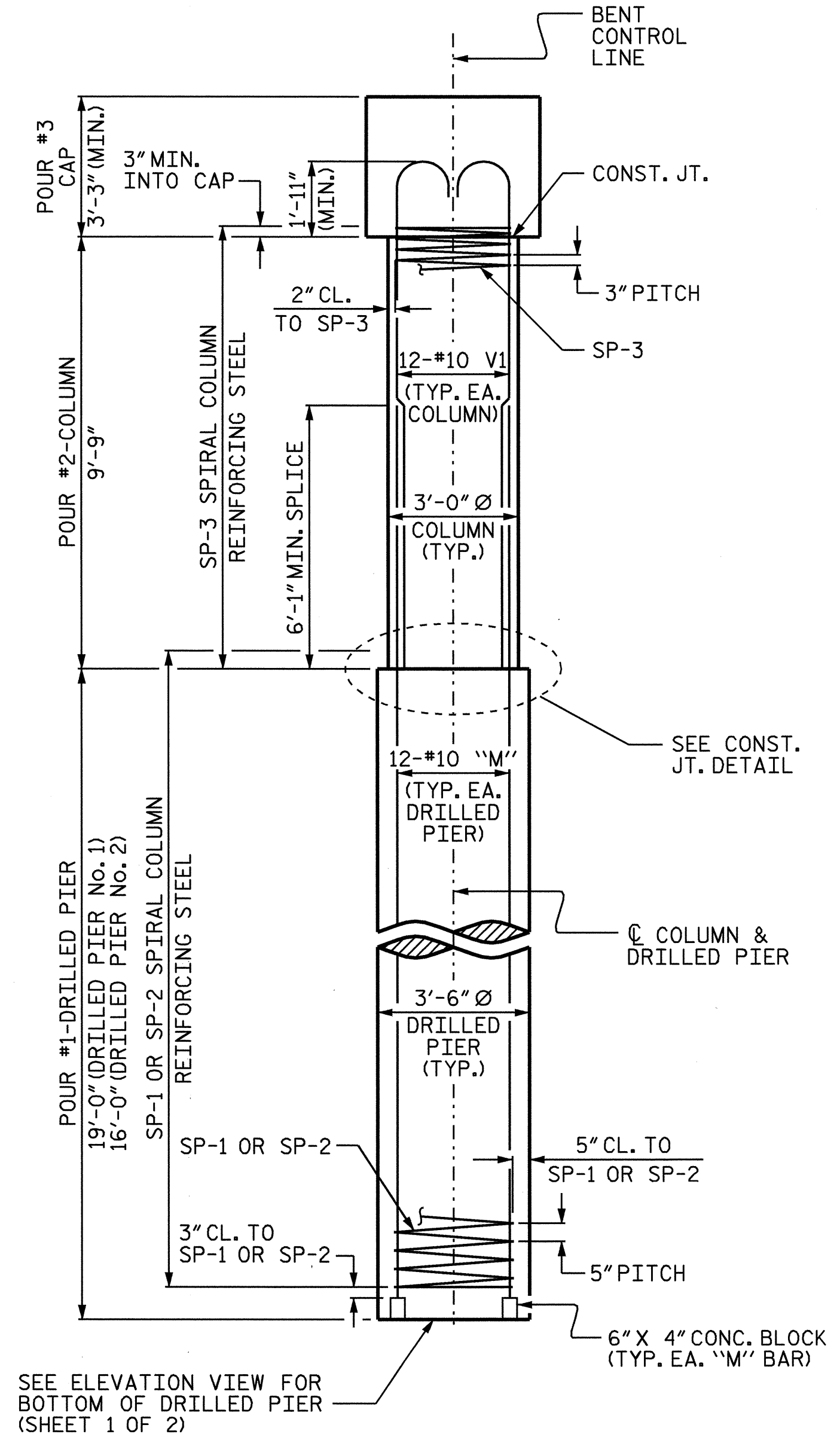
VIEW Y-Y



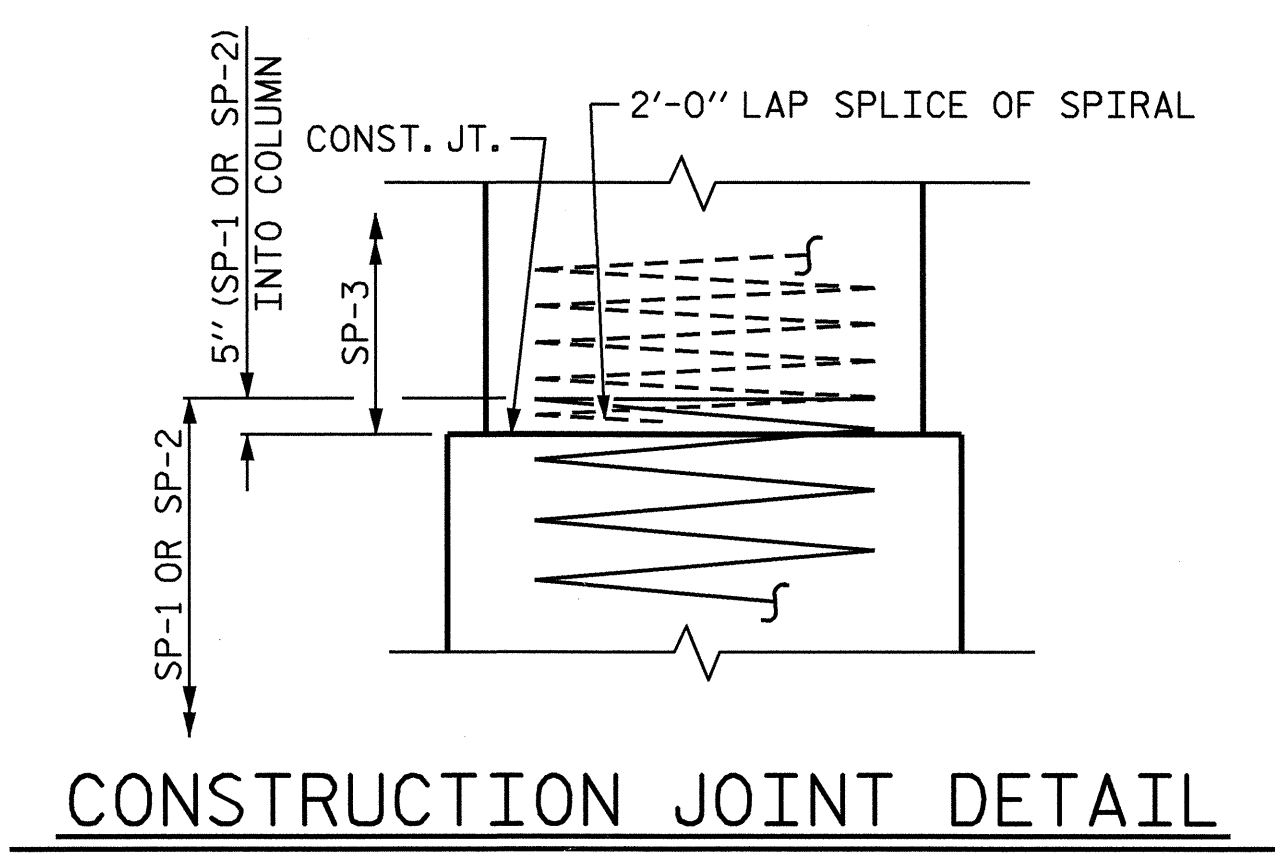
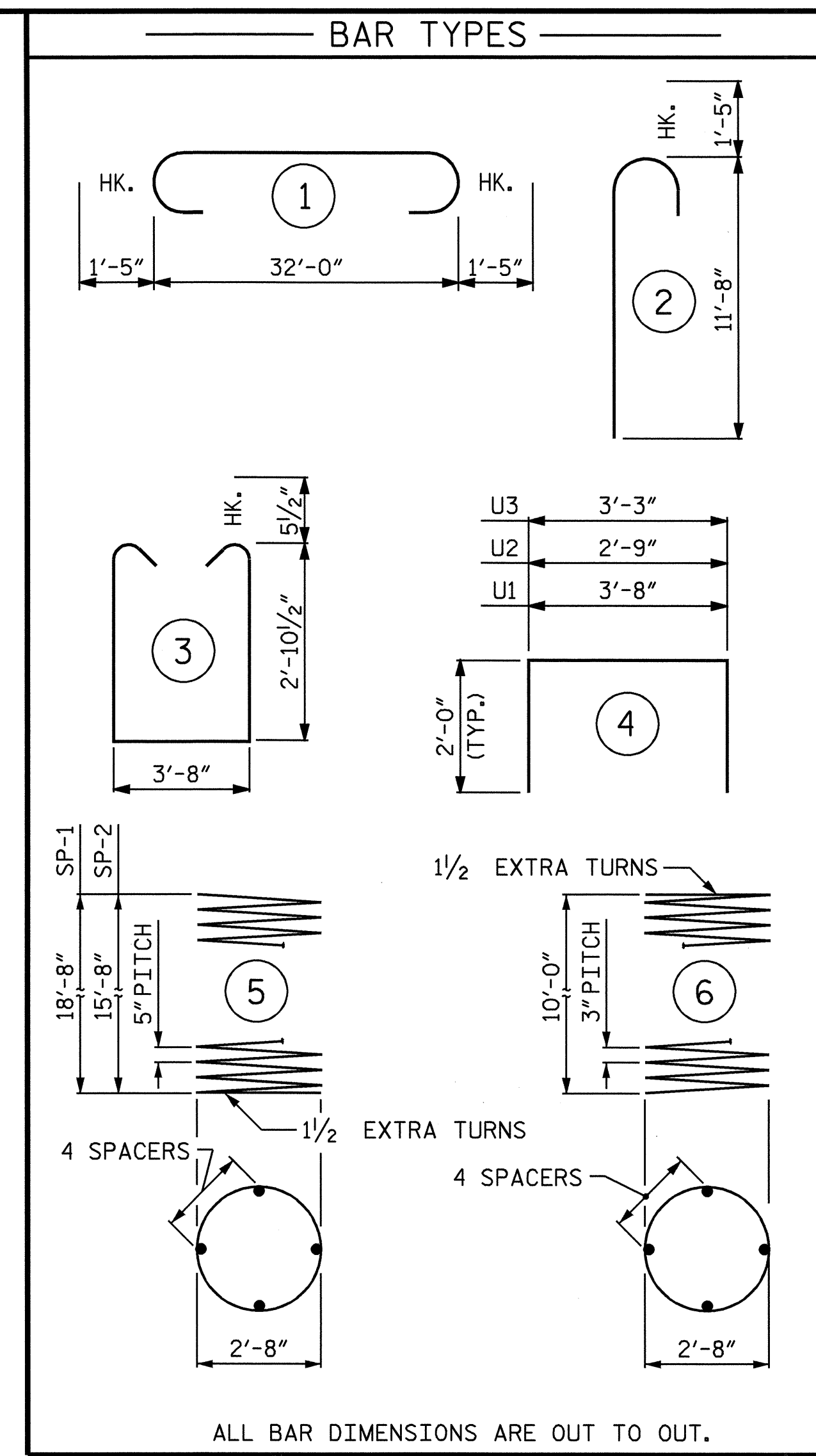
SECTION A-A



PARTIAL SECTION B-B



END ELEVATION



BILL OF MATERIAL						
BENT No. 2						
BAR NO.	NO.	SIZE	TYPE	LENGTH	WEIGHT	
B1	12	#10	1	34'-10"	1799	
B2	6	#5	STR	32'-2"	201	
B3	6	#4	STR	13'-4"	53	
M1	12	#10	STR	27'-7"	1424	
M2	12	#10	STR	24'-7"	1269	
S1	44	#5	3	10'-4"	474	
U1	42	#4	4	7'-8"	215	
U2	4	#4	4	6'-9"	18	
U3	4	#4	4	7'-3"	19	
V1	24	#10	2	13'-1"	1351	
REINFORCING STEEL					6,823	LBS.
SP-1	1	*	5	386'-7"	403	
SP-2	1	*	5	329'-0"	343	
SP-3	2	**	6	346'-7"	463	
SPIRAL COLUMN REINFORCING STEEL					1,209	LBS.
* THE SP-1 AND SP-2 SPIRAL REINFORCING STEEL SHALL BE W31 OR D-31 COLD DRAWN WIRE OR #5 PLAIN OR DEFORMED BAR.						
** THE SP-3 SPIRAL REINFORCING STEEL SHALL BE W20 OR D-20 COLD DRAWN WIRE OR #4 PLAIN OR DEFORMED BAR.						
CLASS A CONCRETE (C.Y.)						
POUR #2 (COLUMN)					= 5.1	
POUR #3 (CAP)					= 16.7	
TOTAL					= 21.8	
DRILLED PIERS:						
DRILLED PIER CONCRETE (C.Y.)						
POUR #1 (DRILLED PIER)					= 12.5	
3'-6" Ø DRILLED PIER IN SOIL					= 13.0 LIN. FT.	
3'-6" Ø DRILLED PIER NOT IN SOIL					= 22.0 LIN. FT.	
CSL TUBES					= 160.0 LIN. FT.	

DRAWN BY: P.C. BREWER DATE: 12/8/03
 CHECKED BY: B.N. GRADY DATE: 12/03

22-MAR-2004 14:39
 H:\squdv\B3885\pbrewer\Microstation\B3885.ed.B2.01.dgn

PROJECT NO. B-3885
 ORANGE COUNTY
 STATION: 17+75.00 -L-

SHEET 2 OF 2

STATE OF NORTH CAROLINA DEPARTMENT OF TRANSPORTATION RALEIGH						
SUBSTRUCTURE BENT No. 2						
REVISIONS						SHEET NO.
NO.	BY:	DATE:	NO.	BY:	DATE:	S-26
1			3			TOTAL SHEETS
2			4			33

