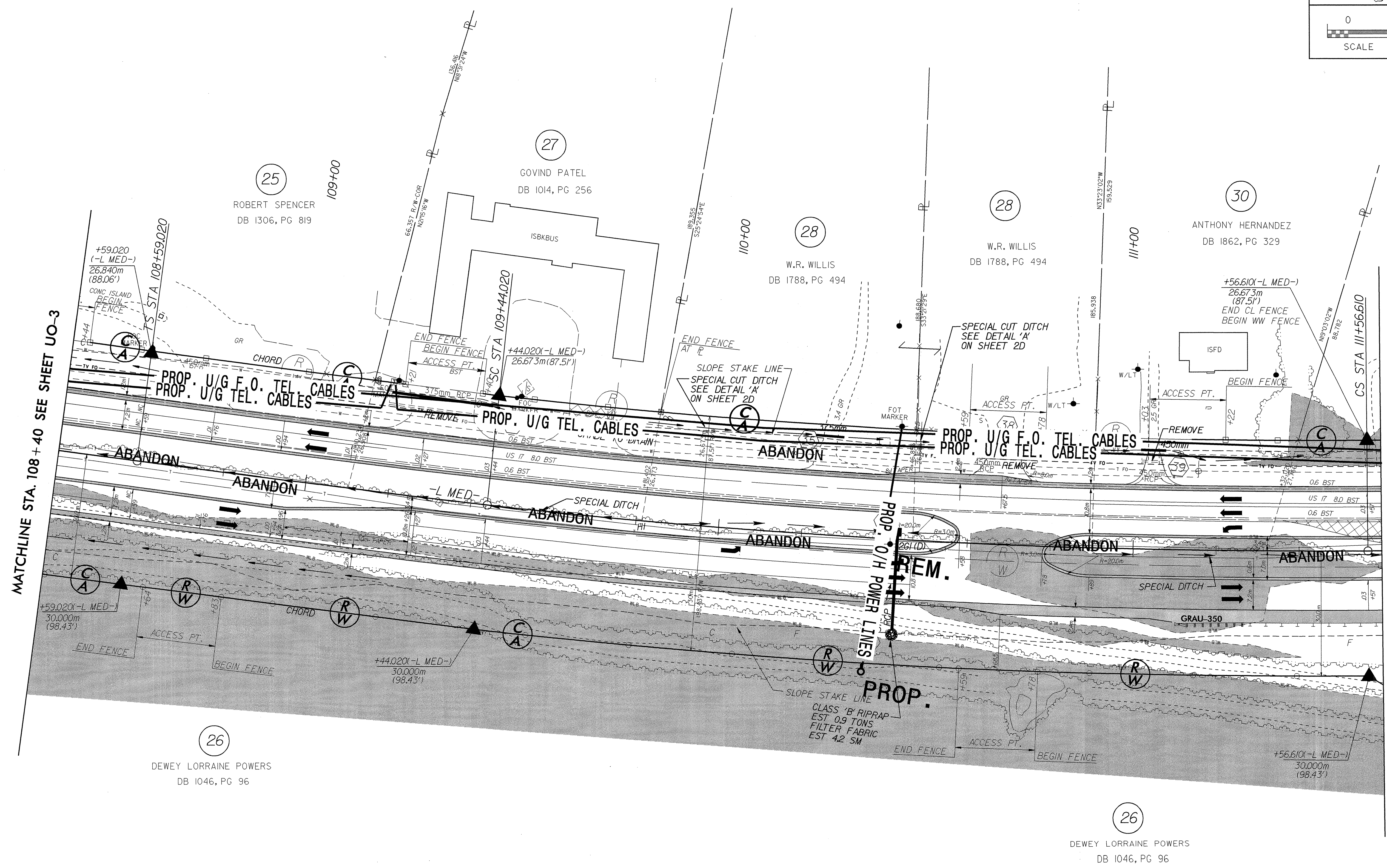


NOTE:
ALL PROPOSED UTILITY WORK
SHOWN ON THIS SHEET WILL
BE DONE BY OTHERS



MATCHLINE STA. 108 + 40 SEE SHEET UO-3

MATCHLINE STA 111 + 60 SEE SHEET UO-5

-L MED-		
Pls Sta 109+15.688	Pls Sta 110+50.439	Pls Sta 111+84.945
$\theta_s = 1^{\circ} 21' 10.1''$	$\Delta = 6^{\circ} 46' 01.0'' (LT)$	$\theta_s = 1^{\circ} 21' 10.1''$
$L_s = 85.000$	$L = 212.590$	$L_s = 85.000$
$LT = 56.668$	$T = 106.419$	$LT = 56.668$
$ST = 28.335$	$R = 1,800.000$	$ST = 28.335$
	$SE = 0.03$	

SEE SHEET NO. 2D FOR ALL DRIVEWAY DETAILS.

SEE SHEET NO. 2D FOR ALL DITCH DETAILS.

SEE SHEET NO. 37 FOR NBL & SBL GRADES AND PROFILES AND ALL DITCH GRADES AND PROFILES.

R:\11\11_29-OCT-2003_1327\11-25-14A_RDY_FSH_07.U0-4.dgn