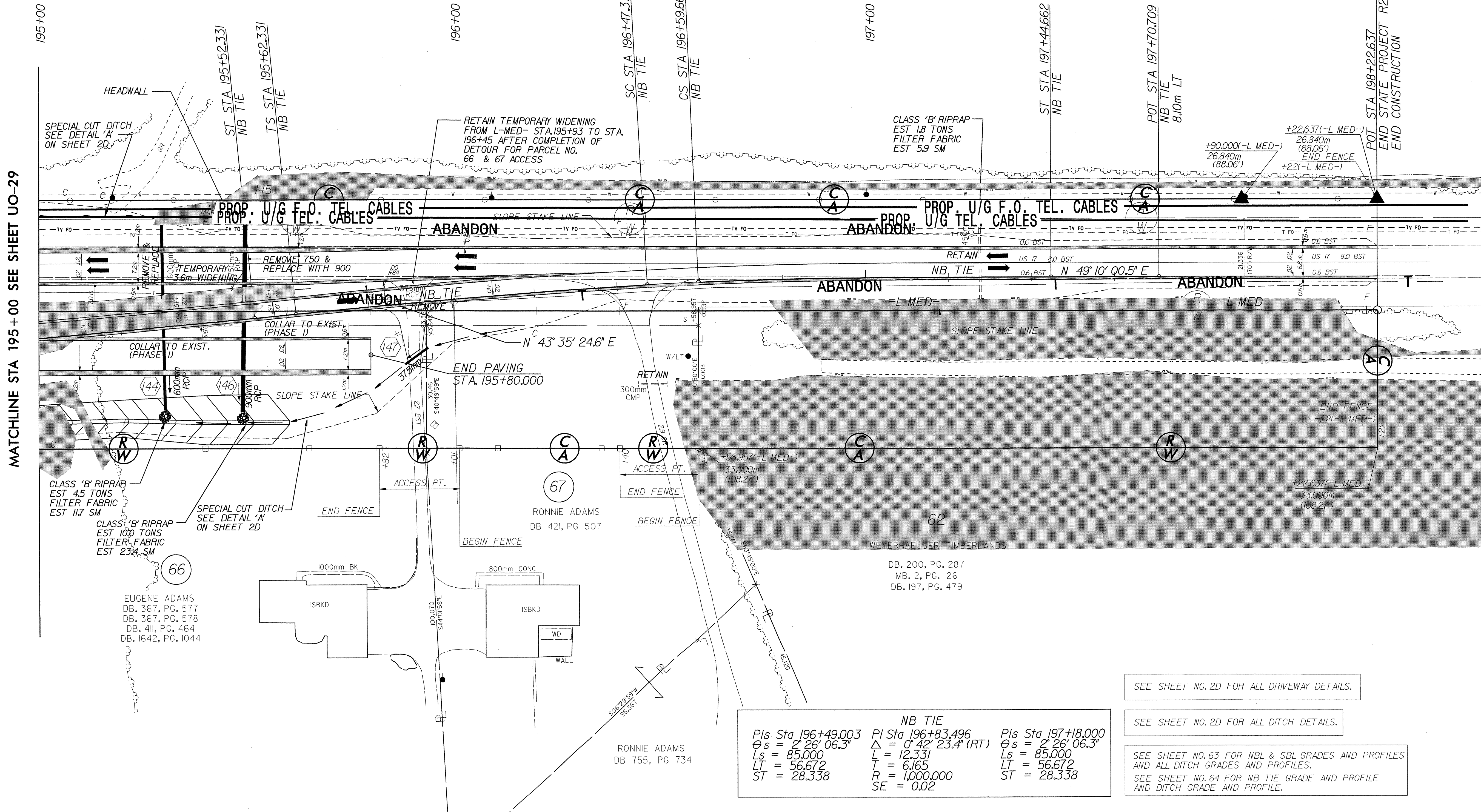


NOTE:
 ALL PROPOSED UTILITY WORK
 SHOWN ON THIS SHEET WILL
 BE DONE BY OTHERS

62

WEYERHAEUSER TIMBERLANDS
 DB. 200, PG. 287
 MB. 2, PG. 26
 DB. 197, PG. 479



MATCHLINE STA 195+00 SEE SHEET UO-29

NB TIE		
Pls Sta 196+49.003	Pls Sta 196+83.496	Pls Sta 197+18.000
$\theta_s = 2^\circ 26' 06.3''$	$\Delta = 0^\circ 42' 23.4''$ (RT)	$\theta_s = 2^\circ 26' 06.3''$
$L_s = 85.000$	$L = 12.331$	$L_s = 85.000$
$LT = 56.672$	$T = 6.165$	$LT = 56.672$
$ST = 28.338$	$R = 1,000.000$	$ST = 28.338$
	$SE = 0.02$	

SEE SHEET NO. 2D FOR ALL DRIVEWAY DETAILS.

SEE SHEET NO. 2D FOR ALL DITCH DETAILS.

SEE SHEET NO. 63 FOR MBL & SBL GRADES AND PROFILES AND ALL DITCH GRADES AND PROFILES.
 SEE SHEET NO. 64 FOR NB TIE GRADE AND PROFILE AND DITCH GRADE AND PROFILE.

R:\N\14_29-OCT-2003_16:25:25\2514A_RDY_PSH_33_UO-30.dgn