

REVISIONS

TAYLOR WISEMAN & TAYLOR  
ENGINEERS • SURVEYORS • PLANNERS  
G.P.S. • SUBSURFACE UTILITY ENGINEERING  
4912 WATERS EDGE DRIVE, SUITE 120, RALEIGH, N.C. 27809  
TELEPHONE NO. (919) 859-8232 FAX NO. (919) 859-8235

**METRIC**

CONST. REV.  
R/W REV.

|                                  |                     |
|----------------------------------|---------------------|
| PROJECT REFERENCE NO.<br>R2514-A | SHEET NO.<br>24     |
| R/W SHEET NO.                    | HYDRAULICS ENGINEER |
| ROADWAY DESIGN ENGINEER          |                     |

175+00

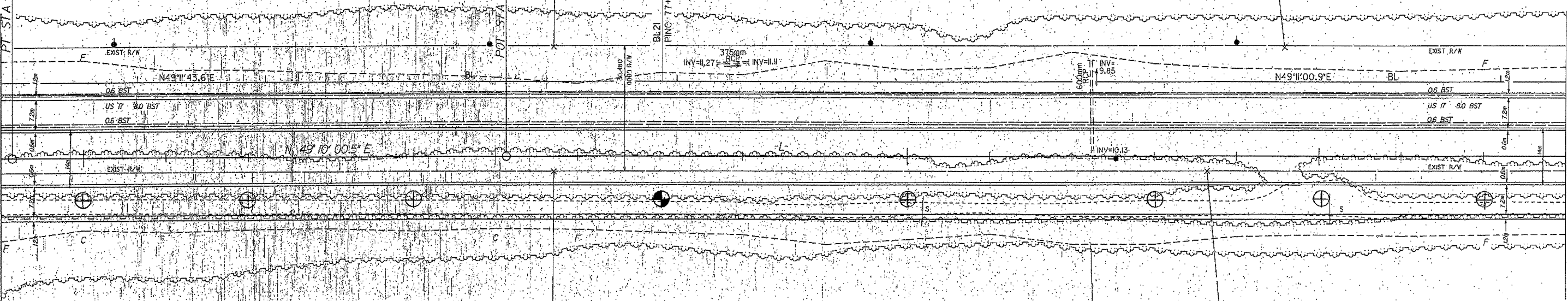
GRACE EUBANK HORTON  
DB.1345, PG. 568

LEO L. & HAZEL S. PARKER  
DB 853, PG 661  
PB. 25, PG 22, SLIDE D-210

PERCY & LINA PARKER  
DB 853, PG 663  
PB. 25, PG 22, SLIDE D-210

MATCHLINE STA 174+80 SEE SHEET 23

MATCHLINE STA 178+60 SEE SHEET 25



GRACE EUBANK HORTON  
DB.1345, PG. 568  
DB. 925, PG. 357

PERCY & LINA PARKER  
DB 853, PG 661  
PB. 25, PG 22, SLIDE D-210  
DB. 925, PG. 357

LEO L. & HAZEL S. PARKER  
DB 853, PG 661  
PB. 25, PG 22, SLIDE D-210  
DB. 925, PG. 357

$L =$   
 $PI STA 174+76.487$   
 $\Delta = 10^{\circ} 04' 47.0\" (LT)$   
 $L = 12.523$   
 $T = 6.261$   
 $R = 9,000.000$   
 $SE = 10.02$

SEE SHEET NO. 51 FOR NB & SB GRADES AND PROFILES.

19-MAR-09 11:53 AM 10001.dgn 1:24.49m