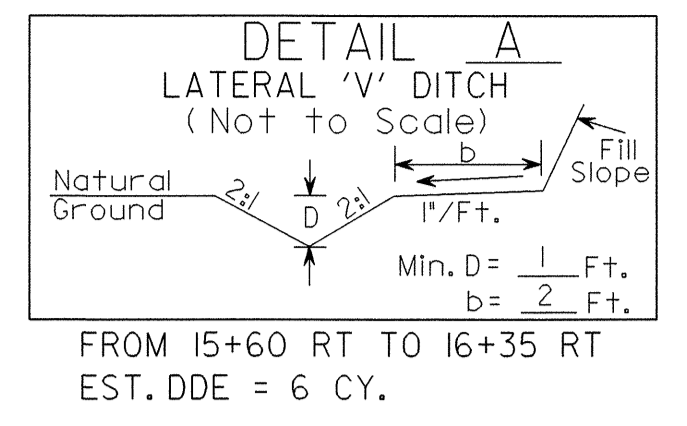
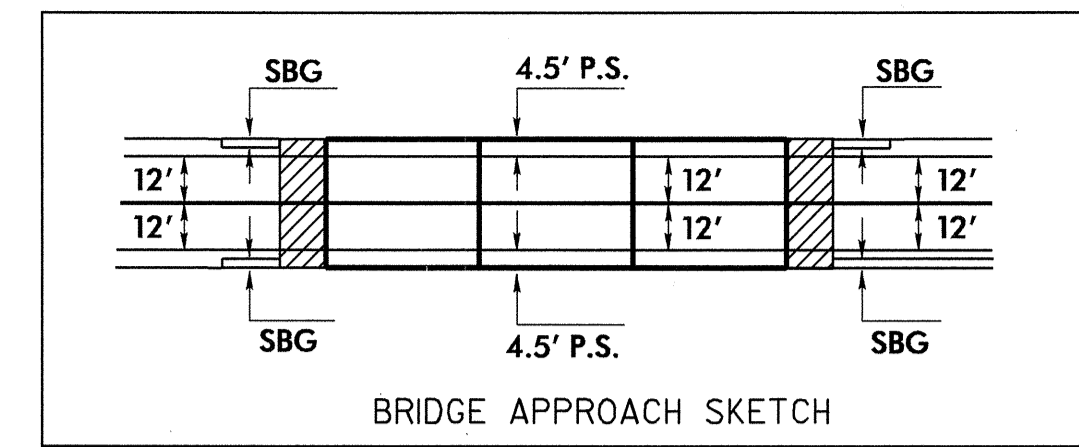


UTILITIES BY OTHERS

NOTE:
ALL PROPOSED UTILITY WORK
SHOWN ON THIS SHEET WILL
BE DONE BY OTHERS



DATUM DESCRIPTION

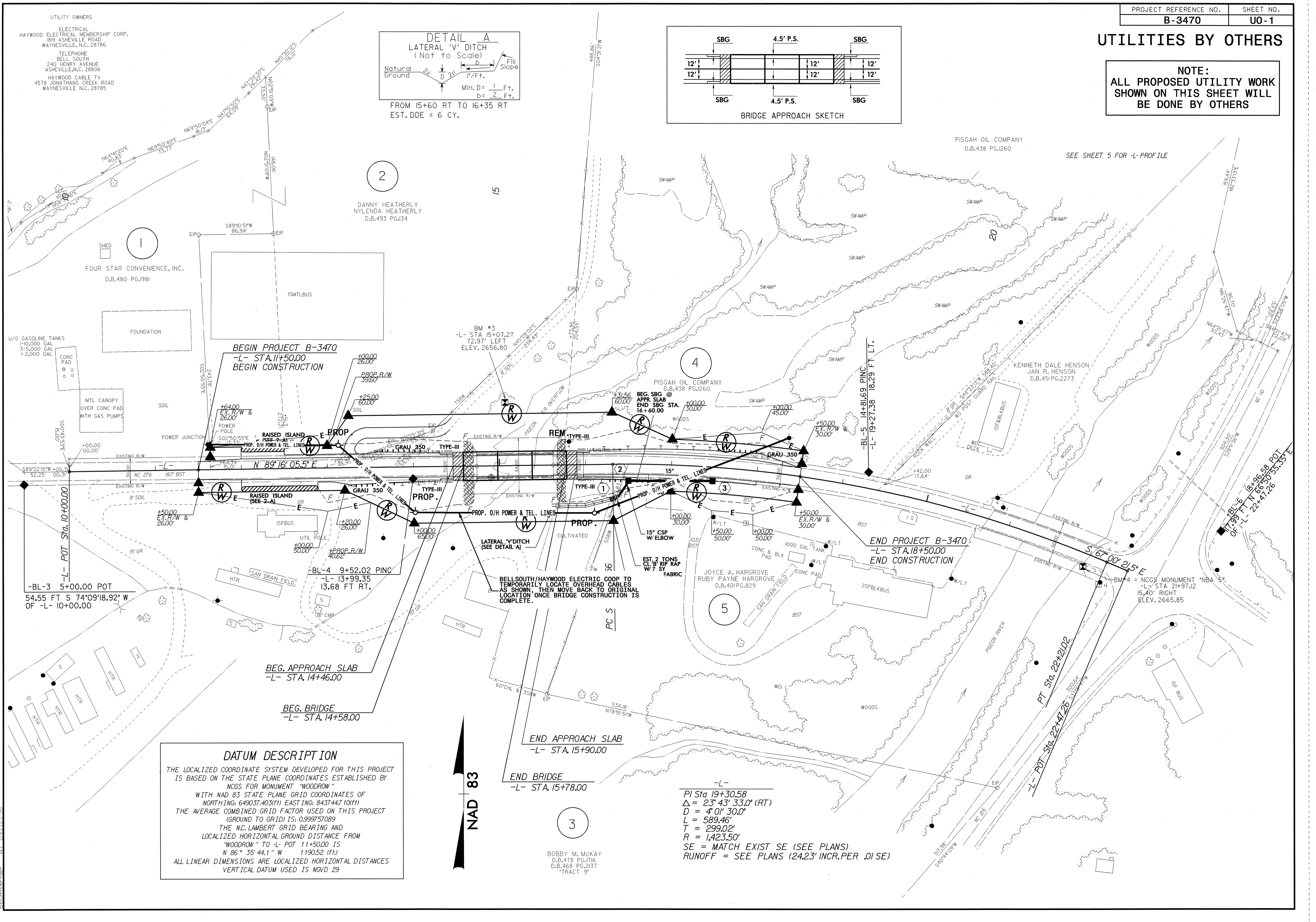
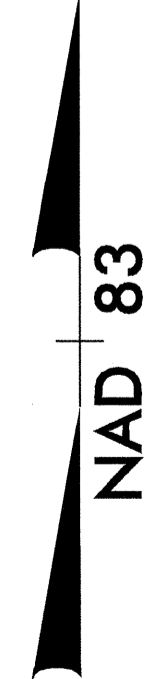
THE LOCALIZED COORDINATE SYSTEM DEVELOPED FOR THIS PROJECT IS BASED ON THE STATE PLANE COORDINATES ESTABLISHED BY NCGS FOR MONUMENT "WOODROW"

WITH NAD 83 STATE PLANE GRID COORDINATES OF
NORTHING: 649037.4031(1) EASTING: 843744.7101(1)

THE AVERAGE COMBINED GRID FACTOR USED ON THIS PROJECT (GROUND TO GRID) IS: 0.999757089

THE N.C. LAMBERT GRID BEARING AND LOCALIZED HORIZONTAL GROUND DISTANCE FROM "WOODROW" TO -L- POT 11+50.00 IS
N 86° 35' 44.1" W 1190.52 (ft.)

ALL LINEAR DIMENSIONS ARE LOCALIZED HORIZONTAL DISTANCES
VERTICAL DATUM USED IS NGVD 29



8/17/99
 10-NOV-2003 09:35
 R:\Utilities\B3470\04_U0_01.dgn
 R:\Utilities\B3470\04_U0_01.dgn
 R:\Utilities\B3470\04_U0_01.dgn

BOBBY M. McKAY
D.B.478 PG.176
D.B.468 PG.2137
TRACT 9

-L-
PI Sta 19+30.58
Δ = 23° 43' 33.0" (RT)
D = 4' 0" 30.0"
L = 589.46'
T = 299.02'
R = 1,423.50'
SE = MATCH EXIST SE (SEE PLANS)
RUNOFF = SEE PLANS (24.23' INCR. PER .01 SE)