

SEE SHEET 5 FOR -L- PROFILE
SEE SHEET 2-A FOR CONST
DIMENSIONS & SE LAYOUT
SEE SHEETS S-1 THRU S-22
FOR STRUCTURE PLANS

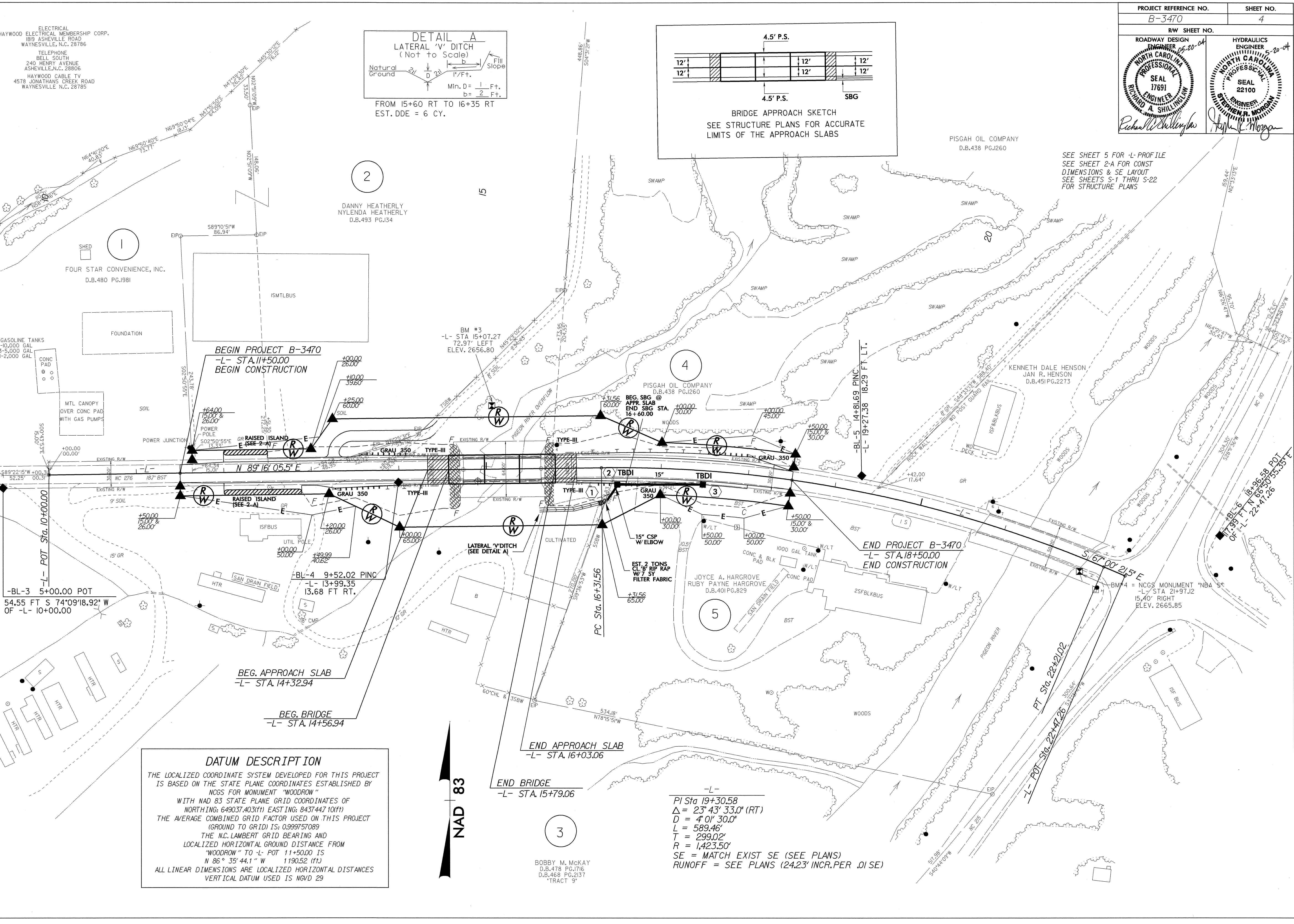
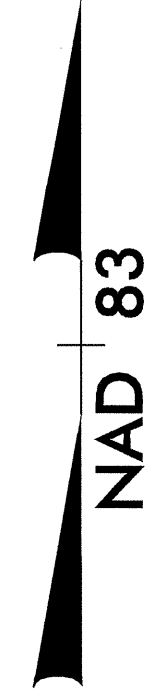
PISGAH OIL COMPANY
D.B.438 PG.1260

KENNETH DALE HENSON
JAN R. HENSON
D.B.451 PG.2273

JOYCE A. HARGROVE
RUBY PAYNE HARGROVE
D.B.401 PG.829

BOBBY M. MCKAY
D.B.478 PG.1716
D.B.468 PG.2137
TRACT 9

DATUM DESCRIPTION
THE LOCALIZED COORDINATE SYSTEM DEVELOPED FOR THIS PROJECT IS BASED ON THE STATE PLANE COORDINATES ESTABLISHED BY NCGS FOR MONUMENT "WOODROW"
WITH NAD 83 STATE PLANE GRID COORDINATES OF
NORTHING: 649037.4031(1) EASTING: 843744.710(1)
THE AVERAGE COMBINED GRID FACTOR USED ON THIS PROJECT (GROUND TO GRID) IS: 0.99975089
THE N.C. LAMBERT GRID BEARING AND LOCALIZED HORIZONTAL GROUND DISTANCE FROM "WOODROW" TO -L- POT 11+50.00 IS
N 86° 35' 44.1" W 1190.52 (11)
ALL LINEAR DIMENSIONS ARE LOCALIZED HORIZONTAL DISTANCES
VERTICAL DATUM USED IS NGVD 29



8/17/99
REVISIONS
20 MAY 2004 11:37
R.Shillington
20 MAY 2004 11:37
R.Shillington

ELECTRICAL
HAYWOOD ELECTRICAL MEMBERSHIP CORP.
1819 ASHEVILLE ROAD
WAYNESVILLE, N.C. 28786
TELEPHONE
BELL SOUTH
240 HENRY AVENUE
ASHEVILLE, N.C. 28806
HAYWOOD CABLE TV
4578 JONATHAN'S CREEK ROAD
WAYNESVILLE, N.C. 28785

FOUR STAR CONVENIENCE, INC.
D.B.480 PG.1981

DANNY HEATHERLY
NYLEDA HEATHERLY
D.B.493 PG.134

PISGAH OIL COMPANY
D.B.438 PG.1260