

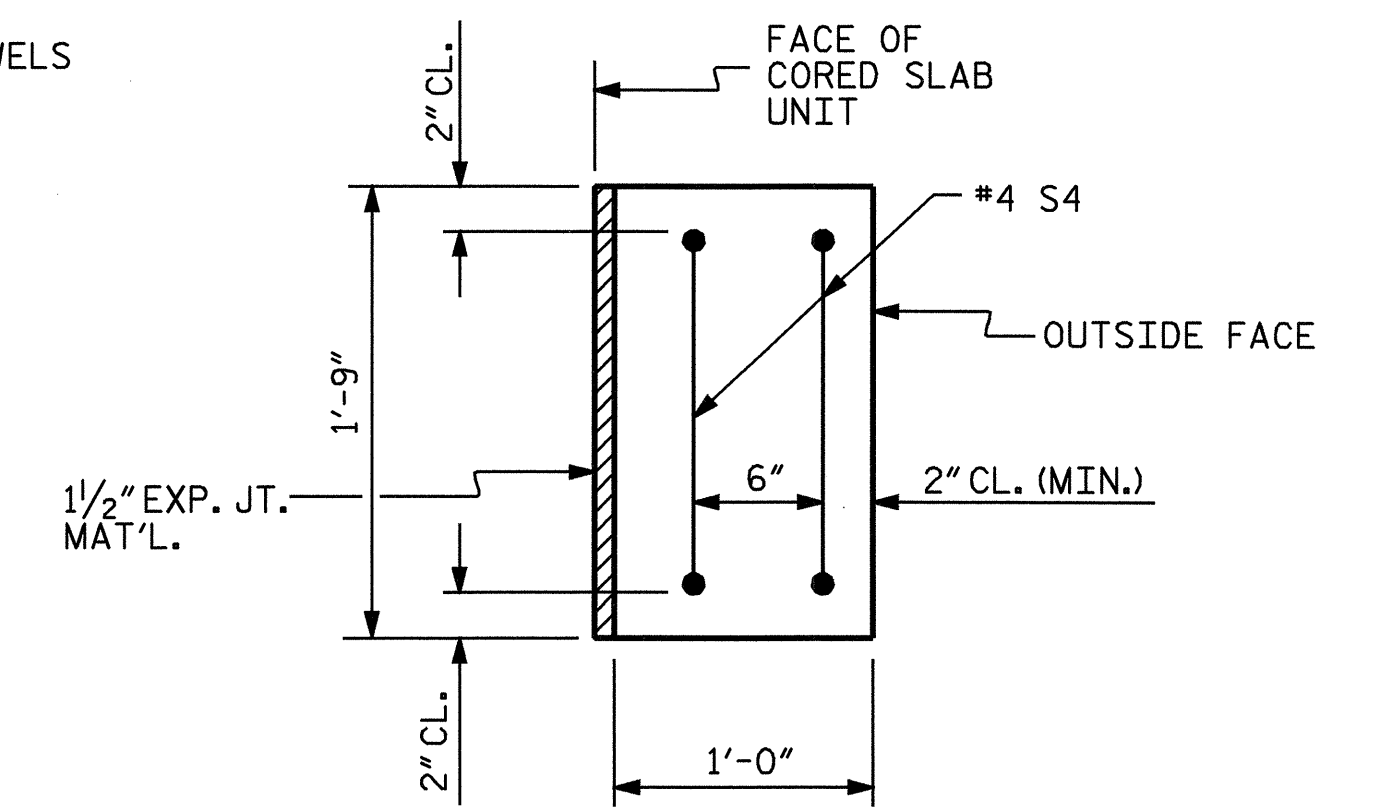
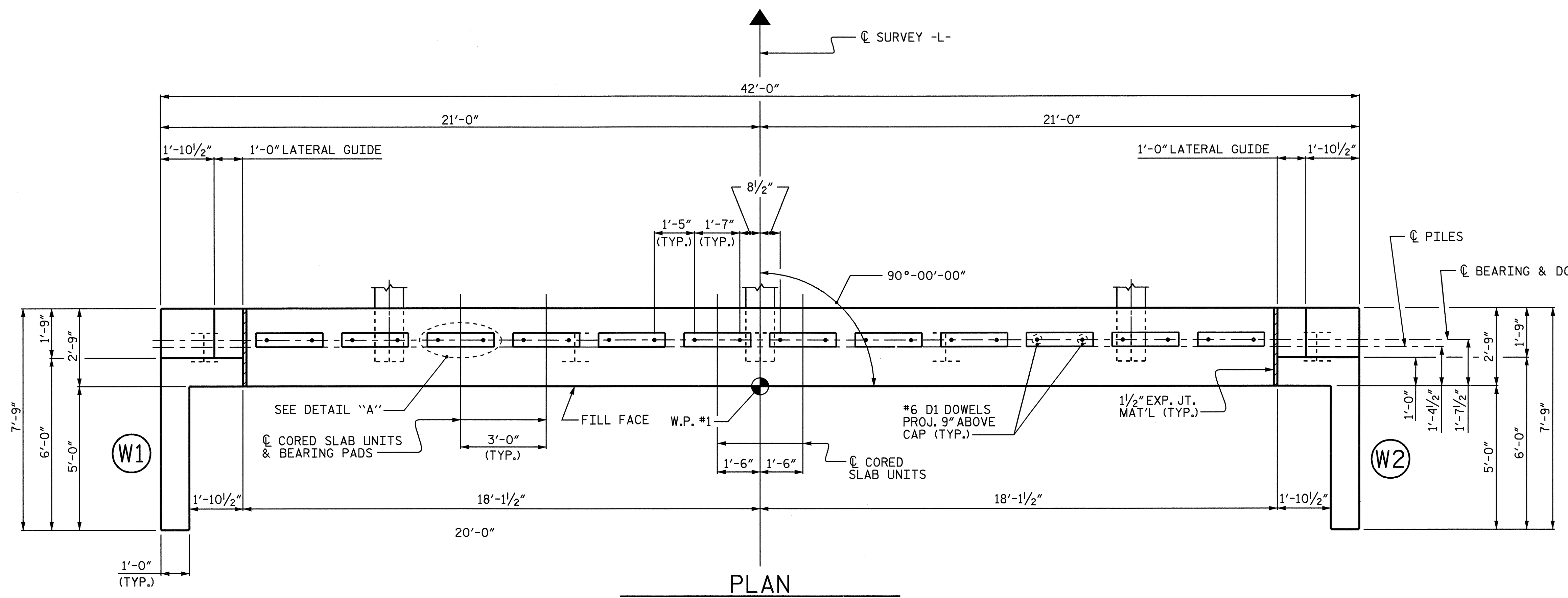
NOTES:

STIRRUPS IN CAP MAY BE SHIFTED AS NECESSARY TO CLEAR ANCHOR BOLTS.

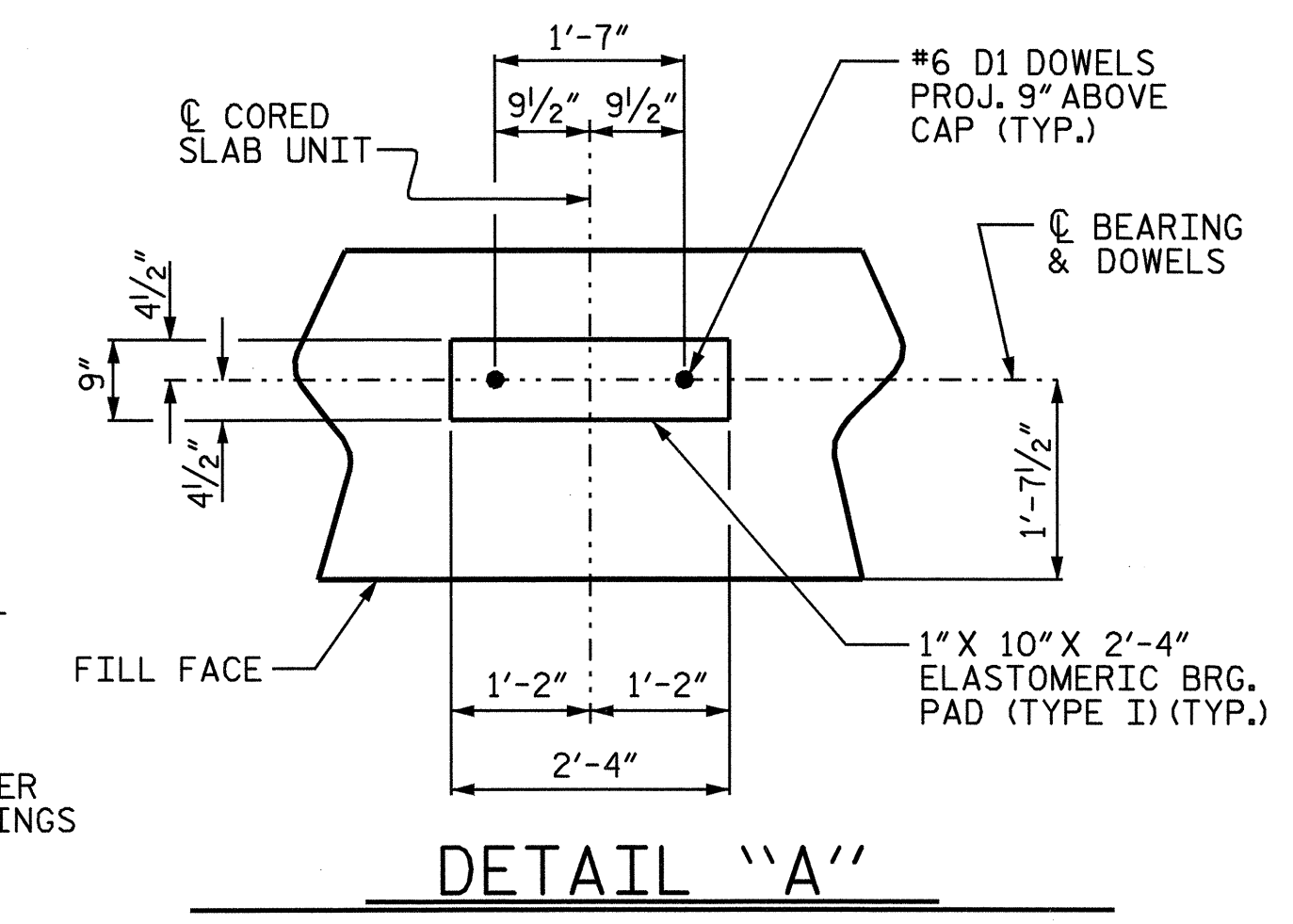
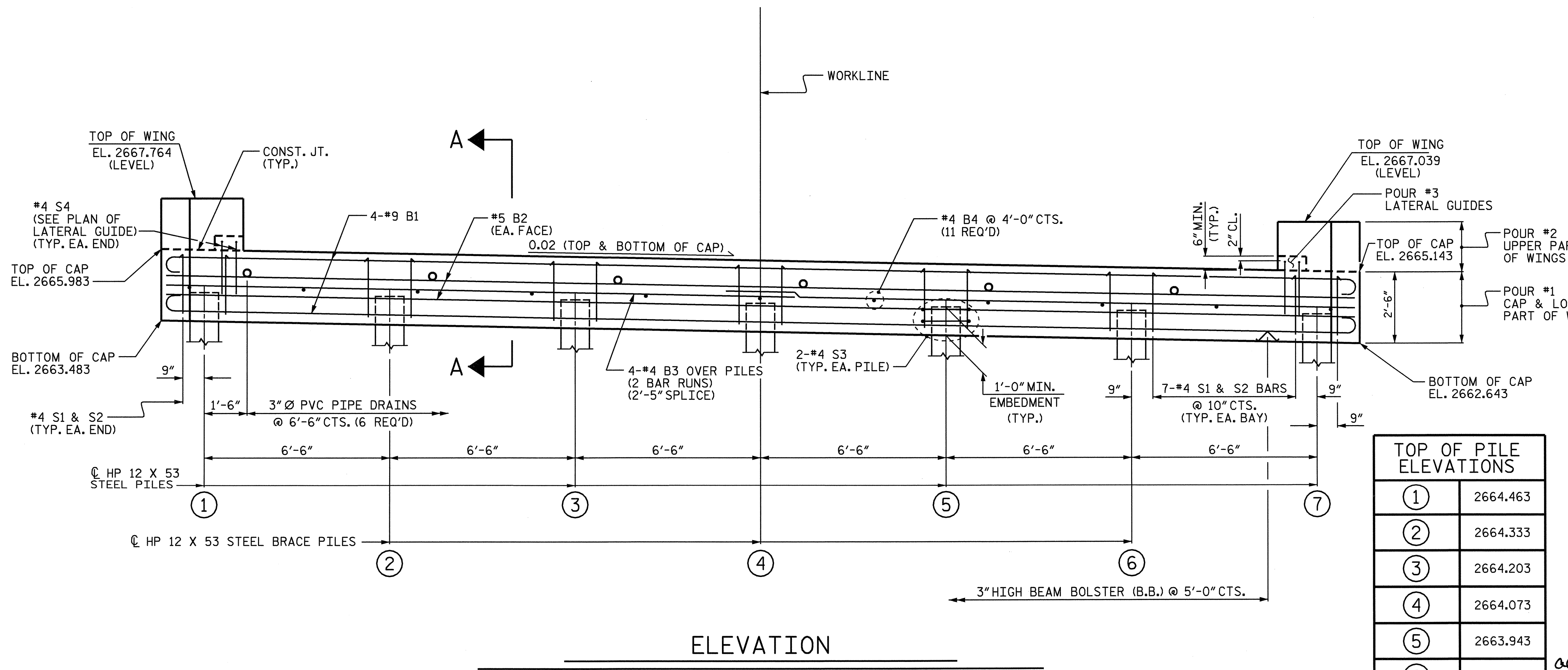
PIPE DRAINS MAY BE SHIFTED SLIGHTLY AS NECESSARY TO CLEAR REINFORCING STEEL AND DOWELS.

THE LATERAL GUIDES AT EACH END OF THE CAP ARE NOT TO BE POURED UNTIL AFTER THE CORED SLAB UNITS ARE IN PLACE.

THE CONTRACTOR SHALL PROVIDE FOR INSTALLATION OF THE 4" DIAMETER DRAIN PIPE THROUGH THE WING WALL AS REQUIRED FOR REINFORCED BRIDGE APPROACH FILLS. SEE THE ROADWAY PLANS. REINFORCING STEEL IN THE WING WALL MAY BE SHIFTED AS NECESSARY TO CLEAR THE DRAIN PIPE.

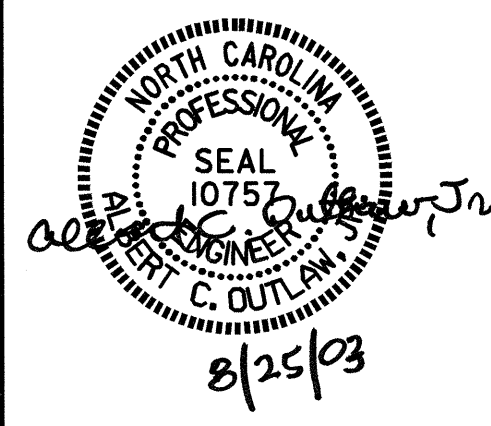


PLAN OF LATERAL GUIDE
 (RIGHT LATERAL GUIDE SHOWN, LEFT LATERAL GUIDE SIMILAR)



PROJECT NO. B-3470
HAYWOOD COUNTY
STATION: 15+18.00 -L-
 SHEET 1 OF 3

TOP OF PILE ELEVATIONS	
①	2664.463
②	2664.333
③	2664.203
④	2664.073
⑤	2663.943
⑥	2663.813
⑦	2663.683



STATE OF NORTH CAROLINA
 DEPARTMENT OF TRANSPORTATION
 RALEIGH

SUBSTRUCTURE
END BENT NO. 1

REVISIONS						SHEET NO.
NO.	BY:	DATE:	NO.	BY:	DATE:	S-8
1			3			TOTAL SHEETS 22
2			4			

DRAWN BY: P.C. BREWER DATE: 1/30/03
 CHECKED BY: S.B. WILLIAMS DATE: 3/17/03