

DATUM DESCRIPTION

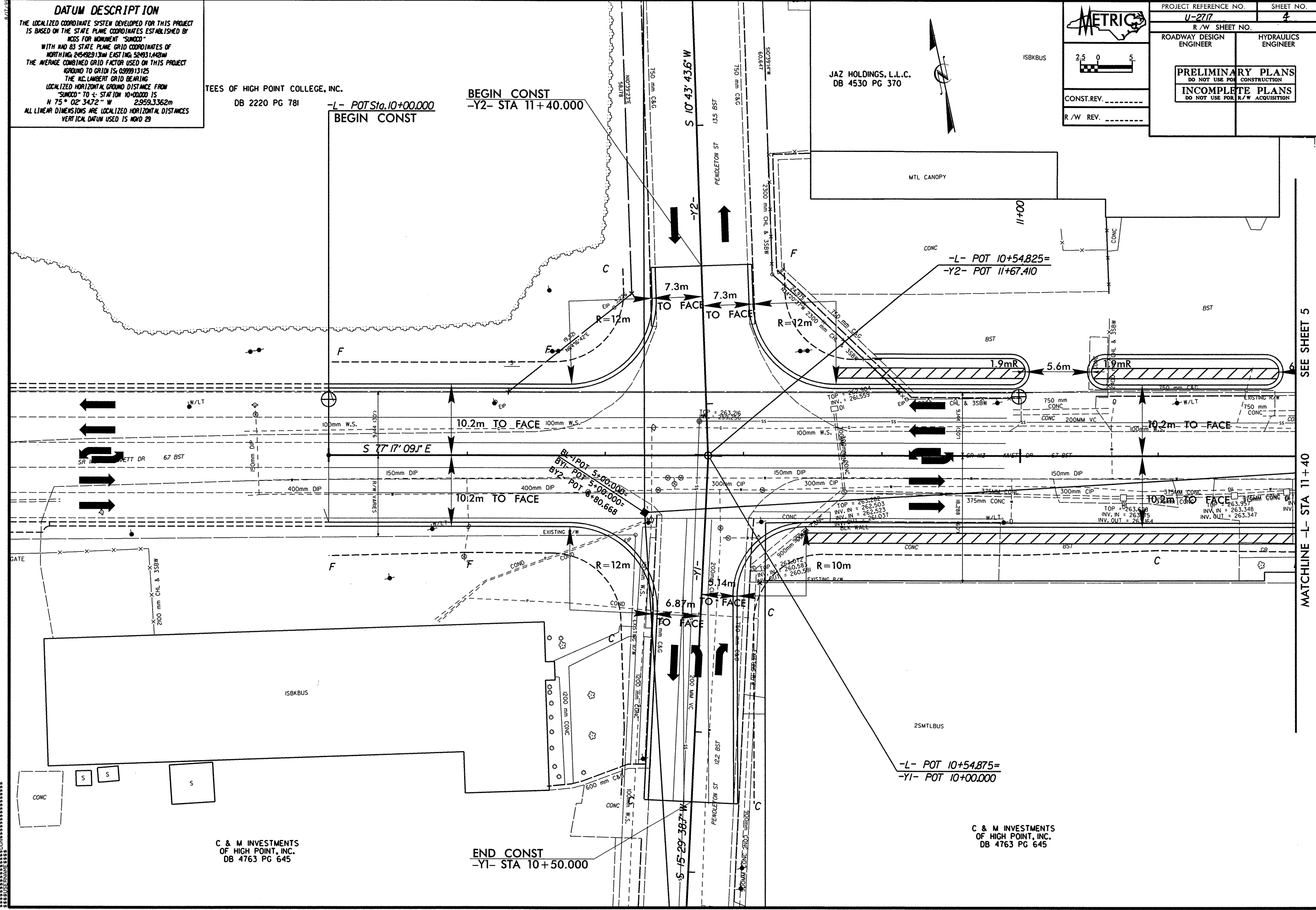
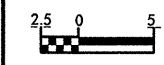
THE LOCALIZED COORDINATE SYSTEM DEVELOPED FOR THIS PROJECT IS BASED ON THE STATE PLANE COORDINATES ESTABLISHED BY NCDS FOR MONUMENT "SUMCOO"
WITH HAD 83 STATE PLANE GRID COORDINATES OF NORTHING 2454829.13m EASTING 524931.42m
THE AVERAGE COMBINED GRID FACTOR USED ON THIS PROJECT (GROUND TO GRID) IS: 0.999913125
THE N.C. LAMBERT GRID BEARING
LOCALIZED HORIZONTAL GROUND DISTANCE FROM "SUMCOO" TO +L- STATION 10+00.000 IS
N 75° 02' 34.72" W 2,959.3362m
ALL LINEAR DIMENSIONS ARE LOCALIZED HORIZONTAL DISTANCES
VERTICAL DATUM USED IS NGVD 29

TEES OF HIGH POINT COLLEGE, INC.
DB 2220 PG 781

BEGIN CONST
-Y2- STA 11+40.000

-L- POT Sta. 10+00.000
BEGIN CONST

PROJECT REFERENCE NO. U-2717		SHEET NO. 4	
R/W SHEET NO.			
ROADWAY DESIGN ENGINEER		HYDRAULICS ENGINEER	
PRELIMINARY PLANS DO NOT USE FOR CONSTRUCTION INCOMPLETE PLANS DO NOT USE FOR R/W ACQUISITION			
CONST. REV. _____		R/W REV. _____	



C & M INVESTMENTS
OF HIGH POINT, INC.
DB 4763 PG 645

END CONST
-Y1- STA 10+50.000

C & M INVESTMENTS
OF HIGH POINT, INC.
DB 4763 PG 645

SEE SHEET 5
MATCHLINE -L- STA 11+40