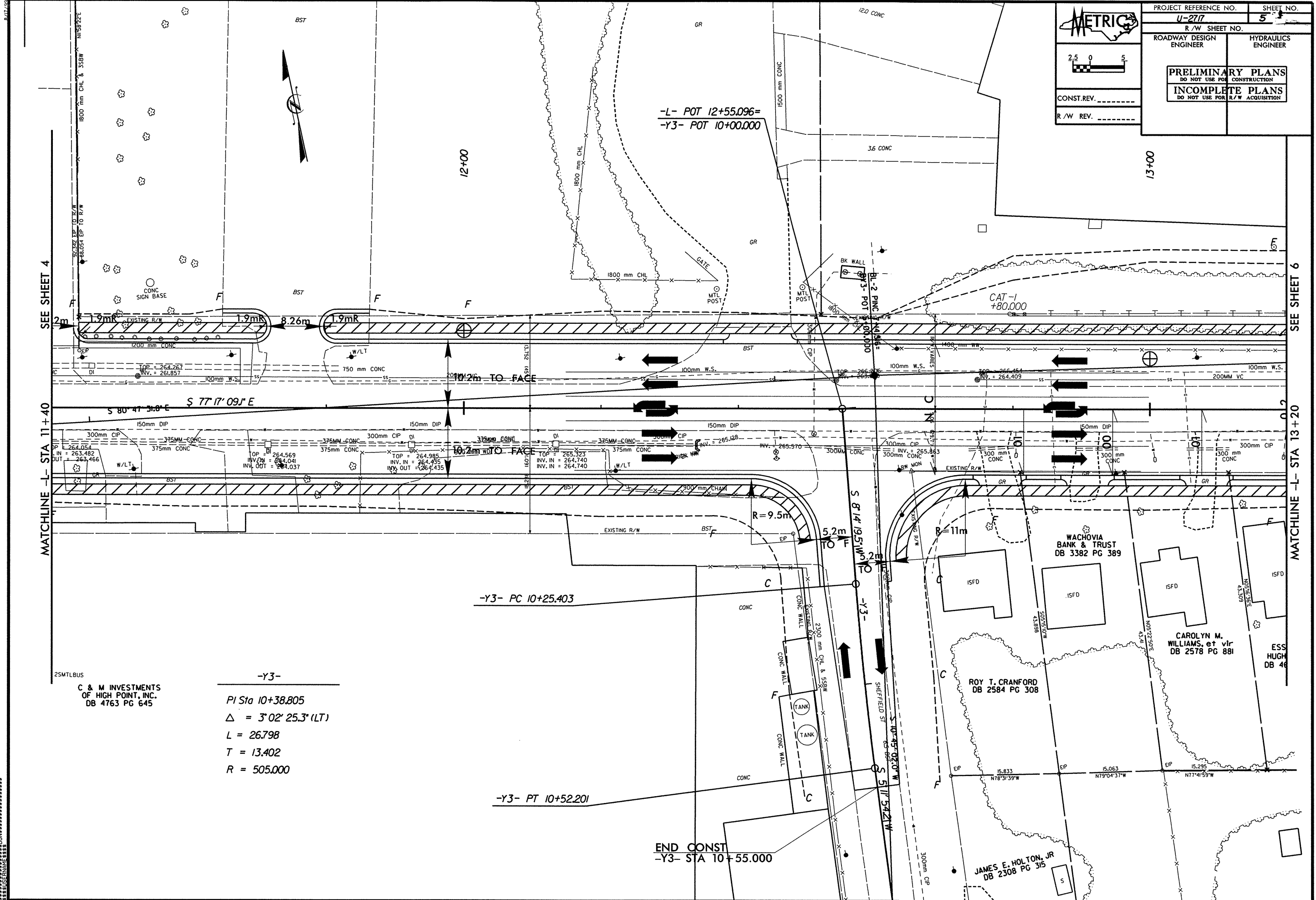


PROJECT REFERENCE NO. U-2717 SHEET NO. 5  
 R/W SHEET NO. ROADWAY DESIGN ENGINEER HYDRAULICS ENGINEER  
 PRELIMINARY PLANS DO NOT USE FOR CONSTRUCTION  
 INCOMPLETE PLANS DO NOT USE FOR R/W ACQUISITION  
 CONST. REV. \_\_\_\_\_  
 R/W REV. \_\_\_\_\_



SEE SHEET 4

SEE SHEET 6

MATCHLINE -L- STA 11+40

MATCHLINE -L- STA 13+20

C & M INVESTMENTS OF HIGH POINT, INC. DB 4763 PG 645

-Y3-  
 PI Sta 10+38.805  
 $\Delta = 3^{\circ}02'25.3''$  (LT)  
 L = 26.798  
 T = 13.402  
 R = 505.000

-Y3- PC 10+25.403

-Y3- PT 10+52.201

END CONST  
 -Y3- STA 10+55.000

WACHOVIA BANK & TRUST DB 3382 PG 389

ROY T. CRANFORD DB 2584 PG 308

CAROLYN M. WILLIAMS, et vir DB 2578 PG 881

JAMES E. HOLTON, JR DB 2308 PG 315

\*\*\*\*\*SYSTEMS\*\*\*\*\*  
 \*\*\*\*\*PLANNING\*\*\*\*\*  
 \*\*\*\*\*DESIGN\*\*\*\*\*  
 \*\*\*\*\*CONSTRUCTION\*\*\*\*\*