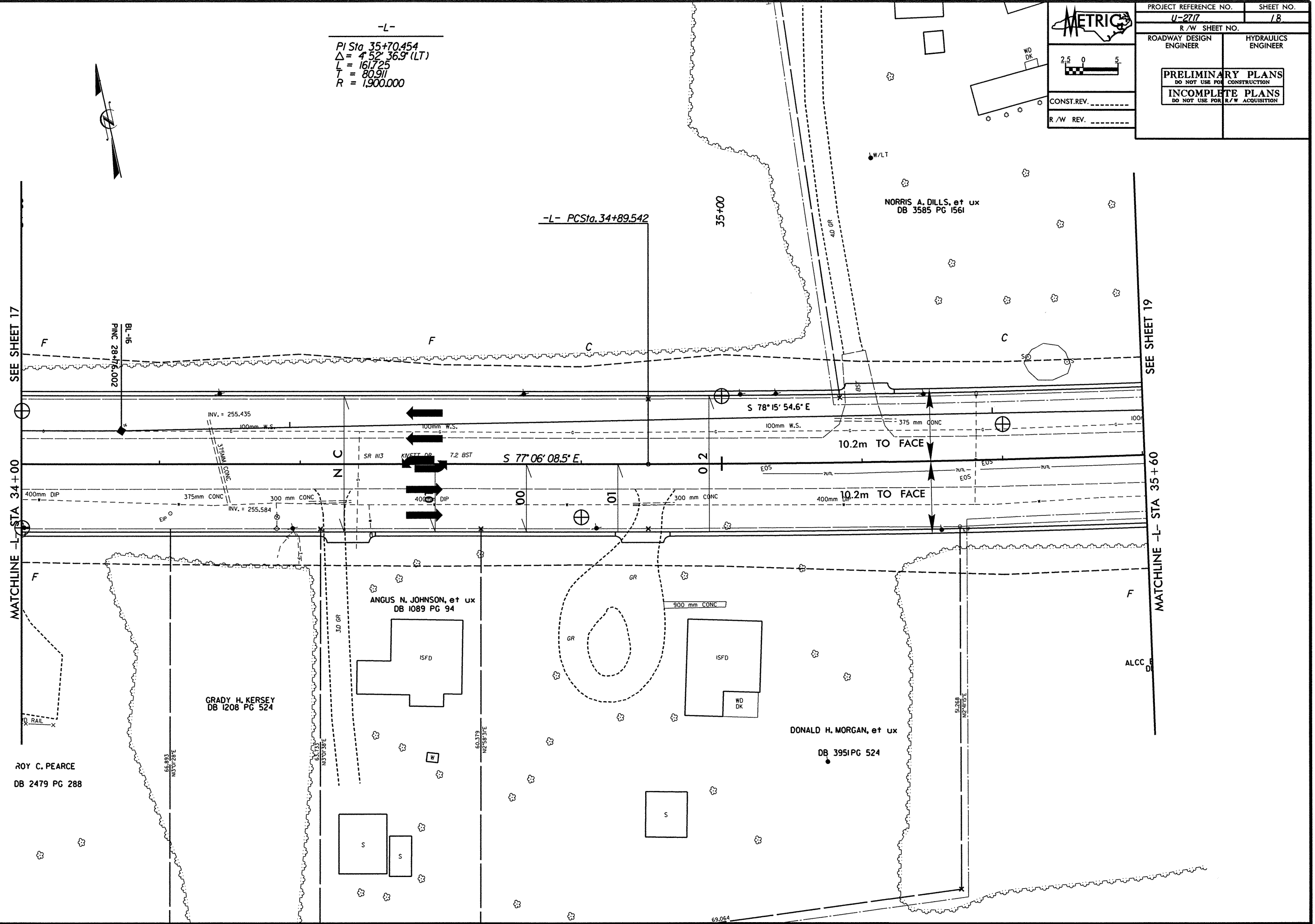


METRIC

CONST. REV. _____
R/W REV. _____

| | |
|---|------------------------|
| PROJECT REFERENCE NO. U-2717 | SHEET NO. 18 |
| R/W SHEET NO. | |
| ROADWAY DESIGN ENGINEER | HYDRAULICS ENGINEER |
| PRELIMINARY PLANS DO NOT USE FOR CONSTRUCTION | |
| INCOMPLETE PLANS DO NOT USE FOR R/W ACQUISITION | |

-L-
PI Sta 35+70.454
 $\Delta = 452' 36.9" (LT)$
 $L = 161.725$
 $T = 80.911$
 $R = 1,900.000$



SEE SHEET 17

SEE SHEET 19

MATCHLINE -L- STA 34+00

MATCHLINE -L- STA 35+60

ROY C. PEARCE
DB 2479 PG 288

GRADY H. KERSEY
DB 1208 PG 524

ANGUS N. JOHNSON, et ux
DB 1089 PG 94

DONALD H. MORGAN, et ux
DB 3951 PG 524

*****SYSTEMS*****
*****SOFTWARE*****
*****PLANS*****
*****DATE*****