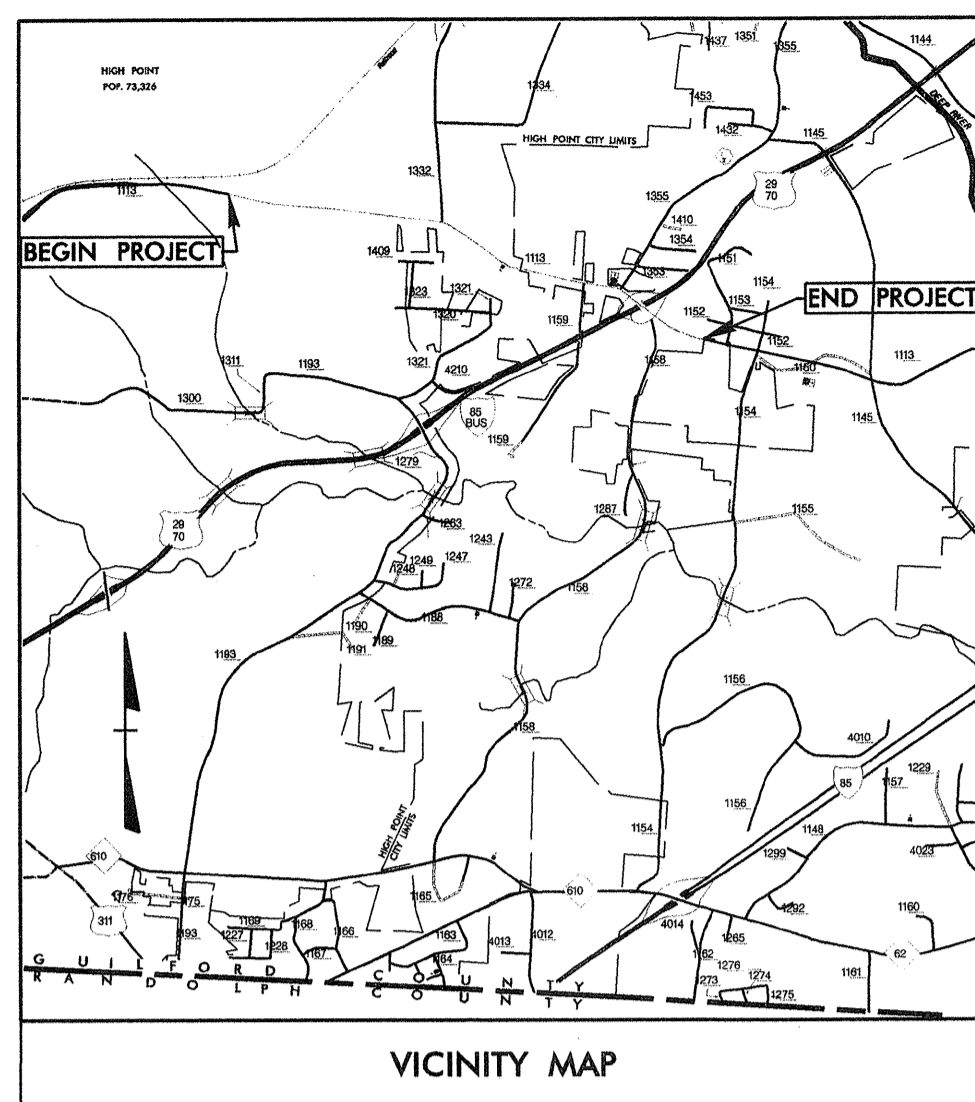


09/07/09

TIP: U-2717

PROJECT: C201009

See Sheet I-A For Index of Sheets



STATE OF NORTH CAROLINA
DIVISION OF HIGHWAYS

**UTILITY CONSTRUCTION PLANS
GUILFORD COUNTY**

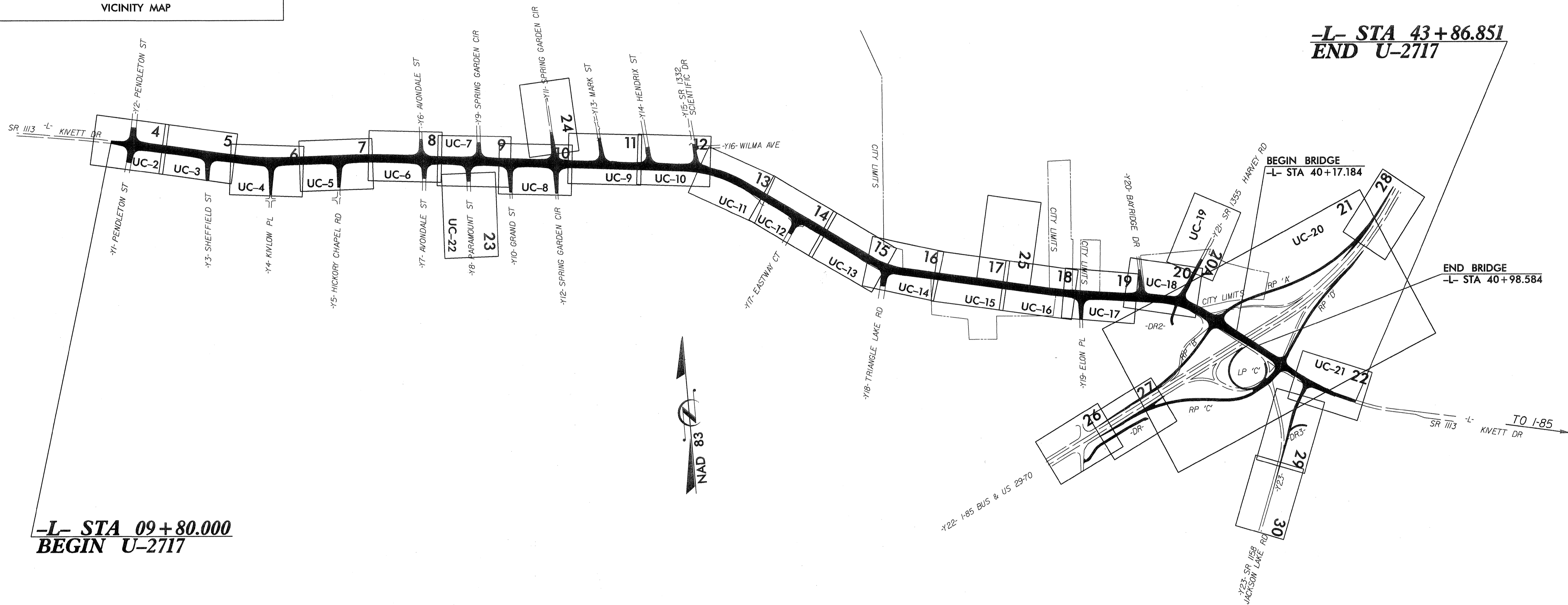
LOCATION: HIGH POINT - SR 1113(KIVETT DRIVE) FROM
PENDLETON ST. TO US 29-70, I-85 BUS

TYPE OF WORK: UTILITY RELOCATIONS

T.I.P. NO.	SHEET NO.
U-2717	UC-01



ALL DIMENSIONS IN THESE PLANS ARE IN METERS AND/OR MILLIMETERS UNLESS OTHERWISE SHOWN

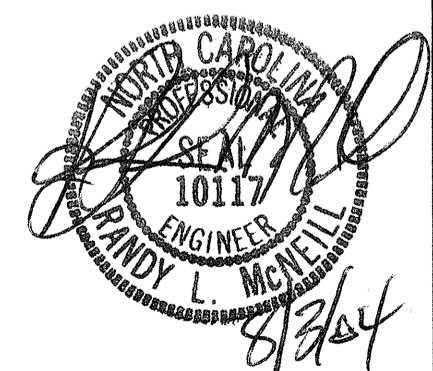


A PORTION OF THIS PROJECT IS WITHIN THE MUNICIPAL BOUNDARIES OF HIGH POINT

INDEX OF SHEETS	
SHEET NO.	DESCRIPTION
UC-01	TITLE SHEET
UC-02 THRU UC-22	UTILITY CONSTRUCTION PLAN SHEETS
UC-23 THRU UC-25	UTILITY CONSTRUCTION PROFILE SHEETS
UC-26 THRU UC-27	DETAIL SHEETS

WATER AND SEWER OWNERS ON PROJECT

WATER - CITY OF HIGH POINT
SEWER - CITY OF HIGH POINT



dmp

PREPARED IN THE OFFICE OF:
DAVIS-MARTIN-POWELL AND ASSOCIATES, INC.

6415 OLD PLANK ROAD
HIGH POINT, NC 27265
PHONE (336) 886-4821
FAX (336) 886-4458

Randy McNeill, P.E. UTILITIES PROJECT MANAGER
Andy Larrick, P.E. UTILITIES PROJECT ENGINEER
Ralph Lowe UTILITIES PROJECT DESIGNER