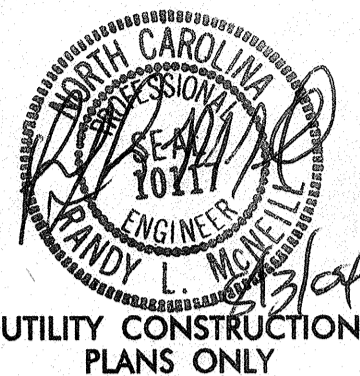
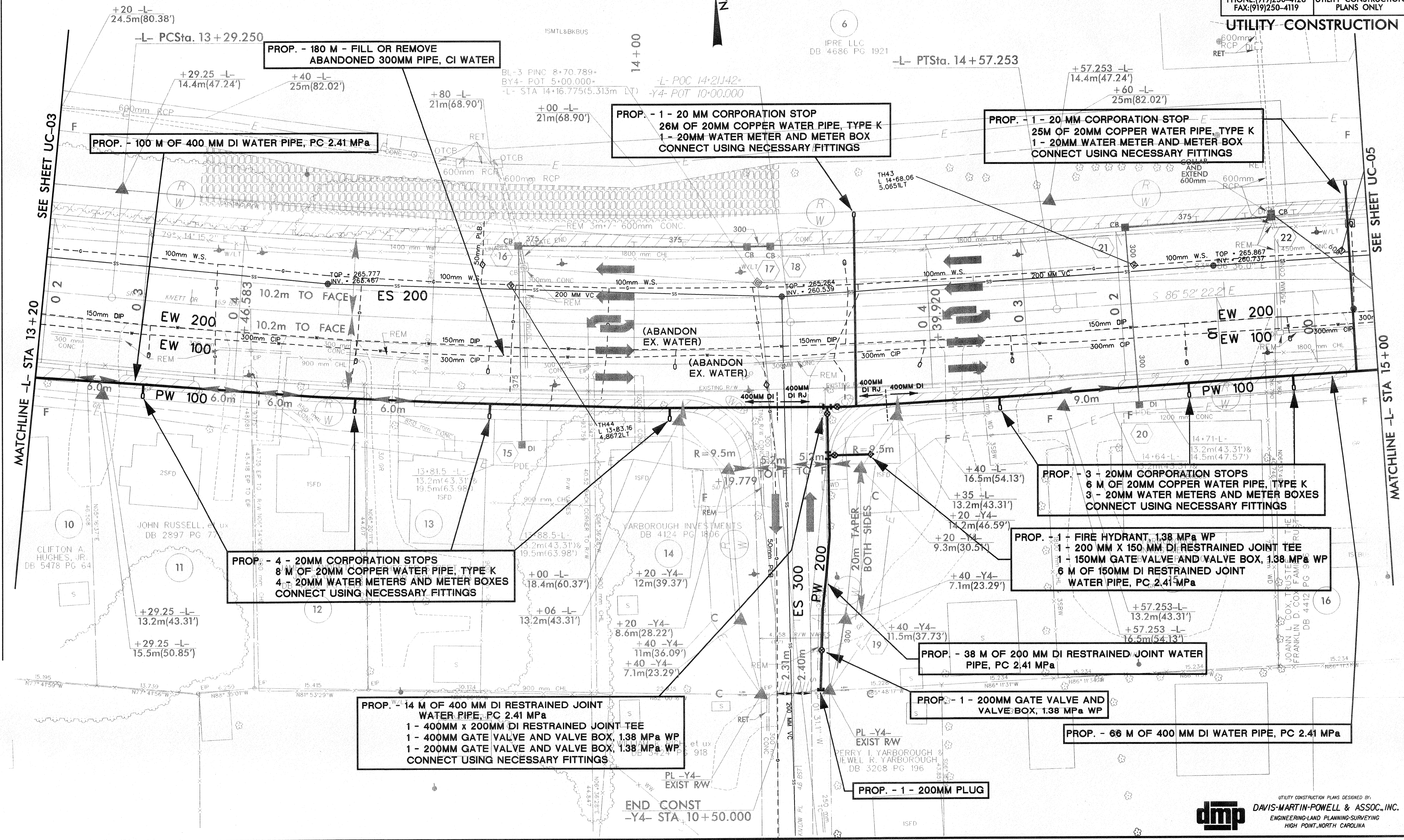


PROJECT REFERENCE NO. U-2717	SHEET NO. UC-04
DESIGNED BY: DMP	
DRAWN BY: DMP	
CHECKED BY: DMP	
APPROVED BY:	
REVISED:	
NORTH CAROLINA DEPARTMENT OF TRANSPORTATION	
DESIGN SERVICES UNIT PHONE: (919) 250-4128 FAX: (919) 250-4119	
UTILITY CONSTRUCTION PLANS ONLY	



NAD 83

-L-
PI Sta 13+93.401
Δ = 97° 35' 13" (LT)
L = 128.003
T = 64.151
R = 765.000
SE = 04
INC = 13



SEE SHEET UC-03

MATCHLINE -L- STA 13+20

SEE SHEET UC-05

MATCHLINE -L- STA 15+00

PROP. - 180 M - FILL OR REMOVE
ABANDONED 300MM PIPE, CI WATER

PROP. - 100 M OF 400 MM DI WATER PIPE, PC 2.41 MPa

PROP. - 1 - 20 MM CORPORATION STOP
26M OF 20MM COPPER WATER PIPE, TYPE K
1 - 20MM WATER METER AND METER BOX
CONNECT USING NECESSARY FITTINGS

PROP. - 1 - 20-MM CORPORATION STOP
25M OF 20MM COPPER WATER PIPE, TYPE K
1 - 20MM WATER METER AND METER BOX
CONNECT USING NECESSARY FITTINGS

PROP. - 3 - 20MM CORPORATION STOPS
6 M OF 20MM COPPER WATER PIPE, TYPE K
3 - 20MM WATER METERS AND METER BOXES
CONNECT USING NECESSARY FITTINGS

PROP. - 1 - FIRE HYDRANT, 1.38 MPa WP
1 - 200 MM X 150 MM DI RESTRAINED JOINT TEE
1 - 150MM GATE VALVE AND VALVE BOX, 1.38 MPa WP
6 M OF 150MM DI RESTRAINED JOINT
WATER PIPE, PC 2.41 MPa

PROP. - 4 - 20MM CORPORATION STOPS
8 M OF 20MM COPPER WATER PIPE, TYPE K
4 - 20MM WATER METERS AND METER BOXES
CONNECT USING NECESSARY FITTINGS

PROP. - 14 M OF 400 MM DI RESTRAINED JOINT
WATER PIPE, PC 2.41 MPa
1 - 400MM x 200MM DI RESTRAINED JOINT TEE
1 - 400MM GATE VALVE AND VALVE BOX, 1.38 MPa WP
1 - 200MM GATE VALVE AND VALVE BOX, 1.38 MPa WP
CONNECT USING NECESSARY FITTINGS

PROP. - 38 M OF 200 MM DI RESTRAINED JOINT WATER
PIPE, PC 2.41 MPa

PROP. - 1 - 200MM GATE VALVE AND
VALVE BOX, 1.38 MPa WP

PROP. - 66 M OF 400 MM DI WATER PIPE, PC 2.41 MPa

PROP. - 1 - 200MM PLUG

END CONST
-Y4- STA 10+50.000