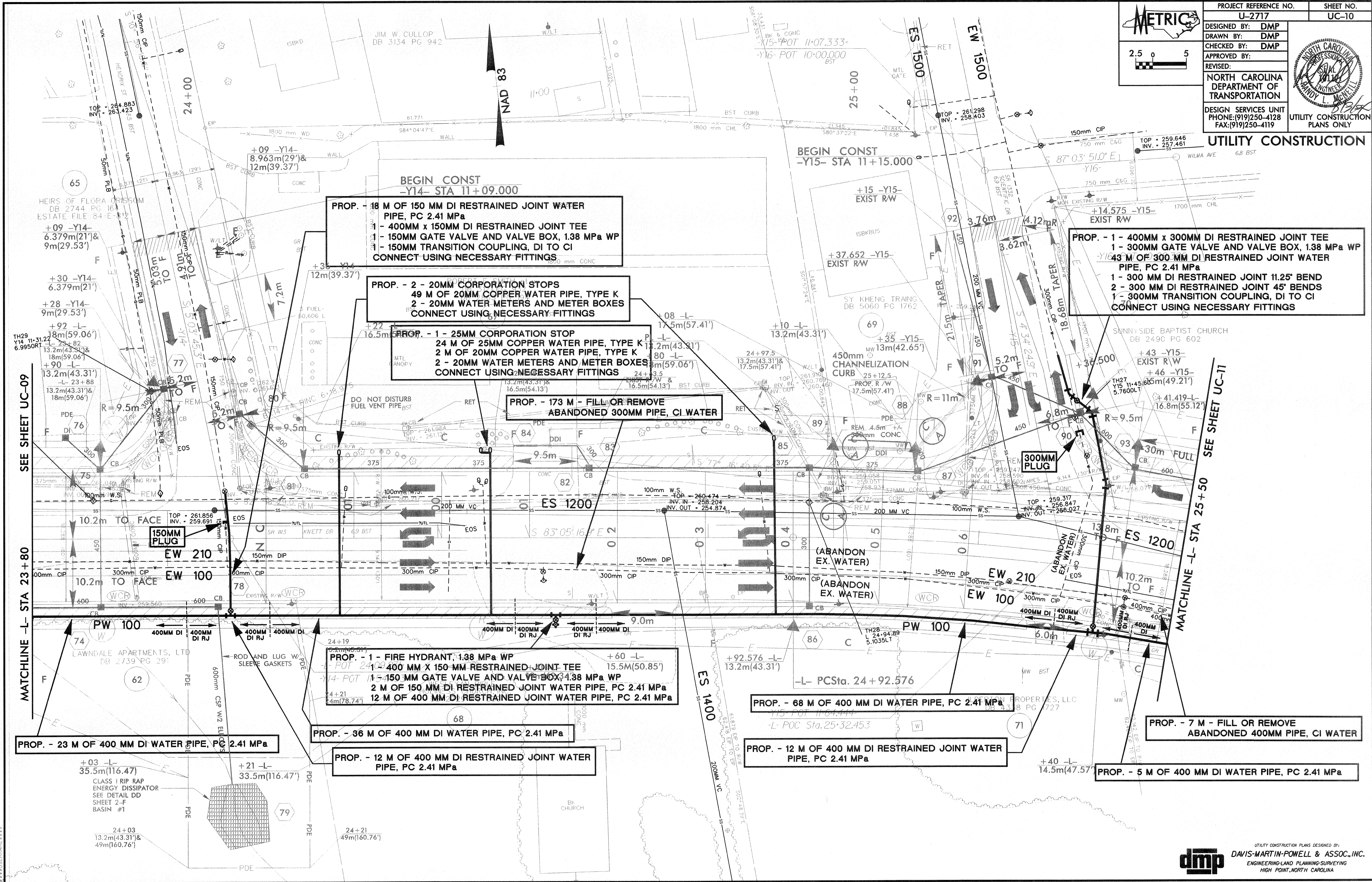


PROJECT REFERENCE NO.	U-2717	SHEET NO.	UC-10
DESIGNED BY:	DMP		
DRAWN BY:	DMP		
CHECKED BY:	DMP		
APPROVED BY:			
REVISED:			
NORTH CAROLINA DEPARTMENT OF TRANSPORTATION			
DESIGN SERVICES UNIT			
PHONE: (919) 250-4128 FAX: (919) 250-4119			
UTILITY CONSTRUCTION PLANS ONLY			



BEGIN CONST -Y14- STA 11+09.000

PROP. - 18 M OF 150 MM DI RESTRAINED JOINT WATER PIPE, PC 2.41 MPa
 1 - 400MM x 150MM DI RESTRAINED JOINT TEE
 1 - 150MM GATE VALVE AND VALVE BOX, 1.38 MPa WP
 1 - 150MM TRANSITION COUPLING, DI TO CI
 CONNECT USING NECESSARY FITTINGS

PROP. - 2 - 20MM CORPORATION STOPS
 49 M OF 20MM COPPER WATER PIPE, TYPE K
 2 - 20MM WATER METERS AND METER BOXES
 CONNECT USING NECESSARY FITTINGS

PROP. - 1 - 25MM CORPORATION STOP
 24 M OF 25MM COPPER WATER PIPE, TYPE K
 2 M OF 20MM COPPER WATER PIPE, TYPE K
 2 - 20MM WATER METERS AND METER BOXES
 CONNECT USING NECESSARY FITTINGS

PROP. - 173 M - FILL OR REMOVE ABANDONED 300MM PIPE, CI WATER

PROP. - 1 - 400MM x 300MM DI RESTRAINED JOINT TEE
 1 - 300MM GATE VALVE AND VALVE BOX, 1.38 MPa WP
 43 M OF 300 MM DI RESTRAINED JOINT WATER PIPE, PC 2.41 MPa
 1 - 300 MM DI RESTRAINED JOINT 11.25° BEND
 2 - 300 MM DI RESTRAINED JOINT 45° BENDS
 1 - 300MM TRANSITION COUPLING, DI TO CI
 CONNECT USING NECESSARY FITTINGS

PROP. - 1 - FIRE HYDRANT, 1.38 MPa WP
 1 - 400 MM X 150 MM RESTRAINED JOINT TEE
 1 - 150 MM GATE VALVE AND VALVE BOX, 1.38 MPa WP
 2 M OF 150 MM DI RESTRAINED JOINT WATER PIPE, PC 2.41 MPa
 12 M OF 400 MM DI RESTRAINED JOINT WATER PIPE, PC 2.41 MPa

PROP. - 68 M OF 400 MM DI WATER PIPE, PC 2.41 MPa

PROP. - 12 M OF 400 MM DI RESTRAINED JOINT WATER PIPE, PC 2.41 MPa

PROP. - 7 M - FILL OR REMOVE ABANDONED 400MM PIPE, CI WATER

PROP. - 5 M OF 400 MM DI WATER PIPE, PC 2.41 MPa

MATCHLINE -L- STA 23+80 SEE SHEET UC-09

MATCHLINE -L- STA 25+50 SEE SHEET UC-11

UTILITY CONSTRUCTION