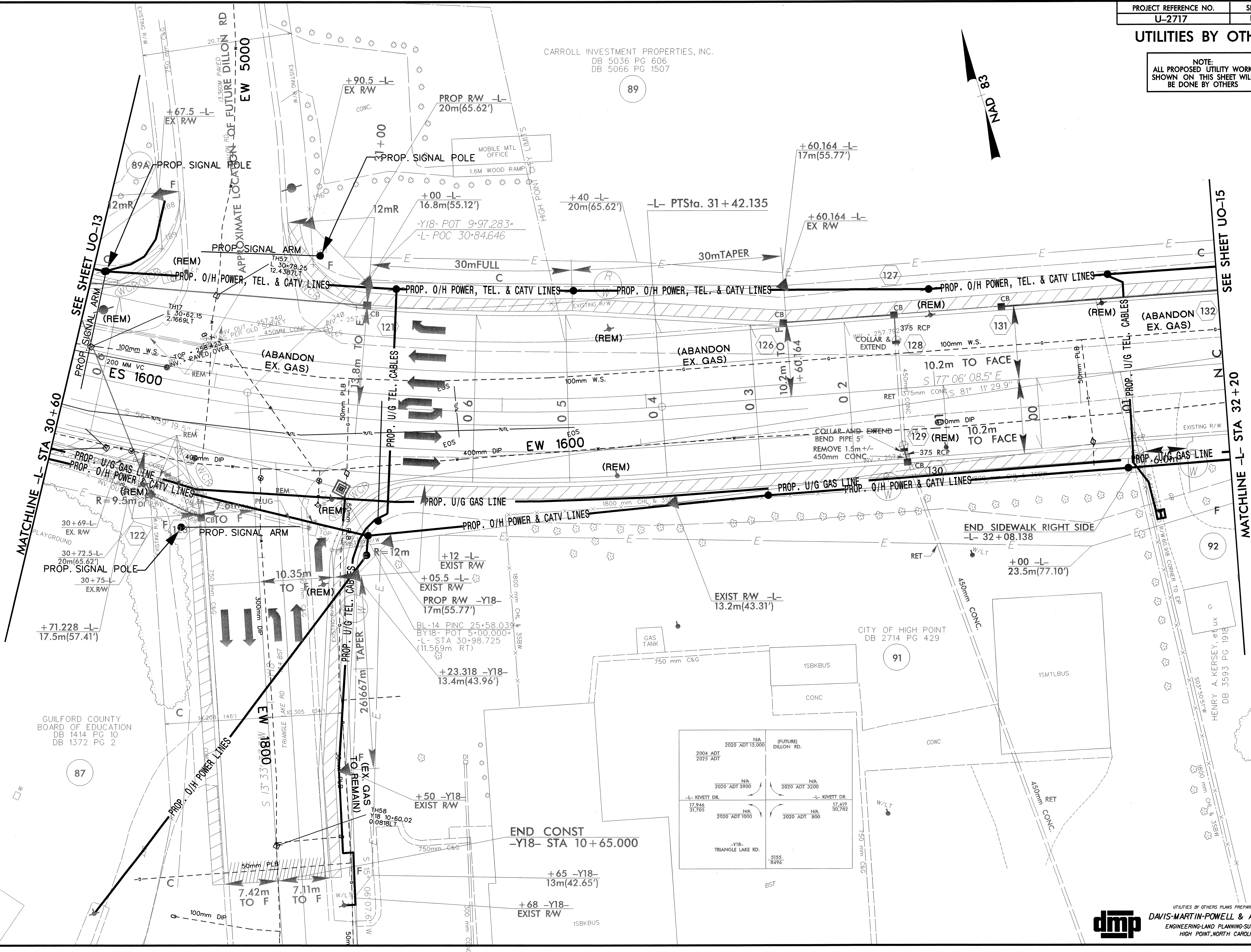
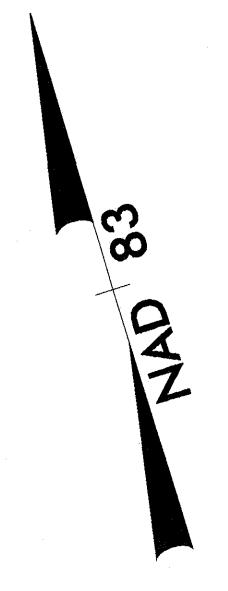


UTILITIES BY OTHERS

NOTE:
ALL PROPOSED UTILITY WORK SHOWN ON THIS SHEET WILL BE DONE BY OTHERS

CARROLL INVESTMENT PROPERTIES, INC.
DB 5036 PG 606
DB 5066 PG 1507



GUILFORD COUNTY BOARD OF EDUCATION
DB 1414 PG 10
DB 1372 PG 2

CITY OF HIGH POINT
DB 2714 PG 429

HENRY A. KERSEY, P.E.
DB 3593 PG 1918

2004 ADT 2025 ADT	2020 ADT 13,000	(FUTURE) DILLON RD.	
	2020 ADT 3900		2020 ADT 3200
-L- KIVETT DR. 17,946 31,705	2020 ADT 1000		2020 ADT 800
	2020 ADT 1000		2020 ADT 800
		-Y18- TRIANGLE LAKE RD.	17,419 30,782
			5155 8496

END CONST
-Y18- STA 10+65.000