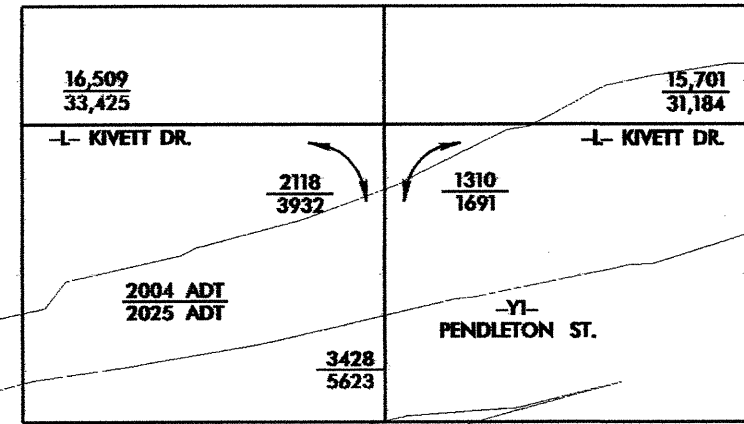


DATUM DESCRIPTION

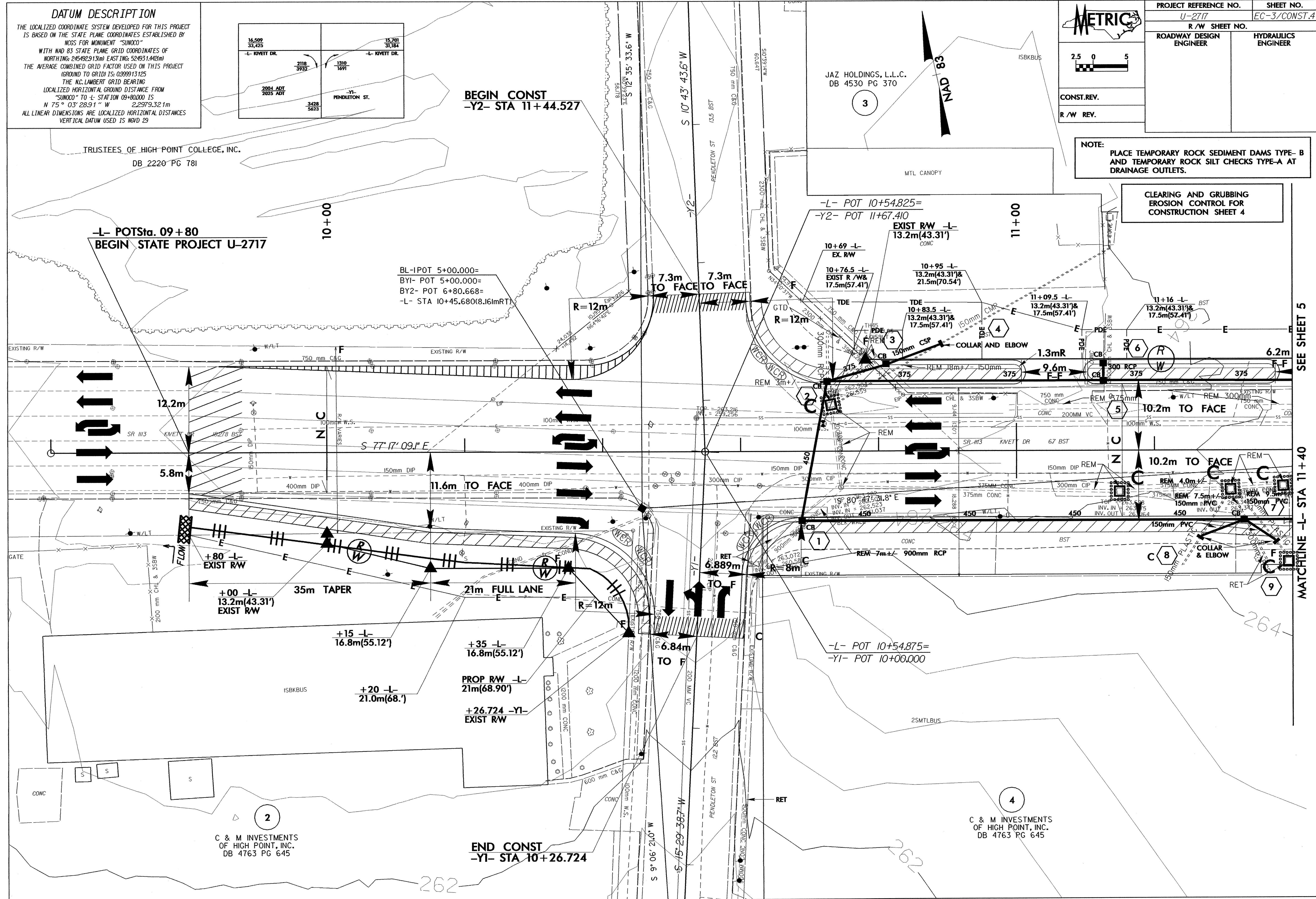
THE LOCALIZED COORDINATE SYSTEM DEVELOPED FOR THIS PROJECT IS BASED ON THE STATE PLANE COORDINATES ESTABLISHED BY NOGS FOR MONUMENT "SUNOCO" WITH NAD 83 STATE PLANE GRID COORDINATES OF NORTHING: 245492913m EASTING: 524931442m THE AVERAGE COMBINED GRID FACTOR USED ON THIS PROJECT (GROUND TO GRID) IS: 0.999913125 THE N.C. LAMBERT GRID BEARING LOCALIZED HORIZONTAL GROUND DISTANCE FROM "SUNOCO" TO L-STATION 09+80000 IS N 75° 03' 28.91" W 2.2979.321m ALL LINEAR DIMENSIONS ARE LOCALIZED HORIZONTAL DISTANCES VERTICAL DATUM USED IS MVD 29



PROJECT REFERENCE NO. U-2717		SHEET NO. EC-3/CONST.4
R/W SHEET NO.		
ROADWAY DESIGN ENGINEER	HYDRAULICS ENGINEER	
CONST. REV.		
R/W REV.		

NOTE: PLACE TEMPORARY ROCK SEDIMENT DAMS TYPE-B AND TEMPORARY ROCK SILT CHECKS TYPE-A AT DRAINAGE OUTLETS.

CLEARING AND GRUBBING EROSION CONTROL FOR CONSTRUCTION SHEET 4



SEE SHEET 5
MATCHLINE -L- STA 11+40

C & M INVESTMENTS OF HIGH POINT, INC. DB 4763 PG 645

C & M INVESTMENTS OF HIGH POINT, INC. DB 4763 PG 645

END CONST
-YI- STA 10+26.724

-L- POT Sta. 09+80
BEGIN STATE PROJECT U-2717

BEGIN CONST
-Y2- STA 11+44.527

BL-IPOT 5+00.000=
BY1- POT 5+00.000=
BY2- POT 6+80.668=
-L- STA 10+45.680(8.16mRT)

JAZ HOLDINGS, L.L.C.
DB 4530 PG 370

TRUSTEES OF HIGH POINT COLLEGE, INC.
DB 2220 PG 781

+15 -L- 16.8m(55.12')
+35 -L- 16.8m(55.12')
PROP RW -L- 21m(68.90')
+26.724 -YI- EXIST RW
+20 -L- 21.0m(68.')

-L- POT 10+54.875=
-YI- POT 10+09.000

+80 -L- EXIST RW
+00 -L- 13.2m(43.31') EXIST RW

-L- POT 10+54.825=
-Y2- POT 11+67.410

EXIST RW -L- 13.2m(43.31') CONC

10+69 -L- EX. RW
10+76.5 -L- EXIST R/W& 17.5m(57.41')

10+95 -L- 13.2m(43.31')& 21.5m(70.54')

11+09.5 -L- 13.2m(43.31')& 17.5m(57.41')

11+16 -L- 13.2m(43.31')& 17.5m(57.41')

12.2m

5.8m

11.6m TO FACE

7.3m TO FACE TO FACE

10.2m TO FACE

10.2m TO FACE

6.84m TO F

6.889m TO F

264

262

262