

PROJECT REFERENCE NO.	SHEET NO.
U-2717	EC-10/CONST. II
R/W SHEET NO.	
ROADWAY DESIGN ENGINEER	HYDRAULICS ENGINEER

**METRIC**

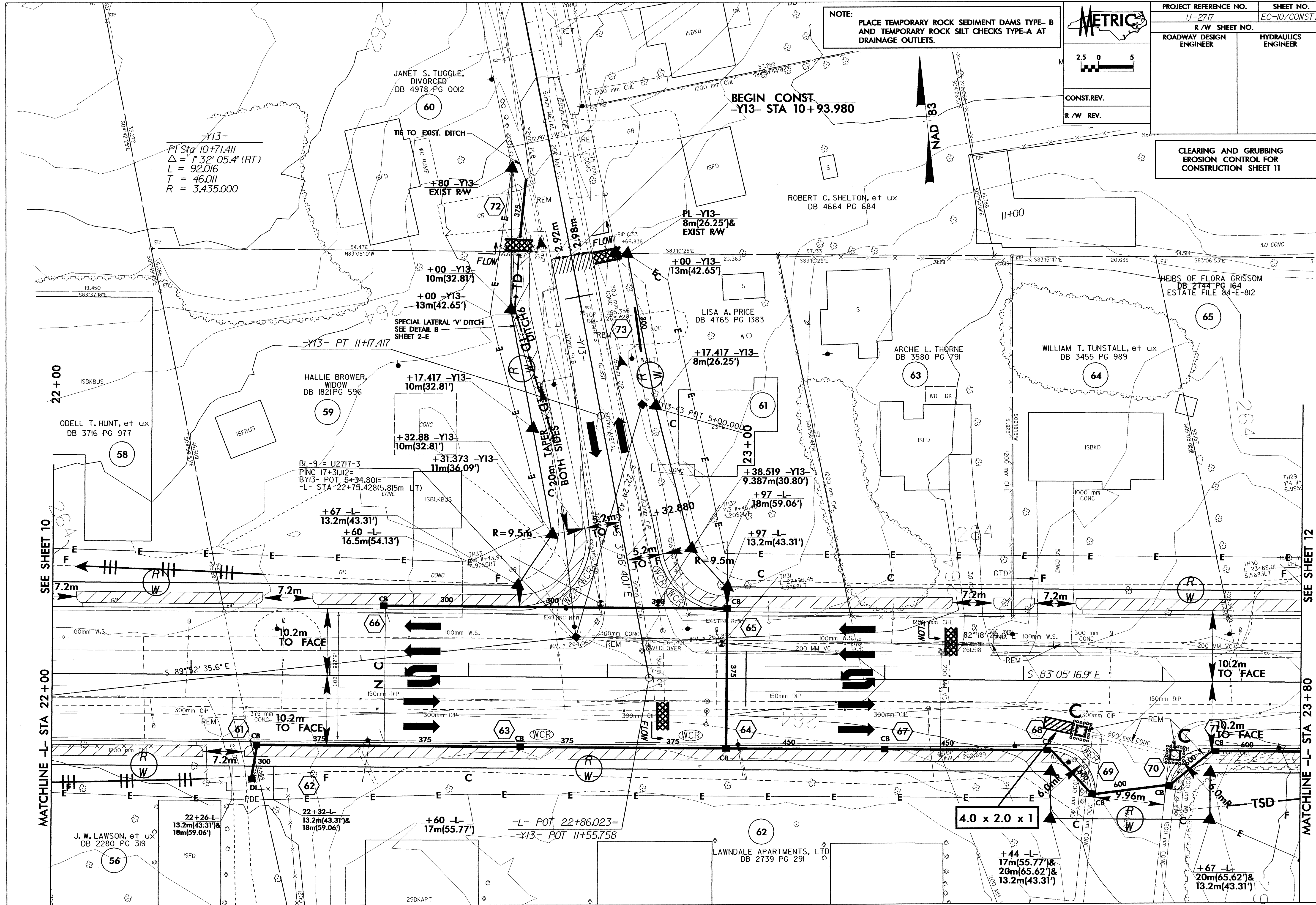
2.5 0 5

CONST. REV.

R/W REV.

**NOTE:**  
PLACE TEMPORARY ROCK SEDIMENT DAMS TYPE-B AND TEMPORARY ROCK SILT CHECKS TYPE-A AT DRAINAGE OUTLETS.

**CLEARING AND GRUBBING  
EROSION CONTROL FOR  
CONSTRUCTION SHEET 11**



SEE SHEET 10

MATCHLINE -L- STA 22+00

SEE SHEET 12

MATCHLINE -L- STA 23+80

-Y13-  
PI Sta 10+71.411  
 $\Delta = 1^{\circ} 32' 05.4''$  (RT)  
L = 92.016  
T = 46.011  
R = 3,435.000

**BEGIN CONST**  
-Y13- STA 10+93.980

NAD 83

-Y13- PT 11+17.417

C-20m TAPER ON BOTH SIDES

4.0 x 2.0 x 1

+67 -L-  
20m(65.62') &  
13.2m(43.31')

-L- POT 22+86.023 =  
-Y13- POT 11+55.758

+44 -L-  
17m(55.77') &  
20m(65.62') &  
13.2m(43.31')

+67 -L-  
13.2m(43.31')  
+60 -L-  
16.5m(54.13')

+38.519 -Y13-  
9.387m(30.80')  
+97 -L-  
18m(59.06')

+17.417 -Y13-  
10m(32.81')

+17.417 -Y13-  
8m(26.25')

+00 -Y13-  
10m(32.81')

+00 -Y13-  
13m(42.65')

+80 -Y13-  
EXIST RW

PL -Y13-  
8m(26.25') &  
EXIST RW

JANET S. TUGGLE,  
DIVORCED  
DB 4978 PG 0012

ROBERT C. SHELTON, et ux  
DB 4664 PG 684

LISA A. PRICE  
DB 4765 PG 1383

ARCHIE L. THORNE  
DB 3580 PG 791

WILLIAM T. TUNSTALL, et ux  
DB 3455 PG 989

ODELL T. HUNT, et ux  
DB 3716 PG 977

HALLIE BROWER,  
WIDOW  
DB 1821 PG 596

BL-9 = U2717-3  
PINC 17+31.112=  
BY13- POT 5+34.801=  
-L- STA 22+75.428(5.815m LT)

J. W. LAWSON, et ux  
DB 2280 PG 319

LAWDALE APARTMENTS, LTD  
DB 2739 PG 291