

PROJECT REFERENCE NO. U-2717	SHEET NO. EC-18/CONST.19
R/W SHEET NO.	
ROADWAY DESIGN ENGINEER	HYDRAULICS ENGINEER

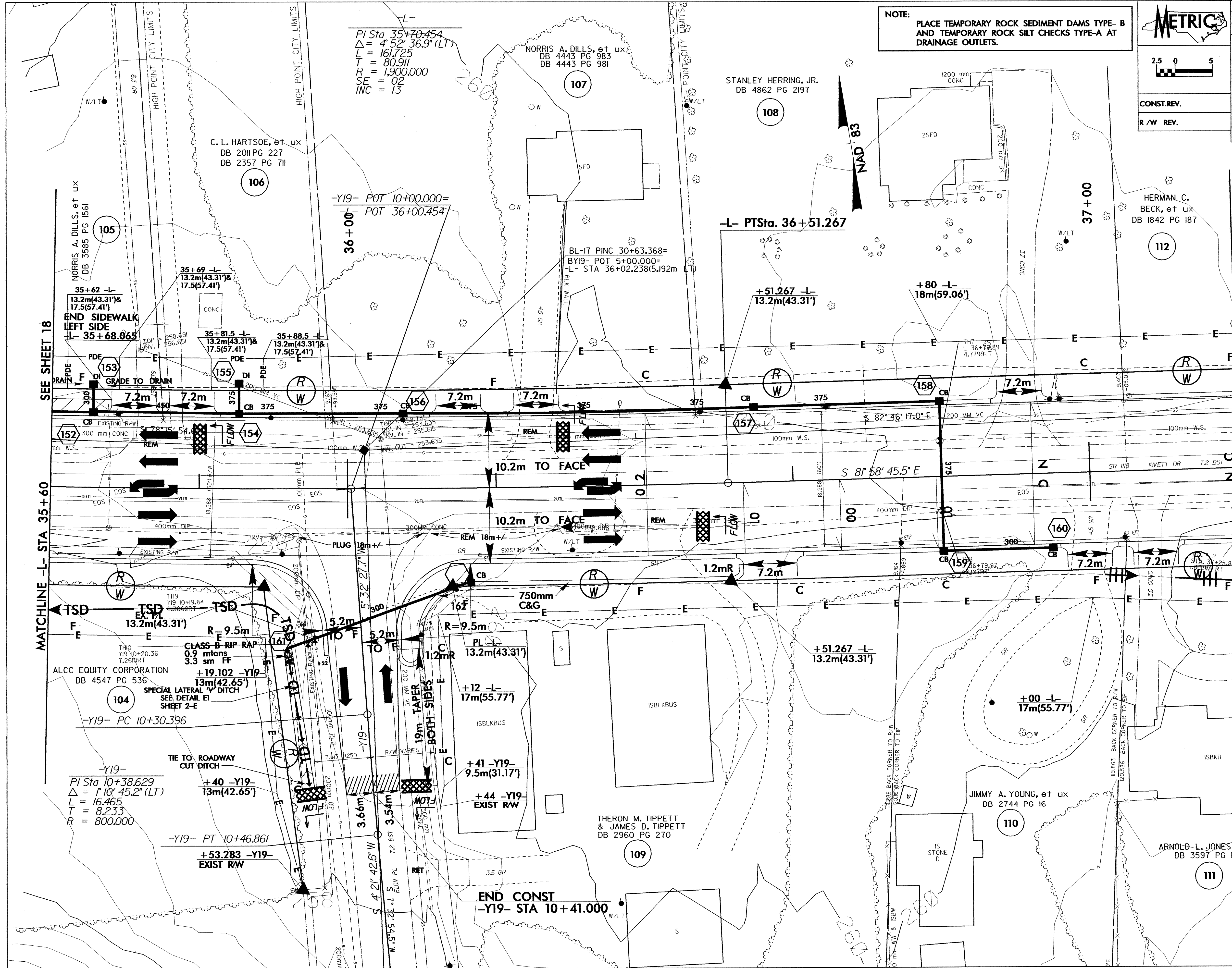
METRIC

2.5 0 5

CONST. REV.
R/W REV.

NOTE:
PLACE TEMPORARY ROCK SEDIMENT DAMS TYPE-B AND TEMPORARY ROCK SILT CHECKS TYPE-A AT DRAINAGE OUTLETS.

CLEARING AND GRUBBING
EROSION CONTROL FOR
CONSTRUCTION SHEET 19



L-
PI Sta 35+70.454
 $\Delta = 4' 52'' 36.9''$ (LT)
L = 161.725
T = 80.911
R = 1,900.000
SE = 02
INC = 13

-Y19- POT 10+00.000=
-L- POT 36+00.454

BL-17 PINC 30+63.368=
BY19- POT 5+00.000=
-L- STA 36+02.238(5.192m LT)

END SIDEWALK
LEFT SIDE
-L- 35+68.065

SEE SHEET 18

SEE SHEET 20

MATCHLINE -L- STA 35+60

MATCHLINE -L- STA 37+20

TSD
EX-17
13.2m(43.31')

CLASS B RIP RAP
0.9 mtons
3.3 sm FF
+19.102 -Y19
13m(42.65')

-Y19-
PI Sta 10+38.629
 $\Delta = 1' 10'' 45.2''$ (LT)
L = 16.465
T = 8.233
R = 800.000

+40 -Y19-
13m(42.65')

-Y19- PT 10+46.861
+53.283 -Y19-
EXIST R/W

END CONST
-Y19- STA 10+41.000

ALCC EQUITY CORPORATION
DB 4547 PG 536

SPECIAL LATERAL DITCH
SEE DETAIL E1
SHEET 2-E

-Y19- PC 10+30.396

TIE TO ROADWAY
CUT DITCH

-Y19- PT 10+46.861

+53.283 -Y19-
EXIST R/W

PL -L-
13.2m(43.31')

+12 -L-
17m(55.77')

+41 -Y19-
9.5m(31.17')

+44 -Y19-
EXIST R/W

19m TAPER
BOTH SIDES

3.66m
4.21' 42.6" W
3.54m

RET

3.5 GR

END CONST
-Y19- STA 10+41.000

ALCC EQUITY CORPORATION
DB 4547 PG 536

SPECIAL LATERAL DITCH
SEE DETAIL E1
SHEET 2-E

-Y19- PC 10+30.396

TIE TO ROADWAY
CUT DITCH

-Y19- PT 10+46.861

+53.283 -Y19-
EXIST R/W

PL -L-
13.2m(43.31')

+12 -L-
17m(55.77')

+41 -Y19-
9.5m(31.17')

+44 -Y19-
EXIST R/W

19m TAPER
BOTH SIDES

3.66m
4.21' 42.6" W
3.54m

RET

3.5 GR

END CONST
-Y19- STA 10+41.000

ALCC EQUITY CORPORATION
DB 4547 PG 536

SPECIAL LATERAL DITCH
SEE DETAIL E1
SHEET 2-E

-Y19- PC 10+30.396

TIE TO ROADWAY
CUT DITCH

-Y19- PT 10+46.861

+53.283 -Y19-
EXIST R/W

PL -L-
13.2m(43.31')

+12 -L-
17m(55.77')

+41 -Y19-
9.5m(31.17')

+44 -Y19-
EXIST R/W

19m TAPER
BOTH SIDES

3.66m
4.21' 42.6" W
3.54m

RET

3.5 GR

END CONST
-Y19- STA 10+41.000