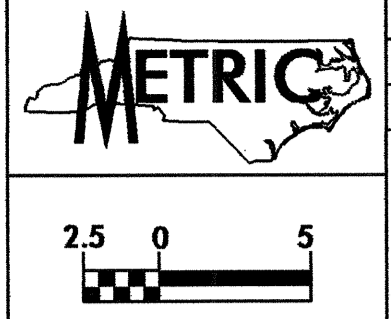
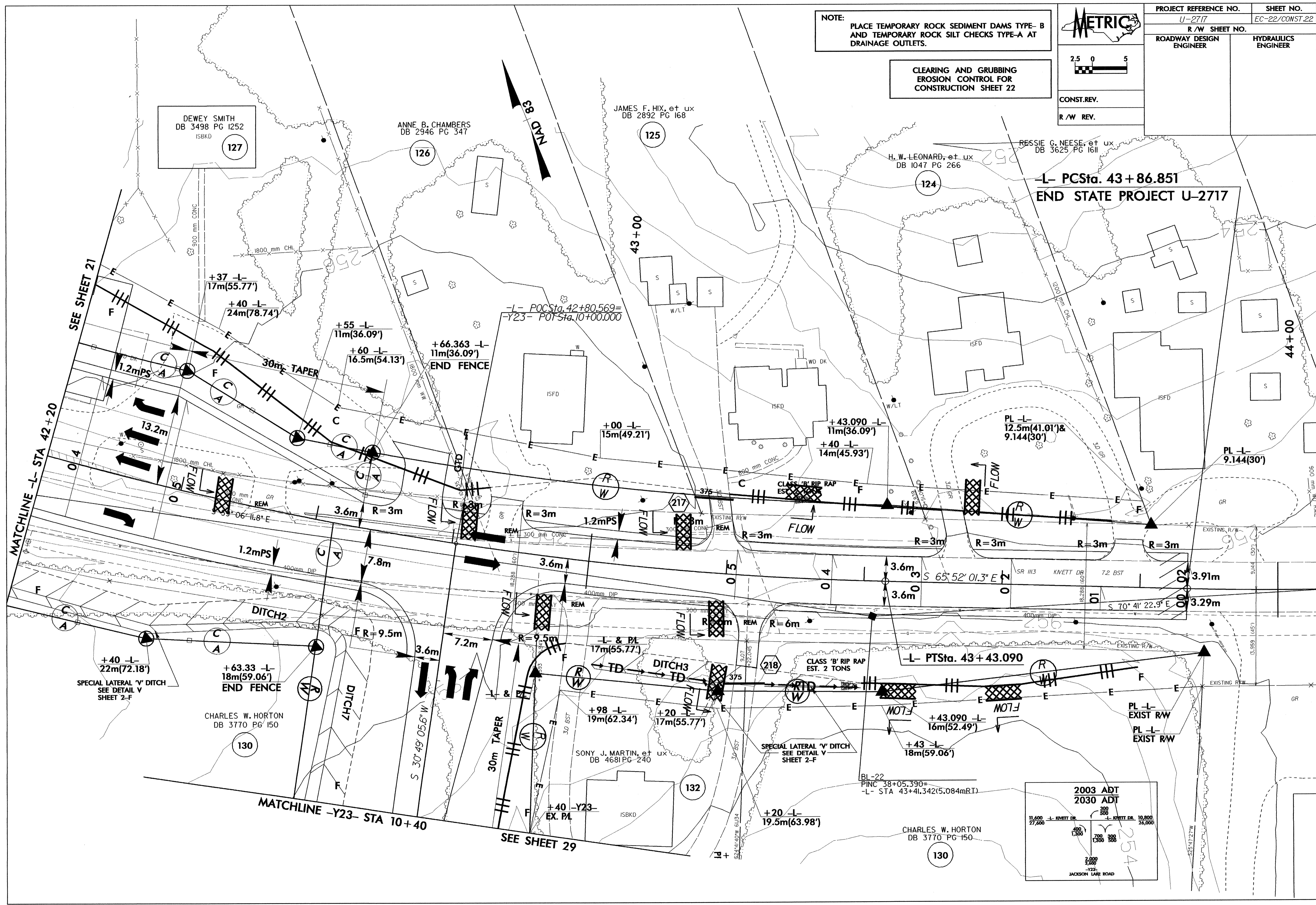


NOTE:
PLACE TEMPORARY ROCK SEDIMENT DAMS TYPE-B
AND TEMPORARY ROCK SILT CHECKS TYPE-A AT
DRAINAGE OUTLETS.



PROJECT REFERENCE NO. U-2717	SHEET NO. EC-22/CONST.22
R/W SHEET NO.	
ROADWAY DESIGN ENGINEER	HYDRAULICS ENGINEER
CONST.REV.	
R/W REV.	

CLEARING AND GRUBBING
EROSION CONTROL FOR
CONSTRUCTION SHEET 22



DEWEY SMITH
DB 3498 PG 1252
ISBKD
127

ANNE B. CHAMBERS
DB 2946 PG 347
126

JAMES F. HIX, et ux
DB 2892 PG 168
125

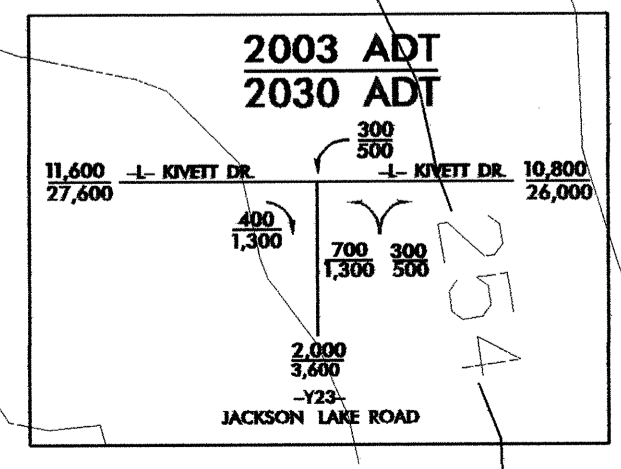
H. W. LEONARD, et ux
DB 1047 PG 266
124

RESSIE G. NEESE, et ux
DB 3625 PG 1611

CHARLES W. HORTON
DB 3770 PG 150
130

SONY J. MARTIN, et ux
DB 4681 PG 240
132

CHARLES W. HORTON
DB 3770 PG 150
130



MATCHLINE -L- STA 42+20
SEE SHEET 21

MATCHLINE -Y23- STA 10+40
SEE SHEET 29

-L- PCSta. 43+86.851
END STATE PROJECT U-2717

SPECIAL LATERAL 'V' DITCH
SEE DETAIL V
SHEET 2-F

SPECIAL LATERAL 'V' DITCH
SEE DETAIL V
SHEET 2-F

BL-22
PINC 38+05.390=
-L- STA 43+41.342(5.084mRT)

PL -L-
EXIST RW

PL -L-
EXIST RW

2003 ADT
2030 ADT

11,600
27,600
400
1,300
700
1,300
300
500
2,000
5,000
-Y23-
JACKSON LAKE ROAD