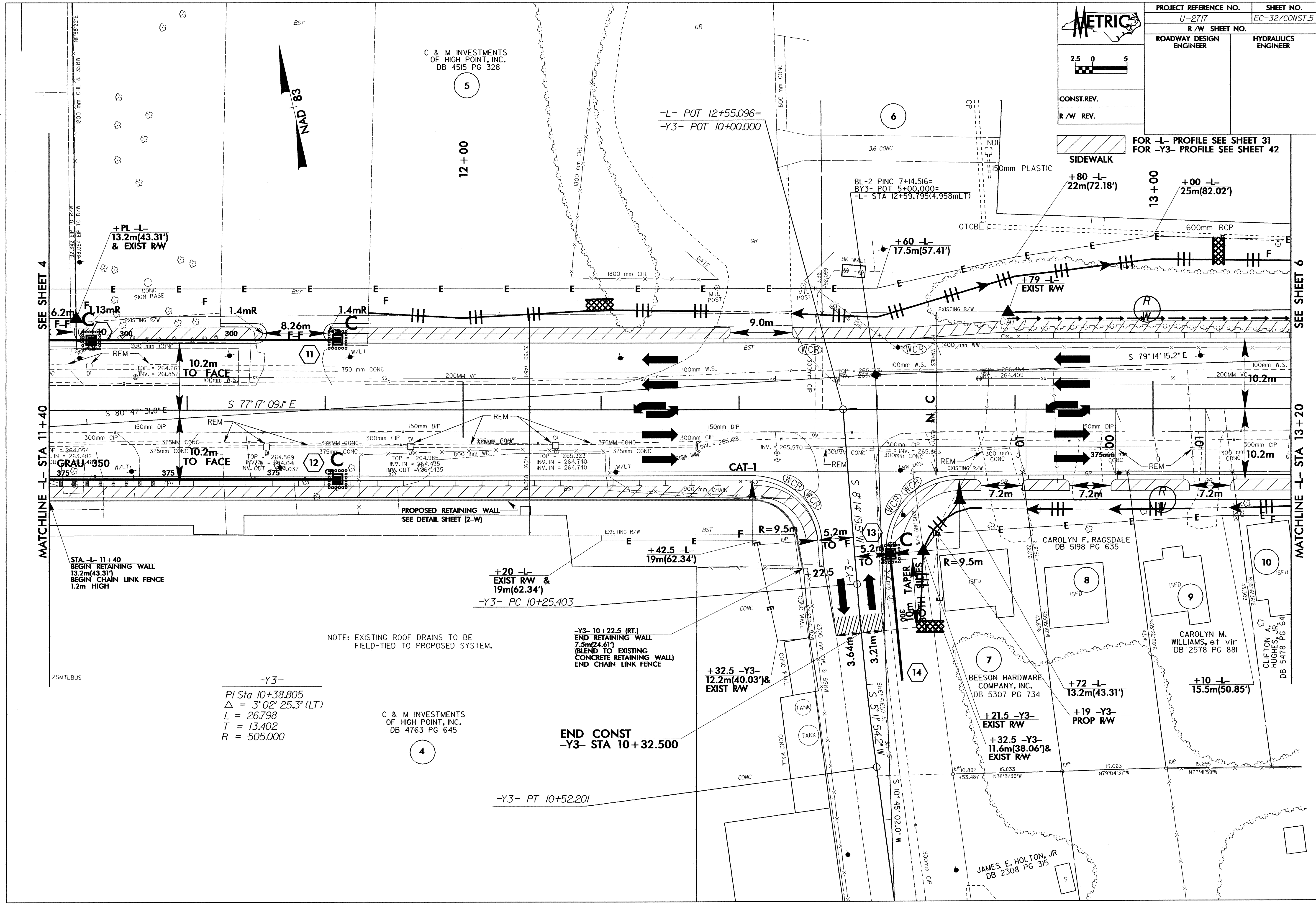


PROJECT REFERENCE NO.	SHEET NO.
U-2717	EC-32/CONST.5
R/W SHEET NO.	
ROADWAY DESIGN ENGINEER	HYDRAULICS ENGINEER

FOR -L- PROFILE SEE SHEET 31
FOR -Y3- PROFILE SEE SHEET 42



SEE SHEET 4

MATCHLINE -L- STA 11+40

SEE SHEET 6

MATCHLINE -L- STA 13+20

C & M INVESTMENTS OF HIGH POINT, INC. DB 4515 PG 328

C & M INVESTMENTS OF HIGH POINT, INC. DB 4763 PG 645

-Y3-
PI Sta 10+38.805
Δ = 3° 02' 25.3" (LT)
L = 26.798
T = 13.402
R = 505.000

NOTE: EXISTING ROOF DRAINS TO BE FIELD-TIED TO PROPOSED SYSTEM.

END CONST -Y3- STA 10+32.500

-Y3- PT 10+52.201

STA -L- 11+40
BEGIN RETAINING WALL
13.2m(43.31')
BEGIN CHAIN LINK FENCE
1.2m HIGH

+20 -L-
EXIST R/W &
19m(62.34')
-Y3- PC 10+25.403

+32.5 -Y3-
12.2m(40.03') &
EXIST R/W

+21.5 -Y3-
EXIST R/W

+32.5 -Y3-
11.6m(38.06') &
EXIST R/W

+72 -L-
13.2m(43.31')

+19 -Y3-
PROP R/W

+10 -L-
15.5m(50.85')

25MTLBUS

+PL -L-
13.2m(43.31')
& EXIST R/W

BL-2 PINC 7+14.516=
BY3- POT 5+00.000=
-L- STA 12+59.795(4.958mLT)

-L- POT 12+55.096=
-Y3- POT 10+00.000

12+00

13+00

13+00

SEE SHEET 6

MATCHLINE -L- STA 13+20

4

6

10

7

8

9

SEE SHEET 4

MATCHLINE -L- STA 11+40

SEE SHEET 6

MATCHLINE -L- STA 13+20