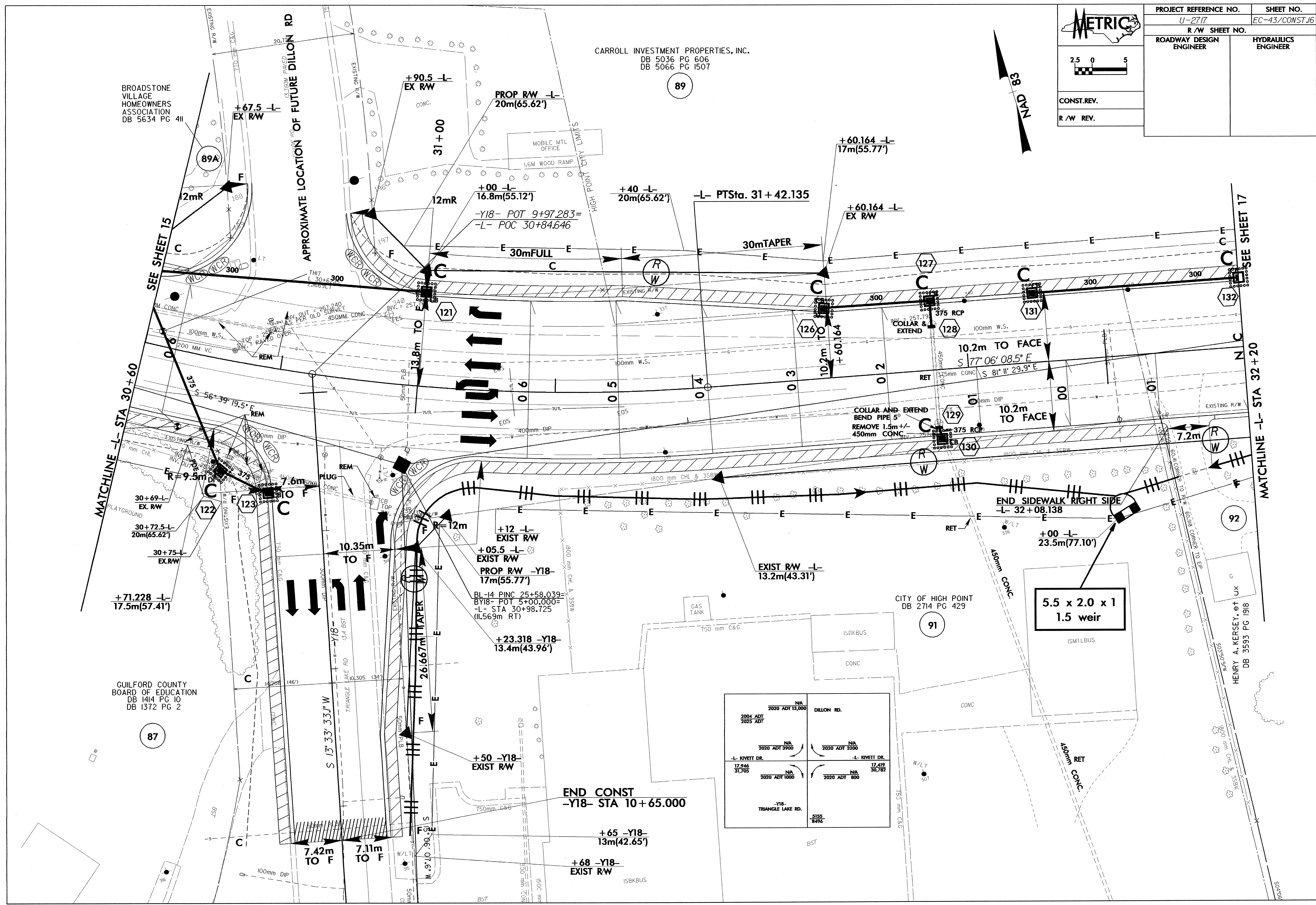
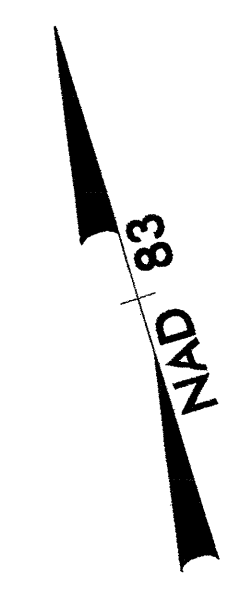


**METRIC**

CONST. REV.  
R/W REV.

PROJECT REFERENCE NO. U-2717	SHEET NO. EC-43/CONST.16
R/W SHEET NO.	HYDRAULICS ENGINEER
ROADWAY DESIGN ENGINEER	

CARROLL INVESTMENT PROPERTIES, INC.  
DB 5036 PG 606  
DB 5066 PG 1507



BROADSTONE VILLAGE HOMEOWNERS ASSOCIATION  
DB 5634 PG 411

GUILFORD COUNTY BOARD OF EDUCATION  
DB 1414 PG 10  
DB 1372 PG 2

MATCHLINE -L- STA 30+60

MATCHLINE -L- STA 32+20

2004 ADT 2025 ADT	N/A 2020 ADT 13,000	DILLON RD.	N/A 2020 ADT 3200
17,946 31,705	2020 ADT 5900	-L- KIVETT DR.	17,419 30,782
	2020 ADT 1000	-L- KIVETT DR.	
		-Y18- TRIANGLE LAKE RD.	5155 8496

END CONST  
-Y18- STA 10+65.000

5.5 x 2.0 x 1  
1.5 weir

87

89

91

92

+67.5 -L- EX RW

+90.5 -L- EX RW

PROP RW -L- 20m(65.62')

+40 -L- 20m(65.62')

+60.164 -L- 17m(55.77')

+60.164 -L- EX RW

+00 -L- 16.8m(55.12')

-Y18- POT 9+97.283=  
-L- POC 30+84.646

-L- PTSta. 31+42.135

+12 -L- EXIST RW

+05.5 -L- EXIST RW

PROP RW -Y18- 17m(55.77')

BL-14 PINC 25+58.039=  
BY18- POT 5+00.000=  
-L- STA 30+98.725  
(IL56.9m RT)

+23.318 -Y18- 13.4m(43.96')

+50 -Y18- EXIST RW

+65 -Y18- 13m(42.65')

+68 -Y18- EXIST RW

+71.228 -L- 17.5m(57.41')

END SIDEWALK RIGHT SIDE  
-L- 32+08.138

+00 -L- 23.5m(77.10')

+50 -Y18- EXIST RW

+65 -Y18- 13m(42.65')

+68 -Y18- EXIST RW

+71.228 -L- 17.5m(57.41')

END SIDEWALK RIGHT SIDE  
-L- 32+08.138

+00 -L- 23.5m(77.10')

+50 -Y18- EXIST RW

+65 -Y18- 13m(42.65')

+68 -Y18- EXIST RW

+71.228 -L- 17.5m(57.41')

END SIDEWALK RIGHT SIDE  
-L- 32+08.138

+00 -L- 23.5m(77.10')

+50 -Y18- EXIST RW

+65 -Y18- 13m(42.65')

+68 -Y18- EXIST RW

+71.228 -L- 17.5m(57.41')

END SIDEWALK RIGHT SIDE  
-L- 32+08.138

+00 -L- 23.5m(77.10')

+50 -Y18- EXIST RW

+65 -Y18- 13m(42.65')

+68 -Y18- EXIST RW

+71.228 -L- 17.5m(57.41')

END SIDEWALK RIGHT SIDE  
-L- 32+08.138

+00 -L- 23.5m(77.10')

+50 -Y18- EXIST RW

+65 -Y18- 13m(42.65')

+68 -Y18- EXIST RW

+71.228 -L- 17.5m(57.41')

END SIDEWALK RIGHT SIDE  
-L- 32+08.138

+00 -L- 23.5m(77.10')

+50 -Y18- EXIST RW

+65 -Y18- 13m(42.65')

+68 -Y18- EXIST RW

+71.228 -L- 17.5m(57.41')

END SIDEWALK RIGHT SIDE  
-L- 32+08.138

+00 -L- 23.5m(77.10')

+50 -Y18- EXIST RW

+65 -Y18- 13m(42.65')

+68 -Y18- EXIST RW

+71.228 -L- 17.5m(57.41')

END SIDEWALK RIGHT SIDE  
-L- 32+08.138

+00 -L- 23.5m(77.10')

+50 -Y18- EXIST RW

+65 -Y18- 13m(42.65')

+68 -Y18- EXIST RW

+71.228 -L- 17.5m(57.41')

END SIDEWALK RIGHT SIDE  
-L- 32+08.138

+00 -L- 23.5m(77.10')

+50 -Y18- EXIST RW

+65 -Y18- 13m(42.65')

+68 -Y18- EXIST RW

+71.228 -L- 17.5m(57.41')

END SIDEWALK RIGHT SIDE  
-L- 32+08.138

+00 -L- 23.5m(77.10')

+50 -Y18- EXIST RW

+65 -Y18- 13m(42.65')

+68 -Y18- EXIST RW

+71.228 -L- 17.5m(57.41')

END SIDEWALK RIGHT SIDE  
-L- 32+08.138

+00 -L- 23.5m(77.10')

+50 -Y18- EXIST RW

+65 -Y18- 13m(42.65')

+68 -Y18- EXIST RW

+71.228 -L- 17.5m(57.41')

END SIDEWALK RIGHT SIDE  
-L- 32+08.138

+00 -L- 23.5m(77.10')

+50 -Y18- EXIST RW

+65 -Y18- 13m(42.65')

+68 -Y18- EXIST RW

+71.228 -L- 17.5m(57.41')

END SIDEWALK RIGHT SIDE  
-L- 32+08.138

+00 -L- 23.5m(77.10')

+50 -Y18- EXIST RW

+65 -Y18- 13m(42.65')

+68 -Y18- EXIST RW

+71.228 -L- 17.5m(57.41')

END SIDEWALK RIGHT SIDE  
-L- 32+08.138

+00 -L- 23.5m(77.10')

+50 -Y18- EXIST RW

+65 -Y18- 13m(42.65')

+68 -Y18- EXIST RW

+71.228 -L- 17.5m(57.41')

END SIDEWALK RIGHT SIDE  
-L- 32+08.138

+00 -L- 23.5m(77.10')

+50 -Y18- EXIST RW

+65 -Y18- 13m(42.65')

+68 -Y18- EXIST RW

+71.228 -L- 17.5m(57.41')

END SIDEWALK RIGHT SIDE  
-L- 32+08.138

+00 -L- 23.5m(77.10')

+50 -Y18- EXIST RW

+65 -Y18- 13m(42.65')

+68 -Y18- EXIST RW

+71.228 -L- 17.5m(57.41')

END SIDEWALK RIGHT SIDE  
-L- 32+08.138

+00 -L- 23.5m(77.10')

+50 -Y18- EXIST RW

+65 -Y18- 13m(42.65')

+68 -Y18- EXIST RW

+71.228 -L- 17.5m(57.41')

END SIDEWALK RIGHT SIDE  
-L- 32+08.138

+00 -L- 23.5m(77.10')

+50 -Y18- EXIST RW

+65 -Y18- 13m(42.65')

+68 -Y18- EXIST RW

+71.228 -L- 17.5m(57.41')

END SIDEWALK RIGHT SIDE  
-L- 32+08.138

+00 -L- 23.5m(77.10')

+50 -Y18- EXIST RW

+65 -Y18- 13m(42.65')

+68 -Y18- EXIST RW

+71.228 -L- 17.5m(57.41')

END SIDEWALK RIGHT SIDE  
-L- 32+08.138

+00 -L- 23.5m(77.10')

+50 -Y18- EXIST RW

+65 -Y18- 13m(42.65')

+68 -Y18- EXIST RW

+71.228 -L- 17.5m(57.41')

END SIDEWALK RIGHT SIDE  
-L- 32+08.138

+00 -L- 23.5m(77.10')

+50 -Y18- EXIST RW

+65 -Y18- 13m(42.65')

+68 -Y18- EXIST RW

+71.228 -L- 17.5m(57.41')

END SIDEWALK RIGHT SIDE  
-L- 32+08.138

+00 -L- 23.5m(77.10')

+50 -Y18- EXIST RW

+65 -Y18- 13m(42.65')

+68 -Y18- EXIST RW

+71.228 -L- 17.5m(57.41')

END SIDEWALK RIGHT SIDE  
-L- 32+08.138

+00 -L- 23.5m(77.10')

+50 -Y18- EXIST RW

+65 -Y18- 13m(42.65')

+68 -Y18- EXIST RW

+71.228 -L- 17.5m(57.41')

END SIDEWALK RIGHT SIDE  
-L- 32+08.138

+00 -L- 23.5m(77.10')

+50 -Y18- EXIST RW

+65 -Y18- 13m(42.65')

+68 -Y18- EXIST RW

+71.228 -L- 17.5m(57.41')

END SIDEWALK RIGHT SIDE  
-L- 32+08.138

+00 -L- 23.5m(77.10')

+50 -Y18- EXIST RW

+65 -Y18- 13m(42.65')

+68 -Y18- EXIST RW

+71.228 -L- 17.5m(57.41')

END SIDEWALK RIGHT SIDE  
-L- 32+08.138

+00 -L- 23.5m(77.10')

+50 -Y18- EXIST RW

+65 -Y18- 13m(42.65')

+68 -Y18- EXIST RW

+71.228 -L- 17.5m(57.41')

END SIDEWALK RIGHT SIDE  
-L- 32+08.138

+00 -L- 23.5m(77.10')

+50 -Y18- EXIST RW

+65 -Y18- 13m(42.65')

+68 -Y18- EXIST RW

+71.228 -L- 17.5m(57.41')

END SIDEWALK RIGHT SIDE  
-L- 32+08.138

+00 -L- 23.5m(77.10')

+50 -Y18- EXIST RW

+65 -Y18- 13m(42.65')

+68 -Y18- EXIST RW

+71.228 -L- 17.5m(57.41')

END SIDEWALK RIGHT SIDE  
-L- 32+08.138

+00 -L- 23.5m(77.10')

+50 -Y18- EXIST RW

+65 -Y18- 13m(42.65')

+68 -Y18- EXIST RW

+71.228 -L- 17.5m(57.41')

END SIDEWALK RIGHT SIDE  
-L- 32+08.138

+00 -L- 23.5m(77.10')

+50 -Y18- EXIST RW

+65 -Y18- 13m(42.65')

+68 -Y18- EXIST RW

+71.228 -L- 17.5m(57.41')

END SIDEWALK RIGHT SIDE  
-L- 32+08.138

+00 -L- 23.5m(77.10')

+50 -Y18- EXIST RW

+65 -Y18- 13m(42.65')

+68 -Y18- EXIST RW

+71.228 -L- 17.5m(57.41')

END SIDEWALK RIGHT SIDE  
-L- 32+08.138

+00 -L- 23.5m(77.10')

+50 -Y18- EXIST RW

+65 -Y18- 13m(42.65')

+68 -Y18- EXIST RW

+71.