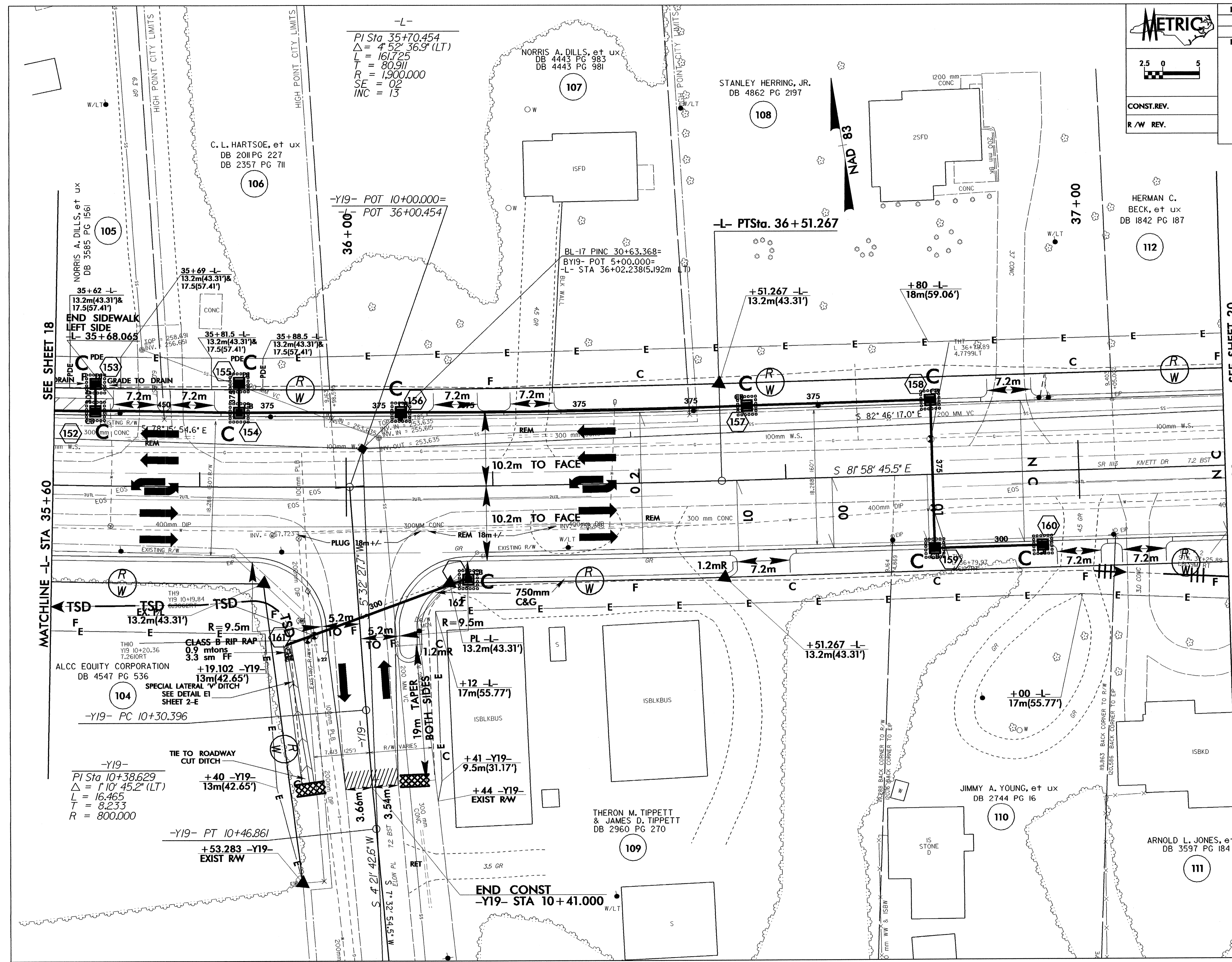


**METRIC**

CONST. REV.  
R/W REV.

PROJECT REFERENCE NO. U-2717	SHEET NO. EC-46/CONST 19
R/W SHEET NO.	HYDRAULICS ENGINEER
ROADWAY DESIGN ENGINEER	



-L-  
 PI Sta 35+70.454  
 $\Delta = 4^{\circ} 52' 36.9''$  (LT)  
 L = 161.725  
 T = 80.911  
 SE = 1,900.000  
 INC = 13

-Y19- POT 10+00.000=  
 -L- POT 36+00.454

NORRIS A. DILLS, et ux  
 DB 4443 PG 983  
 DB 4443 PG 981

STANLEY HERRING, JR.  
 DB 4862 PG 2197

C. L. HARTSOE, et ux  
 DB 2011 PG 227  
 DB 2357 PG 711

HERMAN C. BECK, et ux  
 DB 1842 PG 187

NORRIS A. DILLS, et ux  
 DB 3585 PG 1561

END SIDEWALK LEFT SIDE  
 -L- 35+68.068

BL-17 PINC 30+63.368=  
 BY19- POT 5+00.000=  
 -L- STA 36+02.238(5.192m L1)

+51.267 -L-  
 13.2m(43.31')

+80 -L-  
 18m(59.06')

SEE SHEET 18

SEE SHEET 20

MATCHLINE -L- STA 35+60

MATCHLINE -L- STA 37+20

ALCC EQUITY CORPORATION  
 DB 4547 PG 536

-Y19-  
 PI Sta 10+38.629  
 $\Delta = 1^{\circ} 10' 45.2''$  (LT)  
 L = 16.465  
 T = 8.233  
 R = 800.000

+40 -Y19-  
 13m(42.65')

-Y19- PT 10+46.861  
 +53.283 -Y19-  
 EXIST RW

END CONST  
 -Y19- STA 10+41.000

THERON M. TIPPETT & JAMES D. TIPPETT  
 DB 2960 PG 270

JIMMY A. YOUNG, et ux  
 DB 2744 PG 16

ARNOLD L. JONES, et ux  
 DB 3597 PG 184