

METRIC

CONST. REV.
R/W REV.

PROJECT REFERENCE NO. U-2717	SHEET NO. EC-47/CONST.20
R/W SHEET NO.	HYDRAULICS ENGINEER
ROADWAY DESIGN ENGINEER	

BEGIN CONST
-Y20- STA 11+00.00

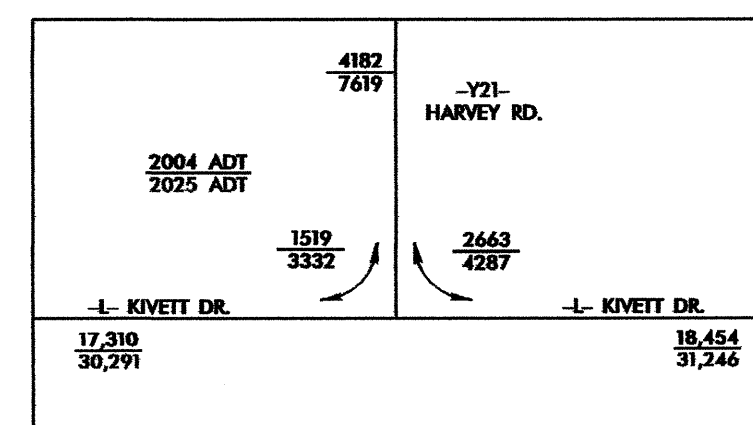
-Y20- PC 10+60.705

-L-
PI Sta 38+66.750
 $\Delta = 30^\circ 39' 55.9''$ (RT)
L = 133.804
T = 68.546
R = 250.000
SE = 06
INC = 13

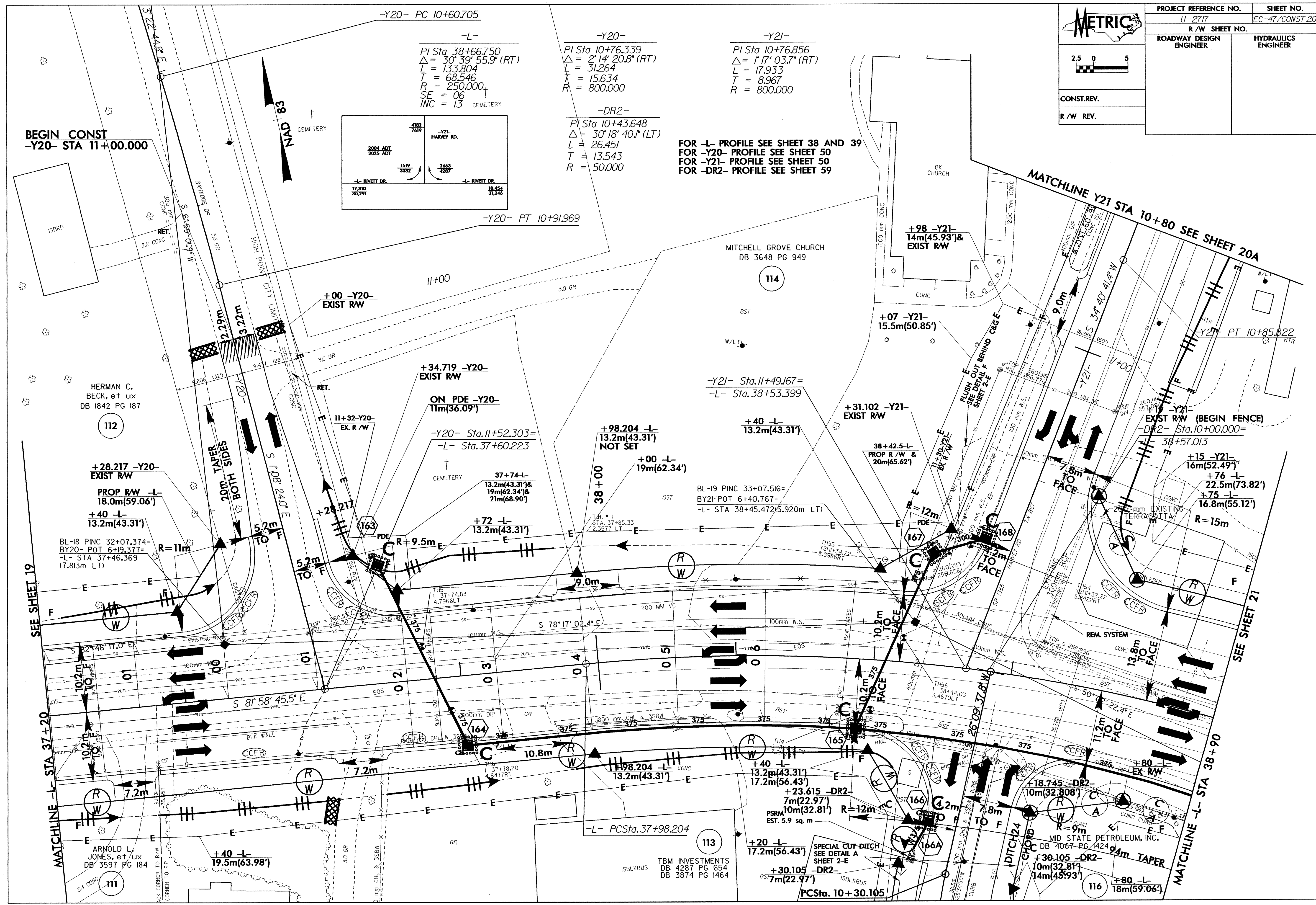
-Y20-
PI Sta 10+76.339
 $\Delta = 2^\circ 14' 20.8''$ (RT)
L = 31.264
T = 15.634
R = 800.000

-Y21-
PI Sta 10+76.856
 $\Delta = 1^\circ 17' 03.7''$ (RT)
L = 17.933
T = 8.967
R = 800.000

-DR2-
PI Sta 10+43.648
 $\Delta = 30^\circ 18' 40.1''$ (LT)
L = 26.451
T = 13.543
R = 50.000



FOR -L- PROFILE SEE SHEET 38 AND 39
FOR -Y20- PROFILE SEE SHEET 50
FOR -Y21- PROFILE SEE SHEET 50
FOR -DR2- PROFILE SEE SHEET 59



SEE SHEET 19

MATCHLINE -L- STA 37+20

MATCHLINE SEE SHEET 21

SEE SHEET 21

MATCHLINE Y21 STA 10+80 SEE SHEET 20A