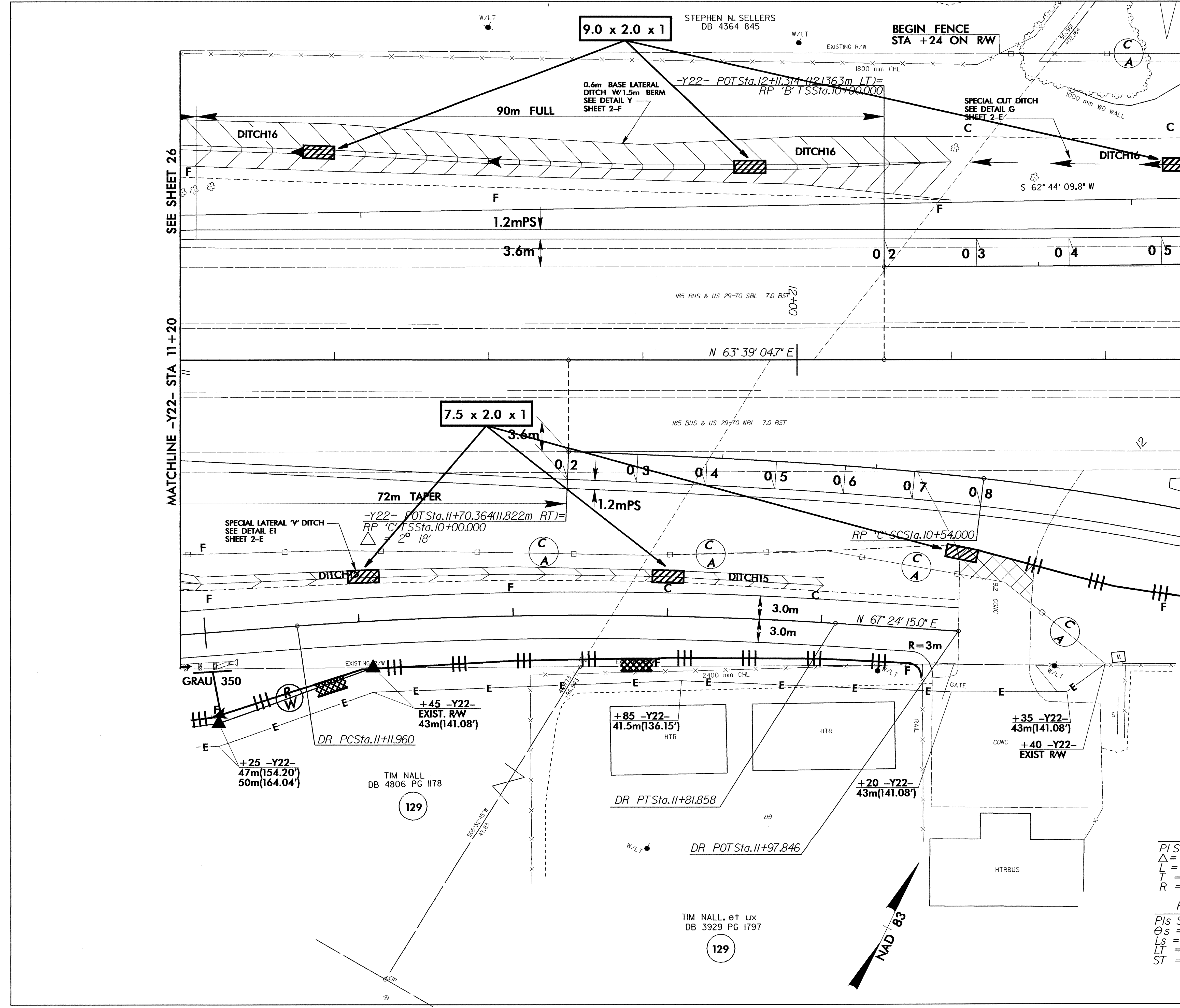


METRIC

CONST. REV.
R/W REV.

PROJECT REFERENCE NO. U-2717	SHEET NO. EC-55/CONST.27
R/W SHEET NO.	
ROADWAY DESIGN ENGINEER	HYDRAULICS ENGINEER



SEE SHEET 26

MATCHLINE -Y22- STA 11+20

SEE SHEET 21

MATCHLINE -Y22- STA 12+50

-DR-
 PI Sta 11+46.966
 $\Delta = 8^{\circ} 00' 34.5''$ (RT)
 $L = 69.897$
 $T = 35.005$
 $R = 500.000$

RAMP 'C'
 PIs Sta 10+36.011
 $\theta_s = 4^{\circ} 25' 11.9''$
 $L_s = 54.000$
 $LT = 36.011$
 $ST = 18.010$

RAMP 'B'
 PIs Sta 10+48.013
 $\theta_s = 4^{\circ} 07' 31.1''$
 $L_s = 72.000$
 $LT = 48.013$
 $ST = 24.012$

STEPHEN N. SELLERS
DB 4364 845

TIM NALL
DB 4806 PG 1178

TIM NALL, et ux
DB 3929 PG 1797

NAD 83